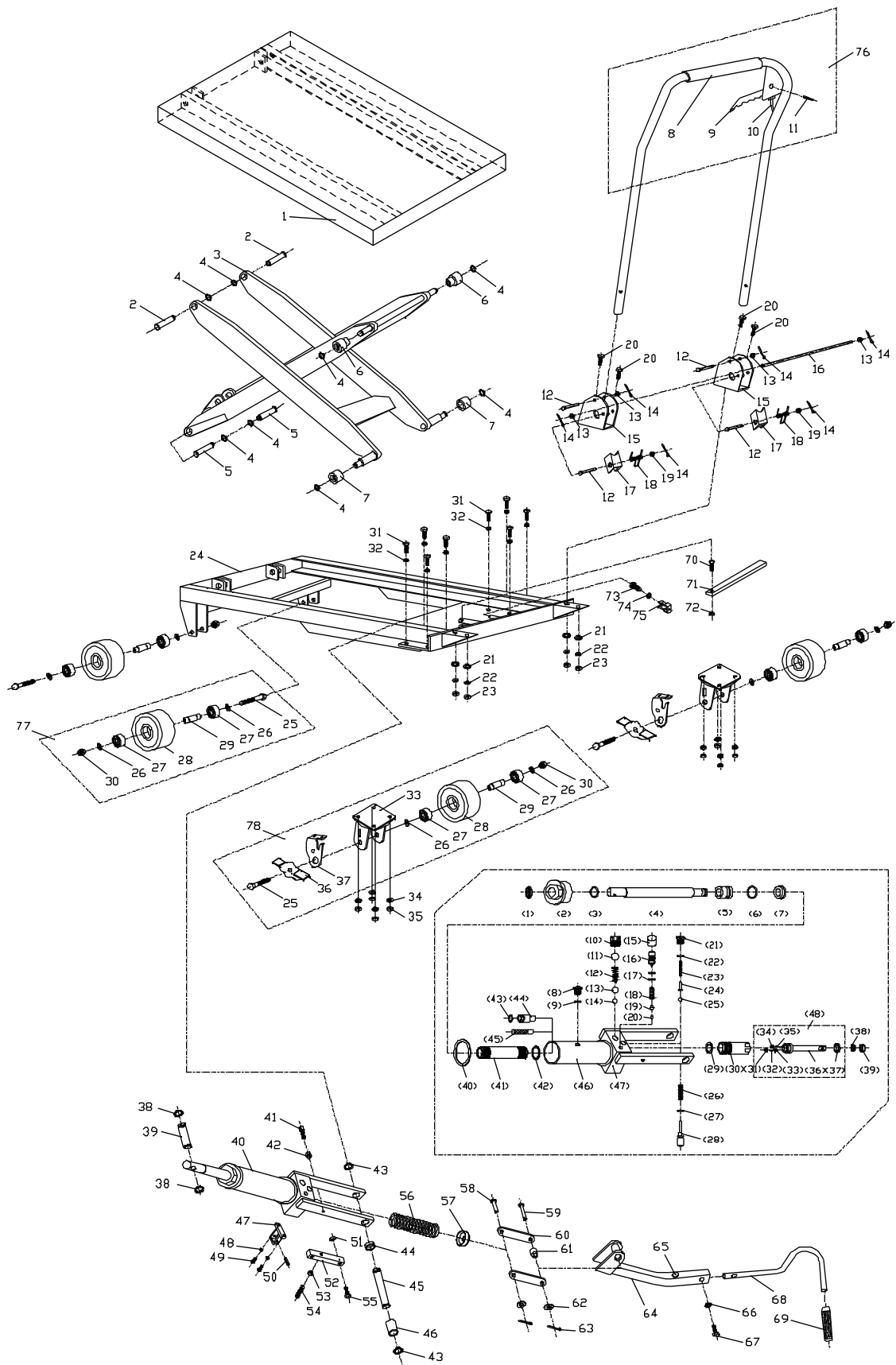


Parts Breakdown for SLT-660F Scissor Lift Table



Parts List for SLT-660F Scissor Lift Table

Index No.	Part No.	Description	Size	Qty
1	SLC660F-01	Table		1
2	SLT660F-06	Link Shaft		2
3	SLC660F-02	Link Assembly		1
4	SLC660F-03	C-Ring	Ø 16 mm	8
5	SLT660FH-05	Link Shaft		2
6	SLC660F-04	Roller Guide		2
7	SLT660FH-07	Roller Guide		2
8	SLT660FH-08	Handle		1
9	SLT660FH-09	Release Lever		1
10	SLT660FH-10	Cable		1
11	SLT660FH-11	Spring Pin	Ø 6 x 28 mm	1
12	SLT660FH-12	Lock Pin		4
13	SLT660F-66	Flat Washer	Ø 8 mm	4
14	SLT660FH-14	Split Pin	Ø 3 x 20 mm	6
15	SLC660F-09	Handle Bracket		2
16	SLT660FH-16	Shaft		1
17	SLC660F-15	Handle Support		2
18	SLC660F-16	Spring		2
19	SLT660FH-66	Washer	Ø 8 mm	2
20	SLT660FH-20	Hex Cap Screw	M8 x 20	4
21	SLT660F-66	Flat Washer	Ø 8 mm	4
22	SLT660F-22	Spring Washer	Ø 8 mm	4
23	SLT660FH-23	Nut	M8	4
24	SLT660FH-24	Frame		1
25	SLT660FH-25	Hex Cap Screw	M12 x 95	4
26	SLT660FH-26	Washer	Ø 12 mm	8
27	BB-6203ZZ	Ball Bearing	6203ZZ	8
28	SLT660FH-28	Wheel	Ø 5"	4
29	SLT660FH-29	Bushing		4
30	TS-2342121	Lock Nut	M12	4
31	TS-1490031	Hex Cap Screw	M8 x 20	8
32	TS-1550061	Flat Washer	Ø 8 mm	1
33	SLT660FH-33	Swivel Wheel Holder		2
34	TS-1550061	Flat Washer	Ø 8 mm	8
35	TS-1541031	Lock Nut	M8	8
36	SLT660FH-36	Brake Plate		2
37	SLT660FH-37	Stop Support		2
38	SLT660FH-38	C-Ring	Ø 18 mm	2
39	SLT660FH-39	Shaft		1
40	SLT660FH-40	Hydraulic Pump Assembly		1
[1]	SLT660F-36-1	Oil Seal*	DHS30	1
[2]	SLT660F-30-2	Top Nut		1
[3]	SLT660F-36-3	O-Ring*	Ø 36x3.5 mm	1
[4]	SLT660F-36-4	Lift Piston		1
[5]	SLT660F-36-5	Piston Bushing		1
[6]	SLT660F-36-6	O-Ring*	Ø 40 x 3.5 mm	1
[7]	SLT660F-36-7	U-Packing*	UN40	1
[8]	SLT660F-36-8	Air Breather		1
[9]	SLT660F-36-9	O-Ring*	Ø 11x1.9 mm	1
[10]	SLT660F-36-16	Valve Plug	M16x2	1
[11]	SB-12MM	Steel Ball	Ø 12mm	1
[12]	SLT660F-36-18	Spring		1
[13]	SLT660F-36-19	Steel Ball	Ø 9.525 mm	1
[14]	SLT660F-36-20	Steel Ball	Ø 6.35 mm	1
[15]	SLT660F-36-10	Relief Plug		1
[16]	SLT660F-36-11	Relief Adjusting Screw		1
[17]	SLT660F-36-9	O-Ring*	Ø 11 x 1.9 mm	2

Index No.	Part No.	Description	Size	Qty
[18]	SLT660F-36-13	Spring		1
[19]	SLT660F-36-14	Steel Ball Support		1
[20]	SB-5MM	Steel Ball	Ø 5 mm	1
[21]	SLT660F-36-21	Screw	M10 x 1	1
[22]	SLT660F-36-22	O-Ring*		1
[23]	SLT660F-36-23	Spring		1
[24]	SLT660FH-40-24	Steel Ball Support		1
[25]	SB-5MM	Steel Ball	Ø 5 mm	1
[26]	SLT660F-36-25	Spring		1
[27]	SLT660F-36-26	O-Ring*	Ø 10 x 1.9 mm	1
[28]	SLT660F-36-27	Adjusting Shaft		1
[29]	SLT660FH-40-29	Inner Washer*		1
[30]	SLT660F-36-29	Pump Cylinder		1
[31]	SLT660F-36-32	Screw		1
[32]	SLT660F-36-33	Valve Plug		1
[33]	SLT660F-36-34	Spring		1
[34]	SLT660F-36-30	Screw		1
[35]	SB-5MM	Steel Ball	Ø 5 mm	1
[36]	SLT660F-36-36	Pump Piston		1
[37]	SLT660F-36-35	Oil Seal*	UHS23.5	1
[38]	SLT660F-36-37	Oil Seal*	UHS18	1
[39]	SLT660F-36-38	U-Packing*	DHS18	1
[40]	SLT660FH-40-40	Outer Washer*		2
[41]	SLT660FH-40-41	Inside Cylinder Tube		1
[42]	SLT660FH-40-42	Inside Washer*		1
[43]	SLT660FH-40-43	O-Ring*	Ø 12 x 1.9mm	1
[44]	SLT660FH-40-44	Special Lowering Valve		1
[45]	SLT660FH-40-45	Filter		1
[46]	SLT660FH-40-46	Outer Cylinder Tube		1
[47]	SLT660FH-40-47	Pump Body		1
[48]	SLT660FH-40-48	Pump Piston Assembly (index # [31] thru [37])		1
41	SLT660FH-41	Adjusting Screw	M8 x 25	1
42	TS-2311081	Hex Nut	M8	1
43	SLC660F-38	C-Ring	Ø 20 mm	2
44	SLT660FH-44	Bushing	Ø 20 mm	1
45	SLC660F-39	Shaft		1
46	SLT660FH-46	Bushing		1
47	SLT660F-67	Fixed Seat		1
48	TS-2361051	Spring Washer	Ø 5 mm	2
49	SLT660F-74	Hex Cap Screw	M5 x 14	2
50	SLT660F-69	Spring Pin	Ø 6 x 22 mm	1
51	TS-2311081	Hex Nut	M8	1
52	SLT660F-73	Fixed Board		1
53	SLT660F-70	Hex Nut	M8	1
54	SLT660F-71	Socket Set Screw	M8 x 30	1
55	SLT660F-72	Hex Cap Screw	M8 x 25	1
56	SLC660F-40	Spring		1
57	SLC660F-41	Spring Cover		1
58	SLT660FH-58	Pin		1
59	SLT660FH-59	Pin		1
60	SLC660F-42	Slide Plate		1
61	SLC660F-56	Bushing		1
62	TS-1550071	Flat Washer	Ø 10 mm	2
63	SLT660FH-63	Split Pin	Ø 3 x 30 mm	2
64	SLC660F-45	Lever		1
65	SLC660F-45A	Rubber Bumper		1
66	TS-2361081	Spring Washer	Ø 8 mm	1
67	TS-1490051	Hex Cap Screw	M8 x 30	1
68	SLC660F-46	Foot Lever		1

Index No.	Part No.	Description	Size	Qty
69	SLC660F-47	Foot Lever Pad		1
70	SLT660FH-70	Hex Cap Screw	M10 x 30	1
71	SLT660FH-71	Safety Bar		1
72	SLT660FH-72	Hex Nut	M10	1
73	SLT660FH-73	Hex Cap Screw	M6 x 10	1
74	SLT660FH-74	Spring Washer	Ø 6mm	1
75	SLT660FH-75	Spring Clip		1
76	SLT660FH-76	Handle Assembly (index # 8 thru 11)		1
77	SLT660FH-77	Front Wheel Assembly (index # 25 thru 30)		1
78	SLT660FH-78	Swivel Wheel Assembly (index # 25-30, 33-37)		1
	SLT660FH-RK	Repair Kit		1

Index numbers with brackets [] are part of the hydraulic pump assembly #40.

Parts included in the SLT660FH-RK Repair Kit are indicated by an asterisk *.