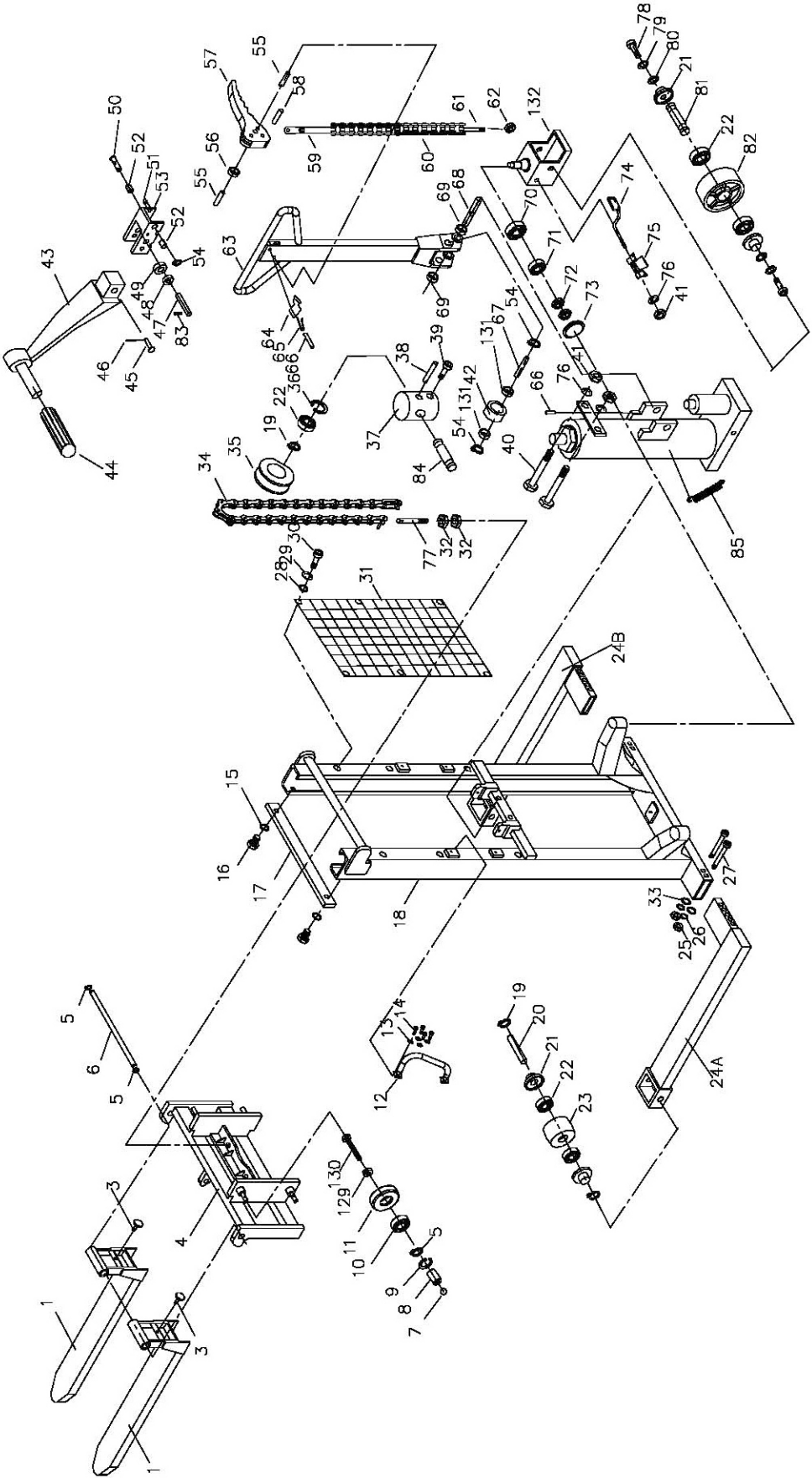


10.1.1 JHS-2200A Mast Assembly – Exploded View

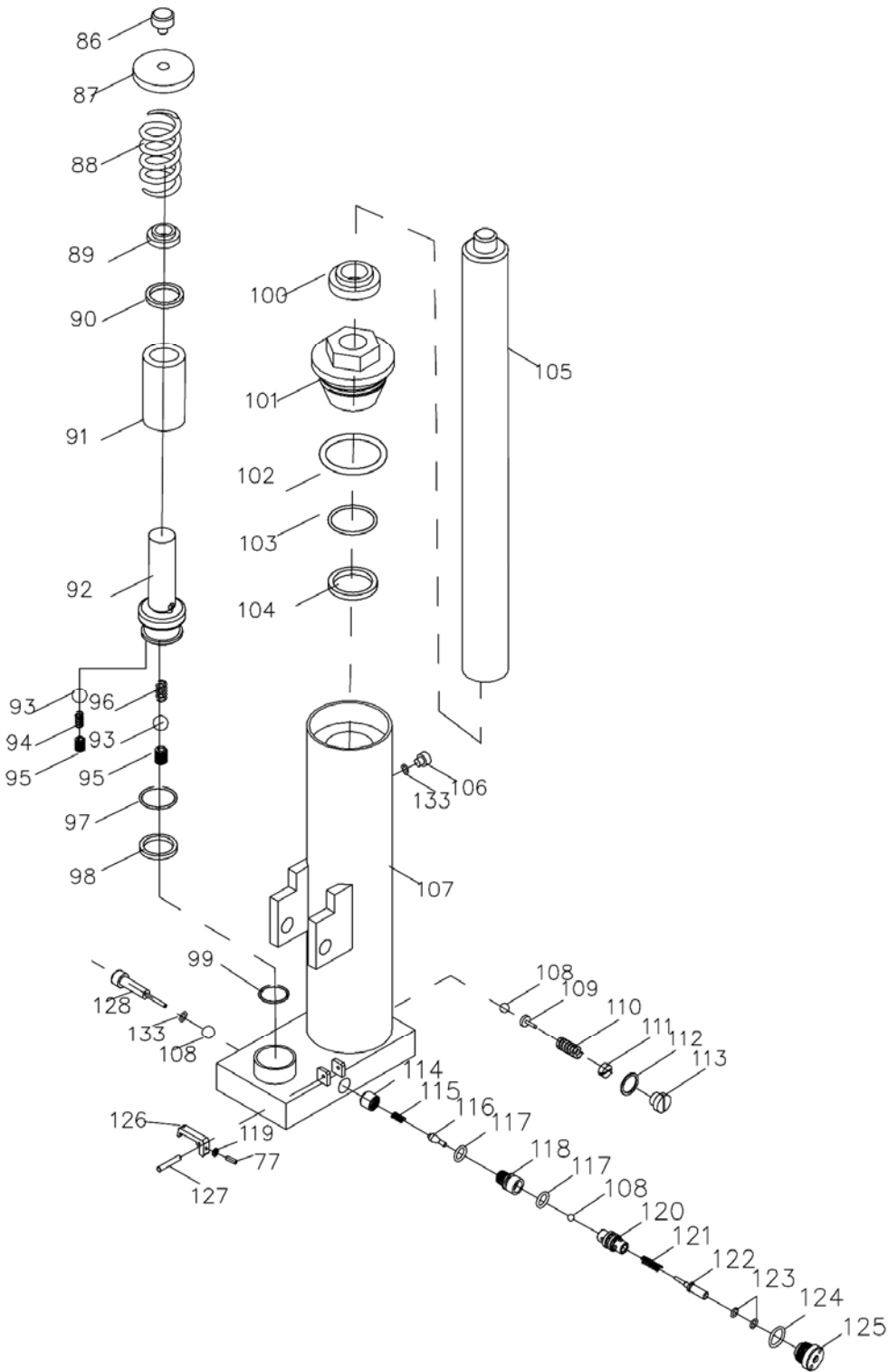


## 10.1.2 JHS-2200A Mast Assembly – Parts List

Index No	Part No	Description	Size	Qty
1	JHS2200-1	Fork		2
3	JHS1100-2	Adjusting Screw		2
4	JHS2200A-4	Mounting Plate		1
5	JHS2200A-5	Snap Ring	30mm	6
6	JHS2200A-6	Fork Shaft		1
7	SB-14MM	Steel Ball	14mm	4
8	JHS2200A-8	Steel Ball Housing		4
9	JHS2200A-9	Snap Ring	62mm	4
10	BB-6206ZZ	Ball Bearing	6206-2Z	4
11	JHS2200A-11	Guide Roller		4
12	JHS1100-13A	Rubber Grip Handle		2
13	TS-1551041	Lock Washer	6mm	16
14	TS-1503021	Socket Head Cap Screw	M6x10	16
15	TS-1551061	Lock Washer	8mm	2
16	TS-1504011	Socket Head Cap Screw	M8x10	2
17	JHS2200-17	Bar		1
18	JHS2200-18	Mast		1
19	JHS1100-17	Snap Ring	20mm	4
20	JHS2200-20	Front Wheel Axle		2
21	JHS1100-18	Dust Cap		8
22	BB-6204ZZ	Ball Bearing	6204-2Z	10
23	JHS1100-20	Front Wheel		2
24A	JHS2200-24A	Left Outrigger Leg		1
24B	JHS2200-24B	Right Outrigger Leg		1
25	TS-154010	Hex Nut	M16	4
26	TS-155110	Lock Washer	16mm	4
27	JHS2200A-27	Hex Head Bolt	M16x140	4
28	TS-1550031	Flat Washer	5mm	6
29	TS-1551031	Lock Washer	5mm	6
30	TS-1502031	Socket Head Cap Screw	M5x12	6
31	JHS2200-31	Steel Fence		1
32	TS-2310181	Hex Nut	M18	4
33	TS-155010	Flat Washer	16mm	4
34	JHS1100-35	Chain	05B-1x15mm	2
35	JHS1100-59	Chain Wheel		2
36	JHS1100-11	Snap Ring	47mm	2
37	JHS1100-60	Chain Wheel Bracket		1
38	JHS1100-61	Spring Pin	Ø8x50mm	1
39	TS-1503021	Socket Head Cap Screw	M6x10	1
40	TS-1490051	Hex Cap Screw	M8x30	2
41	TS-1541031	Nylon Lock Hex Nut	M8	4
42	JHS1100-65	Roller		1
43	JHS1100-42	Foot Pedal		1
44	JHS2200A-44	Rubber Grip		1
45	JHS2200A-45	Clevis Pin	8x40mm	1
46	JHS2200A-46	Cotter Pin	2.5x12mm	1
47	JHS1100-45	Roller Pin		1
48	JHS1100-46	Bushing	1715	1
49	JHS1100-47	Roller		1
50	JHS1100-51	Roller Axle		1
51	JHS2200A-51	Spring Pin	4x10mm	2
52	JHS1100-49	Bushing	1608	2
53	JHS1100-50	Foot Lever		1
54	JHS2200A-54	Snap Ring	16mm	3
55	JHS1100-52	Spring Pin	Ø4x22mm	2

Index No	Part No	Description	Size	Qty
56	JHS1100-53	Roller		1
57	JHS1100-54	Lever		1
58	JHS1100-55	Spring Pin	Ø6x30mm	1
	JHS2200A-RCA	Release Chain Assembly (includes #59 thru 61)		1
59	JHS2200A-59	Release Rod		1
60	JHS2200A-60	Chain		1
61	JHS2200A-61	Anchor Bolt		1
62	TS-1541011	Nylon Lock Hex Nut	M5	1
63	JHS1100-56A	Handle		1
64	JHS1100-57	Blocking Spring		1
65	JHS2200A-65	Spring		1
66	JHS1100-58	Spring Pin	Ø4x30mm	3
67	JHS1100-66	Shaft		1
68	JHS1100-64	Handle Pin		1
69	JHS2200A-69	Bushing	18x16x15mm	2
70	JHS2200A-70	Ball Bearing	32906	2
71	BB-6005	Ball Bearing	6005	2
72	JHS2200A-72	Hex Nut	M18	4
73	JHS2200A-73	Dust Cap		2
74	JHS1100-75	Foot Brake		2
75	JHS1100-76	Stop Lug		2
76	TS-1550061	Flat Washer	8mm	4
77	JHS2200A-77	Anchor Bolt		2
78	JHS2200A-78	Hex Cap Screw	M14x15	4
79	TS-2361141	Lock Washer	14mm	4
80	TS-155009	Flat Washer	14mm	4
81	JHS1100-83N	Wheel Axle		2
82	JHS1100-85N	Wheel		2
83	JHS1100-44	Spring Pin	Ø3x30mm	1
84	JHS1100-63	Shaft		1
85	JHS1100-69	Spring		1
129	TS-1540081	Hex Nut	M12	4
130	TS-1492051	Hex Cap Screw	M12x50	4
131	JHS2200A-131	Bushing		2
132	JHS1100-72A	Wheel Cover		2
	PT2748J-JET	JET Logo Label	2-5/8" x 7-1/2"	2
	JHS2200A-ID	ID/Warning Label		1
	JWS-FW	Fork Warning Label		2
	JWS-LCW	Load Center Warning Label		1

10.2.1 JHS-2200A Pump Assembly – Exploded View



## 10.2.2 JHS-2200A Pump Assembly – Parts List

Index No	Part No	Description	Size	Qty
	JHS2200A-PA	Pump Assembly (includes #86-133)		1
86	JHS1100-86	Bolt		1
87	JHS1100-87	Spring Cap		1
88	JHS1100-88	Spring		1
89	JHS1100-89	Dust Seal *	20x28x6mm	1
90	JHS1100-90	U-Ring *	20x28x5mm	1
91	JHS1100-91	Pump		1
92	JHS2200A-92	Plunger Piston		1
93	SB-4MM	Steel Ball	4mm	2
94	JHS1100-96	Spring		1
95	JHS1100-95	Adjusting Screw		2
96	JHS1100-94	Spring		1
97	JHS1100-98	Back-Up Ring *	18x24x1.25mm	1
98	JHS1100-99	U-Ring *	18x25x5mm	1
99	JHS1100-110	Washer		1
100	JHS1100-111	Dust Seal *	32x40x5.5mm	1
101	JHS1100-112	Cover		1
102	JHS1100-113	O-Ring *	63x3.55mm	1
103	JHS1100-114	O-Ring *	31.5x3.55mm	1
104	JHS1100-115	U-Ring *	32x40x5.5mm	1
105	JHS1100-116	Ram Piston		1
106	JHS1100-117	Oil Plug	M8x10	1
107	JHS2200A-107	Pump Body		1
108	SB-6MM	Steel Ball	6mm	2
109	JHS1100-120	Spring Base		1
110	JHS1100-121	Spring		1
111	JHS1100-122	Adjusting Screw		1
112	JHS2200A-112	O-Ring *	11.6x2.4mm	1
113	JHS1100-123	Relief Plug		1
114	JHS2200A-114	Bushing		1
115	JHS2200A-115	Spring		1
116	JHS2200A-116	Valve Stem		1
117	JHS1100-107	O-Ring *	13.2x2.65mm	2
118	JHS2200A-118	Valve Housing		1
119	TS-1540061	Hex Nut	M8	1
120	JHS2200A-120	Coupler		1
121	JHS2200A-121	Spring		1
122	JHS2200A-122	Valve Stem		1
123	JHS2200A-123	O-Ring *	7.5x1.8mm	2
124	JHS2200A-124	O-Ring *	19x2.65mm	1
125	JHS2200A-125	Release Plug		1
126	JHS2200A-126	Cam		1
127	JHS1100-43A	Spring Pin	Φ8x45mm	1
128	JHS2200A-128	Screw	M8x50	1
133	JHS2200A-133	O-Ring *	5.7x1.9mm	2
	JHS2200A-RK	Pump Repair Kit (includes items marked with *)		