



SERVICE PARTS LIST

BUL.54-08-2225

1/2" ELECTRIC DRILL

REVISED BUL 54-08-2225 DATE Feb'70

Catalog No. 1200-1

Starting Serial No. 134-7240

WIRING INSTR. 58-01-0210

Both Model and Serial No. must be furnished to obtain correct parts.

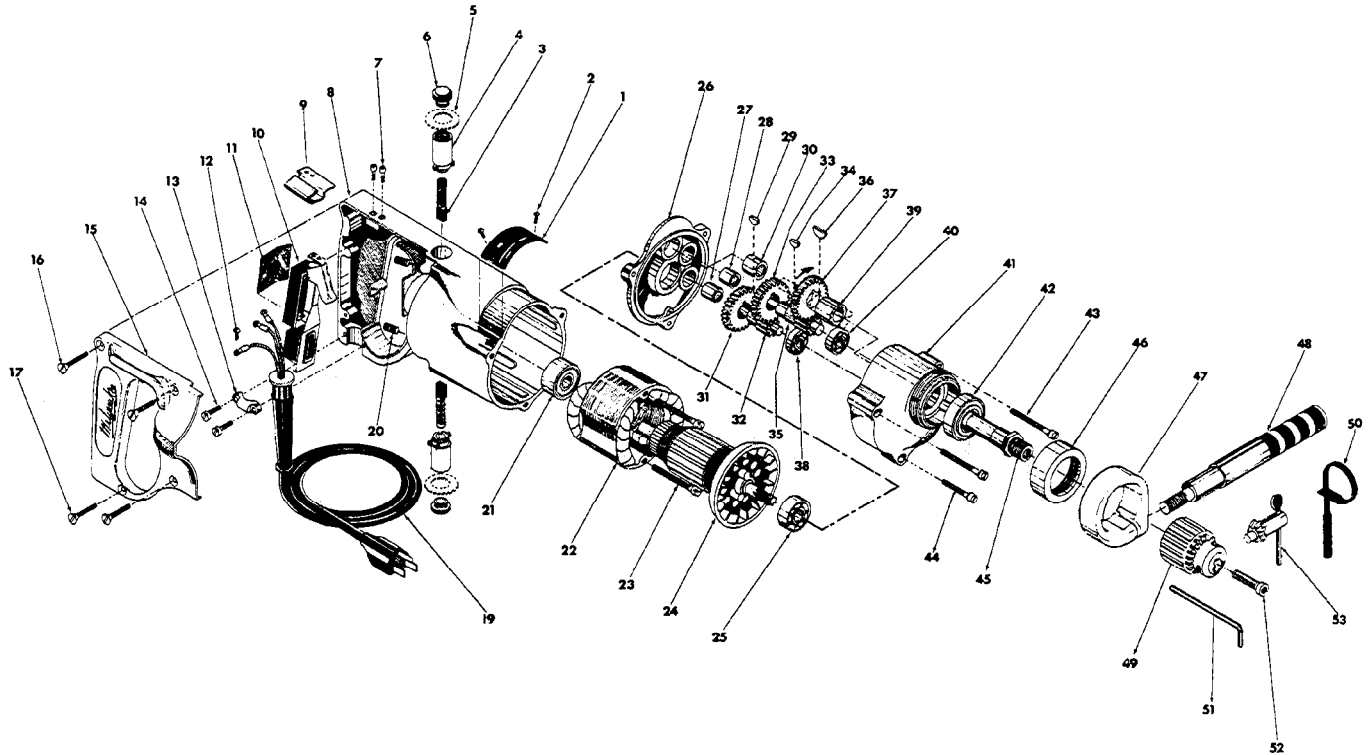


FIG.	PART NO.	DESCRIPTION OF PART	NO.REQ.
	1	12-98-0800 Name Plate	
★	2	06-77-0625 6x1/4 Rd.Driv-In Screw	(2)
	3	22-18-0100 Carbon Brush Assy.	(2)
	4	22-22-0080 Brush Holder Assy.	(2)
	5	23-86-0110 Brush Holder Insul. Washer	(2)
	6	23-44-0060 Brush Retaining Screw	(2)
	7	06-81-5800 6-32x5/16 Fil. Hd. Sem Sw. Mtg. Scr.	(2)
	8	28-50-4488 Motor Housing Assy. (Incl. Items 15, 16&17)	
★	9	42-68-0225 Wire Clamp	
	10	23-66-0485 Switch	
	11	23-16-0340 Switch Insulator	
	12	06-81-8625 6-32x1/4 Rd. Hd. (Brass) Sem Ground Scr.	
	13	28-17-0400 Cord Clamp	
	14	06-81-6150 8-32x1/2 Fil.Hd.Sem Cord Clamp Scr.	(2)
	15	28-20-3601 Handle Cover	
	16	06-81-3750 8-32x1Oval Hd. Handle Cover Scr.	(2)
	17	06-81-3700 8-32x7/8 Oval Hd. Handle Cover Scr.	(2)
	19	22-64-0380 Cord Set	
	20	06-83-2650 1/4-20x3/8Hd'less Brush Holder Set Scr.	(2)
	21	02-04-0970 Ball Bearing (Comm. End)	
	22	18-42-1141 Field Assy.	
	23	06-81-6600 8-32x1-3/4 Fil.Hd. Sem Field Scr.	(2)
	24	16-42-1210 Armature Assy.	
	25	02-04-0940 Ball Bearing (Pinion End)	
	26	28-28-0661 Diaphragm	
	27	02-50-1640 Needle Bearing	

FIG.	PART NO.	DESCRIPTION OF PART	NO.REQ.
	28	02-50-1640 Needle Bearing	
	29	06-42-0800 Woodruff Key	
	30	02-50-2110 Needle Bearing	
	31	32-40-1241 Intermediate Gear	
	32	36-66-2801 Intermediate Pinion Shaft	
	33	32-75-2041 Spindle Gear	
	34	06-42-0800 Woodruff Key	
	35	36-66-3951 Intermediate Pinion Shaft	
	36	06-42-1600 Woodruff Key	
	37	32-75-2641 Spindle Gear	
	38	02-04-0640 Ball Bearing	
	39	45-36-0210 Gear Spacer	
	40	02-04-0820 Ball Bearing	
	41	28-14-1261 Gear Case	
	42	02-04-1560 Ball Bearing	
	43	06-81-6650 8-32x1-3/4 Fil.Hd. Sem Gear Case Scr.	(2)
	44	06-81-6350 8-32x1 Fil. Hd. Sem Gear Case Scr.	
	45	38-50-3651 Spindle	
	46	42-52-0071 Bearing Cap	
★	47	28-82-0130 Handle Ring	
	48	43-62-0160 Handle	
	49	48-66-1360 Chuck	
	50	48-66-4040 Key Holder	
	51	49-96-0080 Socket Wrench	
	52	06-75-3150 1/4-20x1 L.H. Allen Hd. Chuck Scr.	
	53	48-66-3280 Chuck Key	