

## Rotary Hammer - 0 611 244 139 - 11244 E

www.powertools-aftersaleservice.com



**BOSCH**

Item	Part Number	Description	Illustration	Price	Quantity	Price Group
1	1 615 102 142	Motor Housing BLUE	1	-,-	1	29
2	1 614 220 131	Field 115-120V	1	-,-	1	34
4	1 617 200 048	Switch	1	-,-	1	28
5	1 614 460 057	Power supply cord USA/CDN 4,15m 2 x 2,08mm SJ 14/2	1	-,-	1	31
6	1 610 703 053	Grommet Ø9,7-Ø12x89 MM	1	-,-	1	13
7	1 601 302 018	Fastening Clamp	1	-,-	1	11
9	2 610 996 446	Manufacturer's nameplate	1	-,-	1	15
13	1 610 900 025	Deep-Groove Ball Bearing 7x22x7	1	-,-	1	22
15	1 616 610 071	Fan	1	-,-	1	23
19	1 615 806 094	Guide Tube	1	-,-	1	54
29	1 614 616 008	Compression Spring	1	-,-	1	13
31	1 616 490 047	Carrier	1	-,-	1	36
32	1 610 250 005	Stop Ring	1	-,-	1	26
34	1 610 102 622	Supporting Disc 1,5 MM THICK	1	-,-	1	14
35	1 615 806 089	Hammer Pipe	1	-,-	1	45
38	1 615 190 041	Covering hood	1	-,-	1	29
41	1 613 124 036	Striker Pin	1	-,-	1	29
46	1 611 015 036	Sealing Frame	1	-,-	1	18
51	1 616 333 027	Crown Gear Z=12	1	-,-	1	46
53	1 610 190 023	Stop Disc	1	-,-	1	17
54	1 610 101 014	Stop Disc	1	-,-	1	21
57	1 618 710 053	Striker	1	-,-	1	28
72	1 616 337 004	Eccentric Cog Wheel Z=35	1	-,-	1	42
75	1 615 132 059	Handle BLUE	1	-,-	1	26
80	1 617 233 025	Speed governor 100-120V	1	-,-	1	37
81	1 612 026 055	Switch-Pawl GRAY	1	-,-	1	21
84	1 612 025 060	Auxiliary Handle M8 BLACK	2	-,-	1	20
85	1 618 040 076	index turning toolholder	2	-,-	1	31
86	1 613 521 003	Stud bolt M8	2	-,-	1	25
87	1 611 316 003	Clamping Band Ø43 MM	2	-,-	1	13
88	1 613 100 012	Straight Pin	2	-,-	1	11
89	1 613 480 009	Wing Screw M6x25 MM	2	-,-	1	11
90	1 613 300 006	Hex Nut M6	2	-,-	1	11

Item	Part Number	Description	Illustration	Price	Quantity	Price Group
91	1 611 030 009	Clamping Plate	2	-,-	1	14
94	1 610 119 007	Spring retaining ring	1	-,-	1	11
96	2 916 660 024	Spring retaining ring 55x2MM, DIN 472	1	-,-	1	17
97	2 916 190 284	Shim ring DIN 988-45x55	1	-,-	1	10
98	1 610 101 622	Friction Washer 0,5 MM THICK	1	-,-	1	13
99	1 611 329 011	Holding Plate	1	-,-	1	19
101	1 610 210 094	O-Ring 20,0x3,0 MM	1	-,-	2	14
102	1 610 210 095	O-Ring 55,0x2,0 MM	1	-,-	1	11
103	1 610 210 117	O-Ring 54,0x1,5 MM	1	-,-	1	11
104	1 610 210 093	O-Ring 17,0x8,0 MM	1	-,-	1	11
105	1 610 210 096	O-Ring 21,0x3,5 MM	1	-,-	2	14
108	1 900 210 103	O-Ring 8,0x1,5 MM	1	-,-	2	11
109	1 610 283 022	Rotary shaft lip seal	1	-,-	1	20
110	1 610 116 003	Spring retaining ring	1	-,-	1	11
111	1 610 210 081	O-Ring 10,0x1,0 MM	1	-,-	1	15
112	1 613 461 001	Threaded Ring M24x1,5MM, SW10	1	-,-	1	21
113	1 610 501 036	Bushing	1	-,-	1	21
116	1 610 116 004	Spring retaining ring	1	-,-	1	11
118	1 610 913 009	Needle-Roller Assembly	1	-,-	2	23
119	1 610 913 011	Needle-Roller Assembly Ø10 MM	1	-,-	1	19
121	1 610 905 014	Deep-Groove Ball Bearing	1	-,-	1	35
122	1 610 913 029	Needle-Roller Assembly	1	-,-	1	16
124	1 610 101 008	Thrust Bearing Disc 1,0 MM THICK	1	-,-	1	11
125	2 912 401 036	Tapping Screw DIN7981-ST4,8x25-C-Z	1	-,-	4	10
126	2 910 211 019	Tapping Screw DIN 7971-ST3,9x16-F	1	-,-	1	10
127	2 912 311 166	Oval-Head Screw DIN 7985-M5x30-8.8	1	-,-	2	10
128	2 910 211 037	Tapping Screw DIN 7971-BZ4,8x32	1	-,-	2	11
129	2 912 401 037	Tapping Screw DIN 7981-ST4,8x32C-Z	1	-,-	2	10
131	2 610 906 894	Reference Plate	1	-,-	1	15
136	2 910 211 236	Tapping Screw DIN 7971-ST4,8x25-C	1	-,-	6	10
138	2 910 405 203	Hex Socket Head Cap Screw DIN 912-M6x25-12.9	1	-,-	4	10
139	2 916 690 005	Spring Lock Washer M6	1	-,-	4	11
148	1 610 102 627	Shim 0,2 MM THICK	1	-,-	2	13
148	1 610 102 633	Shim 0,3 MM THICK	1	-,-	1	13
151	2 600 210 028	O-Ring 21,0x2,0 MM	1	-,-	1	11
152	1 610 508 030	Cover	1	-,-	1	11
239	1 610 005 002	Felt Disc Ø39x15 MM	1	-,-	1	13
651	2 600 508 018	Sealing cap	2	-,-	1	13
803	1 614 010 188	Armature 120V	1	-,-	1	47
808	1 601 106 032	Nameplate 26x52 MM	1	-,-	1	13
814	1 617 000 822	Deep-Groove Ball Bearing	1	-,-	1	34
818	2 910 011 088	Socket head cap screw DIN 84-AM3,5x12-5.8	1	-,-	2	10
820	1 617 000 950	Tool Holder Set	1	-,-	1	34
821	1 617 000 014	Locking Bolt Set	1	-,-	1	30
837	1 617 000 291	Retaining Bracket BLACK	1	-,-	1	15
840	1 617 000 951	Impact Mechanism Housing	1	-,-	1	46
842	1 614 336 009	Brush Holder	1	-,-	1	36
843	1 615 808 078	Bearing cover BLUE	1	-,-	1	32
845	1 617 000 963	Gear Housing	1	-,-	1	49
856	1 617 000 999	Hammer Piston	1	-,-	1	30
860	1 617 000 817	Spur Wheel Clutch	1	-,-	1	46
884	1 612 025 039	Auxiliary Handle	2	-,-	1	37
886	1 617 014 122	Carbon-Brush Set	1	-,-	1	28

Item	Part Number	Description	Illustration	Price	Quantity	Price Group
887	1 613 212 004	Rubber Buffer	1	-,-	2	15
889	2 912 401 005	Tapping Screw DIN7981-ST2,9x9,5C-Z	1	-,-	2	10
890	1 614 336 043	Brush Guide	1	-,-	2	15
898	1 617 000 263	Wear and Tear Part Set	1	-,-	1	40

Illustration - Type E

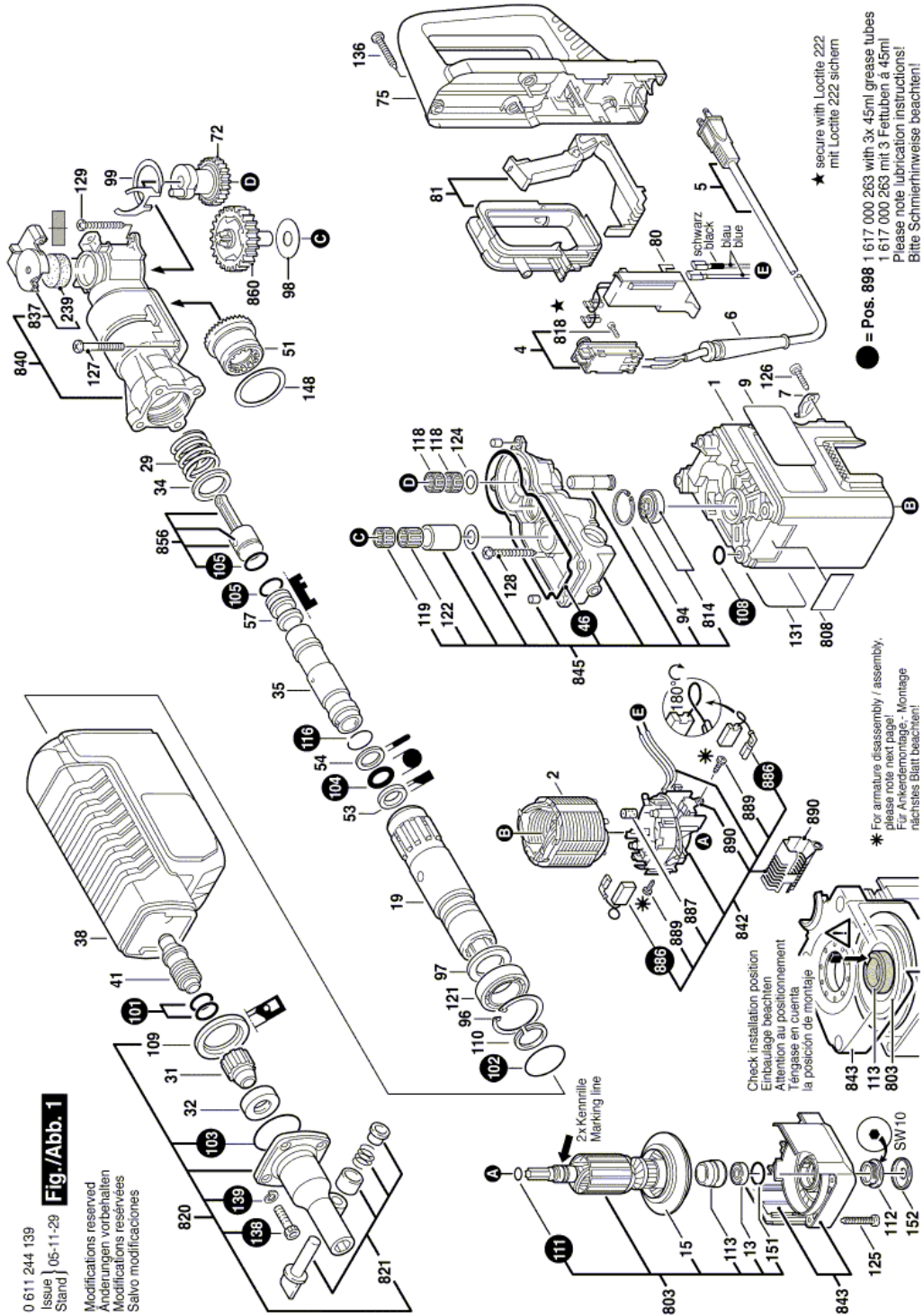
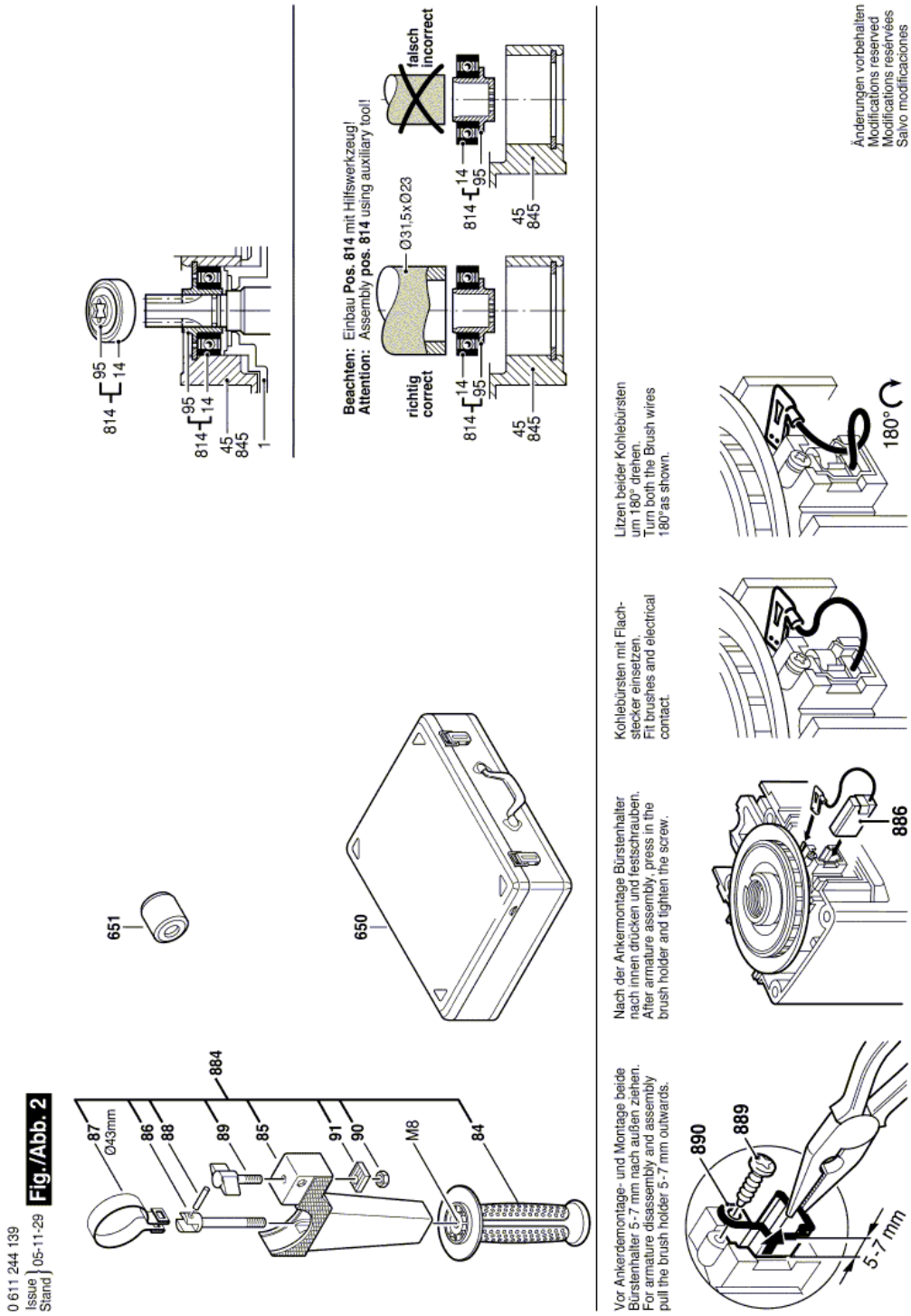


Illustration - Type E



Information subject to change without further notice.