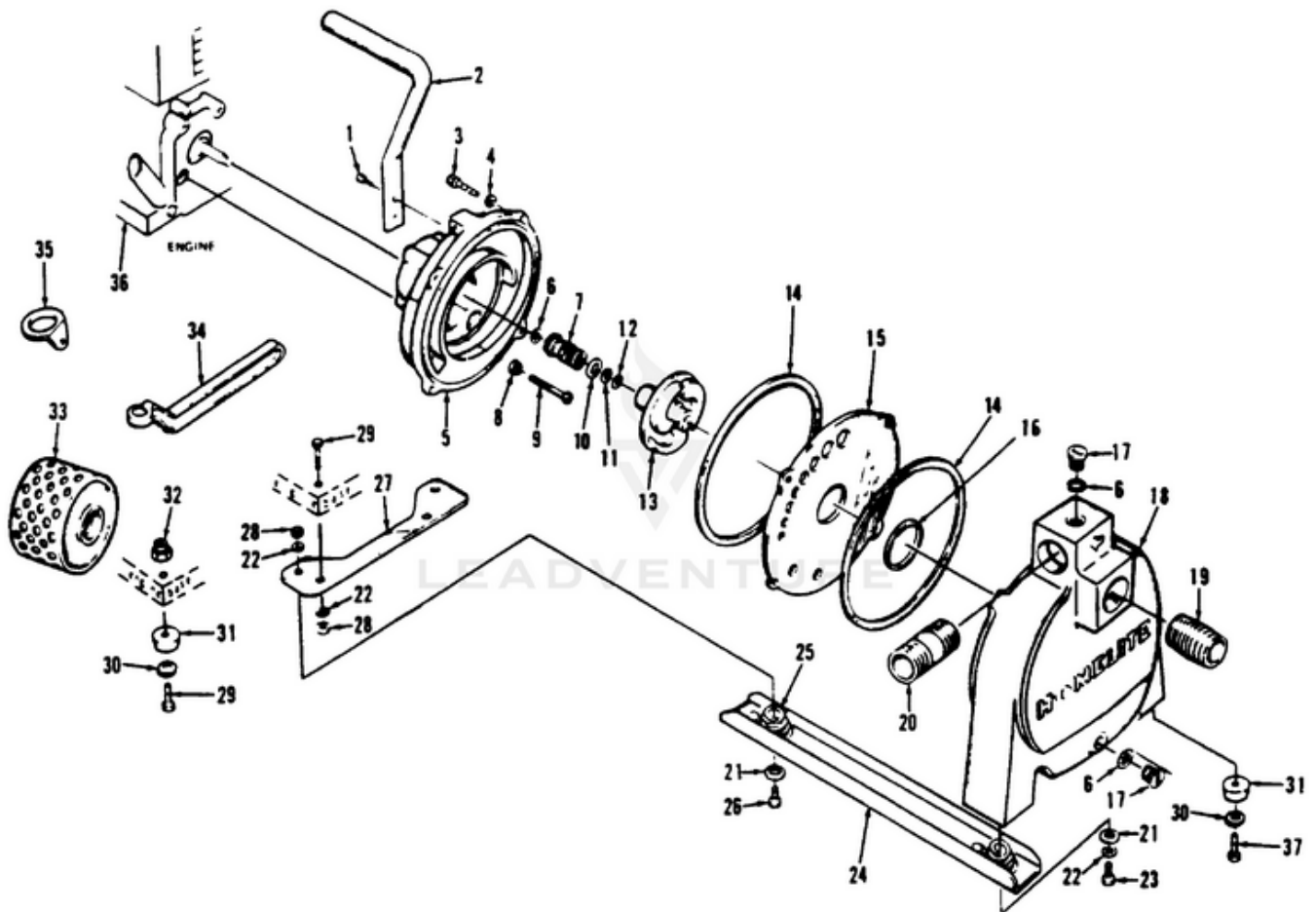


110S11/21 Self-Priming Centrifugal Pump UT-01470 01470-UT 110S11/21 Self-Priming Centrifugal Pump UT-01470  
 110S11/21 Self-Priming Centrifugal Pump - Pump



Rendered by LeadVenture, Inc.

Ref #	Part #	Description	Qty
1	806813	SCREW-lock hex, 1/4-20 x 1/2	2
2	628762	HANDLE-carrying	1
3	80284	SCREW-slot hex, 1/4-20 x 1	4
4	83009	WASHER-lock, 1/4	4
5	628662	HOUSING-impeller	1
6	76885A	WASHER	3
7	A628612	SEAL-pump	1
8	62874	WASHER-sealing	4
9	80927	SCREW-slot hex, 5/16-24 x 2-1/4	4
10	62882A	SHIM-seal, .010	A/ R
	62883A	SHIM-seal, .015	A/ R
11	84056	WASHER-spacer	2
12	62872	SHIM-impeller, .010	A/ R
	62873	SHIM-impeller, .015	A/ R
13	628683	IMPELLER	1
14	62871	GASKET	2
15	628691	PLATE-wear	1
16	62870	GASKET-impeller housing	1
17	548586	PLUG-drain	2
18	A50849	HOUSING-end (aluminum)	1
19	759591	FITTING-suction	1
20	627071	FITTING-discharge	1
21	84032	WASHER-flat, 5/16	4
22	83002	WASHER-lock, 5/16	6
23	800831	SCREW-5/16-18 x 3/4	2
24	A62890	SKID	2
25	50389	SPRING-foot (ea. assembly)	2

<b>Ref #</b>	<b>Part #</b>	<b>Description</b>	<b>Qty</b>
26	800851	SCREW-hex, 5/16-18 x 1	2
27	628881	BAR-mounting	1
28	810181	NUT-5/16	4
29	80087	SCREW-5/16-18 x 1-1/2	2
30	840651	WASHER-flat, 5/16	2
	840651	WASHER-flat, 5/16 (110SU1-1/2 - 1B only)	4
31	61966	FOOT-rubber	2
	61966	FOOT-rubber (110SU1-1/2 - 1B only)	4
32	81096	NUT-lock, 5/16	2
33	30127	STRAINER	1
34	22139	WRENCH-spanner	1
35	624501	BRACKET-wrench holder	1
36	50859	ENGINE-Briggs & Stratton	1
	50782	ENGINE-Briggs & Stratton, SU models only	1
37	80741	SCREW-hex hd., 5/16-18 x 5/8	2
	23742A	DECAL-universal	1
	23488-B	LOCTITE	
	23475	PAINT-spray can, red	