

**IMPORTANT** — To assure product **SAFETY** and **RELIABILITY**, repairs, maintenance or adjustments should be performed by **MAKITA** Service Centers or other qualified service organizations. Always use **MAKITA** replacement parts.

### WIRING DIAGRAM

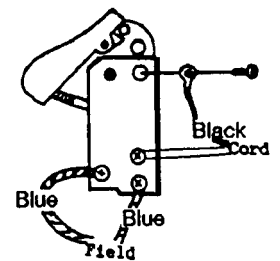


Fig.	Part No.	Qty. Used	Description	Fig.	Part No.	Qty. Used	Description
1	911001-2	2	SCREW M3X6	39	342002-3	1	DRUM COVER
2	652014-1	4	SCREW M4X8	40	924206-5	1	SCREW M5X10
3	911228-4	2	SCREW M5X18	41	942101-7	1	WASHER 5
4	953106-2	2	RIVET 0-5	42	941101-4	1	WASHER 5
5	651007-5	1	SWITCH	43	342001-5	1	DEPTH GUIDE
6	*	2	SCREW M4X6	44	251804-5	1	SCREW M6X12
7	682502-4	1	CORD GUARD	45	156510-6	1	MAIN FRAME
8	911133-5	2	SCREW M4X18	46	231001-9	1	COMPRESSION SPRING 17
9	*	1	STRAIN RELIEF	47	421001-9	1	RUBBER PACKING
11	664074-1	1	POWER SUPPLY CORD (2X18X16;SJ)	48	312002-7	1	FRONT BASE
12	911153-9	3	SCREW M4X28	49	251609-3	6	BOLT M6X17
13	411002-5	1	HANDLE COVER	50	345001-4	2	DRUM PLATE
14	211068-3	1	BALL BEARING 6200LB	51	251246-3	4	SCREW M4X5
15	681623-9	1	INSULATION WASHER	52	342430-2	2	ADJUST PLATE
16	623012-2	1	FIELD ASSEMBLY (With Garter Spring 654019-7)	53	911226-8	2	SCREW M5X18
17	613002-3	1	ARMATURE ASSEMBLY (Incl. Fig.14,15,17,18,19)	54	323001-4	1	DRUM REAR SHAFT
18	241001-1	1	FAN	55	253139-0	1	WASHER 8
19	211066-7	1	BALL BEARING 6200LLB	56	211032-4	1	BALL BEARING 608ZZ
20	156315-4	1	BRACKET	57	961004-6	1	RETAINING RING S-8
21	222002-8	1	V-PULLEY 5-26.5L	58	161048-8	1	DRUM
22	225001-9	1	POLY V-BELT 5-285	59	211107-9	1	BALL BEARING 6201ZZ
23	411004-1	1	BELT COVER	60	263005-3	1	RUBBER PIN 6
24	911148-2	2	SCREW M4X25	61	312003-5	1	DRUM HOUSING
25	643600-9	2	BRUSH HOLDER CAP	62	911121-2	4	SCREW M4X14
26	191945-4	1	CARBON BRUSH SET (CB-124)	63	222001-0	1	V-PULLEY 5-29.4
27	*	1	MOTOR HOUSING (With Brush Holder 643603-3, S.Screw M5X8 913206-0, Screw 911216-1)	<b>ACCESSORIES</b>			
28	263013-4	1	RUBBER PIN 4	400	123004-6	1	SHARPENING HOLDER ASSY (Incl. 2 ea. Bolt 251920-3, Wing Nut 934301-3)
29	911290-9	2	SCREW M5X65	404	161046-2	1	GUIDE RULE
32	263002-9	1	RUBBER PIN 4	406	783002-8	1	SCREWDRIVER, PHILLIPS
33	911146-6	5	SCREW M4X25	407	123010-1	1	BLADE GAUGE ASSEMBLY
34	271226-3	1	KNOB 50	409	191686-2	1	SAFETY GOGGLES
35	941251-5	1	WASHER 10	410	782209-3	1	SOCKET WRENCH 9
36	312004-3	1	CHIP COVER	411	181178-9	1	STEEL TOOL CASE
37	911136-9	1	SCREW M4X20	412	731001-4	1	PLANER BLADE SET, H.S.S.
38	951131-7	1	SPRING PIN 4-40	413	192157-2	1	DOUBLE EDGED PLANER BLADE SET (Incl. Blade 793322-2, Set Blade 343433-9)

2 MODEL 1100

\* SEE SERVICE CHANGE 1

## SERVICE CHANGE

1. Change on Motoe Housing and Strain Relief from S/N 677,309E.

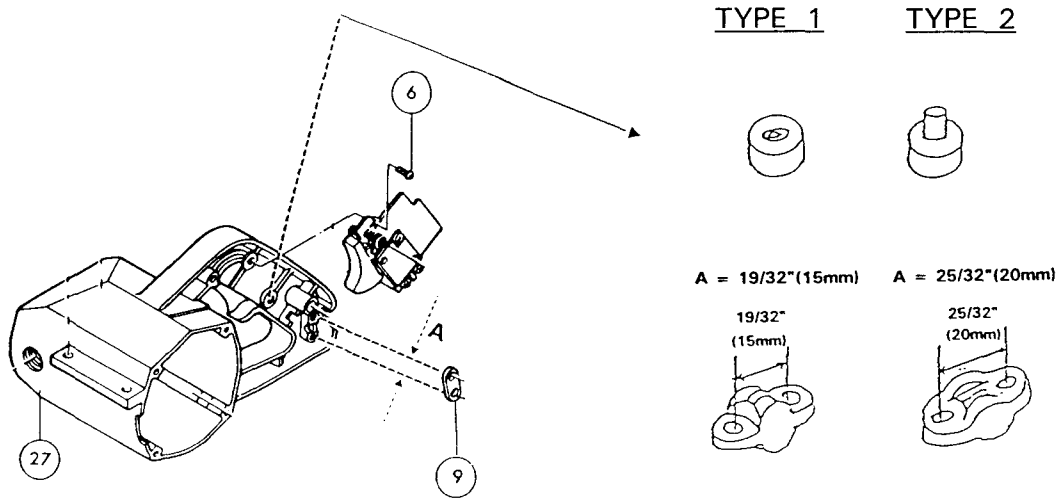


FIG.	DESCRIPTION	TYPE 1	TYPE 2
6	Screw M4x6	Part# 911101-8 (uses 2)	Part# 911101-8 (uses 1)
9	Strain Relief	Part# 687002-9	Part# 687063-9
27	Motor Housing	Part# 156308-1 (Discontinued)	Part# 159655-9

The above parts are interchangeable as a set.