



# SERVICE PARTS LIST

BUL.54-08-2125

1/2" ELECTRIC DRILL

REVISED BUL 54-08-2125 DATE Feb.'70

Catalog No. 1100-1

Starting Serial No. 133-17395

WIRING INSTR. 58-01-0210

Both Model and Serial No. must be furnished to obtain correct parts.

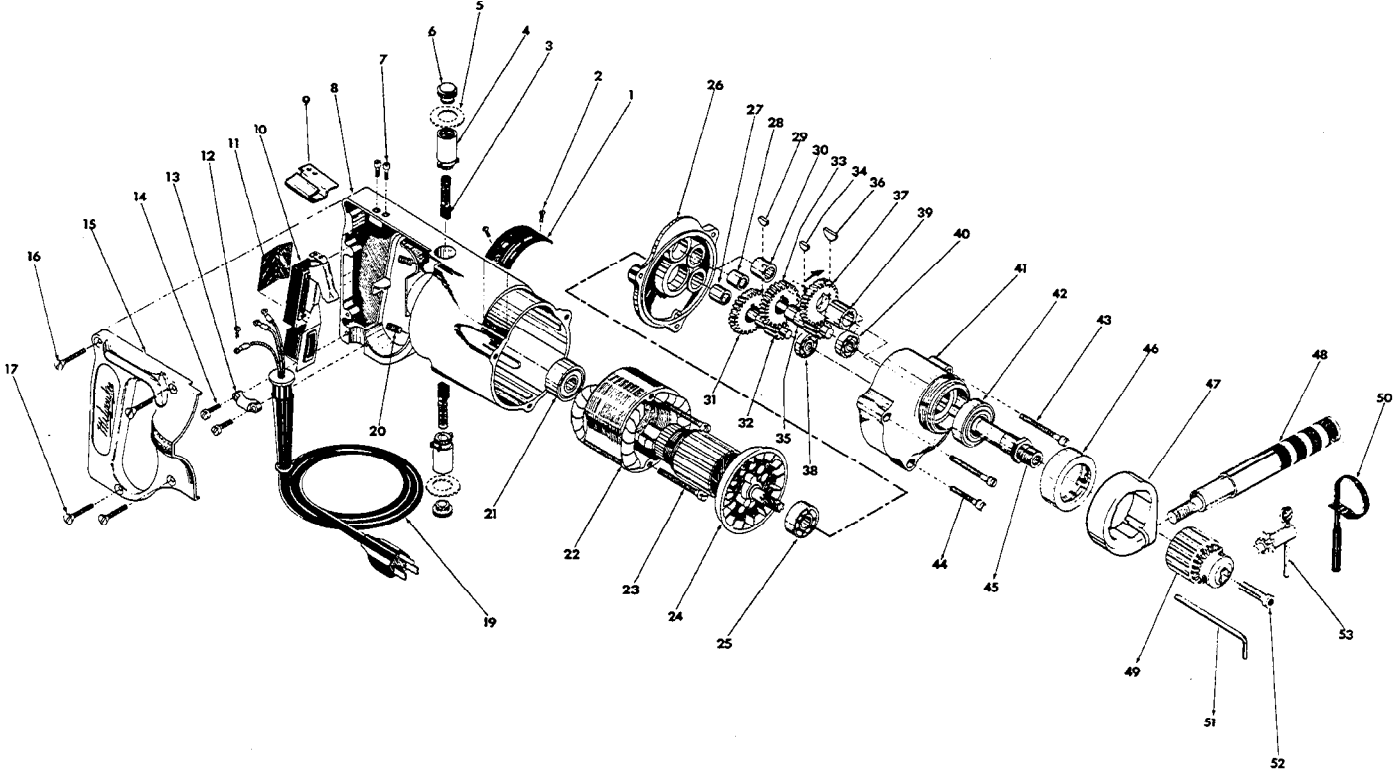


FIG.	PART NO.	DESCRIPTION OF PART	NO.REQ.
	1	Name Plate	
★	2	6x1/4 Rd.Driv-In Screw	(2)
	3	Carbon Brush Assy.	(2)
	4	Brush Holder Assy.	(2)
	5	Brush Holder Insul. Washer	(2)
	6	Brush Retaining Screw	(2)
	7	6-32x5/16 Fil. Hd. Sem Sw. Mtg. Scrs.	(2)
	8	Motor Housing Assy. (Incl. Items 15, 16&17)	
★	9	Wire Clamp	
	10	Switch	
	11	Switch Insulator	
	12	6-32x1/4 Rd. Hd. (Brass) Sem Ground Scr.	
	13	Cord Clamp	
	14	8-32x1/2 Fil.Hd.Sem Cord Clamp Scrs.	(2)
	15	Handle Cover	
	16	8-32x1Oval Hd. Handle Cover Scrs.	(2)
	17	8-32x7/8 Oval Hd. Handle Cover Scrs.	(2)
	19	Cord Set	
	20	1/4-20x3/8Hd"less Brush Holder Set Scrs	(2)
	21	Ball Bearing (Comm. End)	
	22	Field Assy.	
	23	8-32x1-3/4 Fil.Hd. Sem Field Scrs.	(2)
	24	Armature Assy.	
	25	Ball Bearing (Pinion End)	
	26	Diaphragm	
	27	Needle Bearing	

FIG.	PART NO.	DESCRIPTION OF PART	NO.REQ.
	28	Needle Bearing	
	29	Woodruff Key	
	30	Needle Bearing	
	31	Intermediate Gear	
	32	Intermediate Pinion Shaft	
	33	Spindle Gear	
	34	Woodruff Key	
	35	Intermediate Pinion Shaft	
	36	Woodruff Key	
	37	Spindle Gear	
	38	Ball Bearing	
	39	Gear Spacer	
	40	Ball Bearing	
	41	Gear Case	
	42	Ball Bearing	
	43	8-32x1-3/4 Fil.Hd. Sem Gear Case Scrs.	(2)
	44	8-32x1 Fil. Hd. Sem Gear Case Scr.	
	45	Spindle	
	46	Bearing Cap	
★	47	Handle Ring	
	48	Handle	
	49	Chuck	
	50	Key Holder	
	51	Socket Wrench	
	52	1/4-20x1 L.H. Allen Hd. Chuck Scr.	
	53	Chuck Key	