

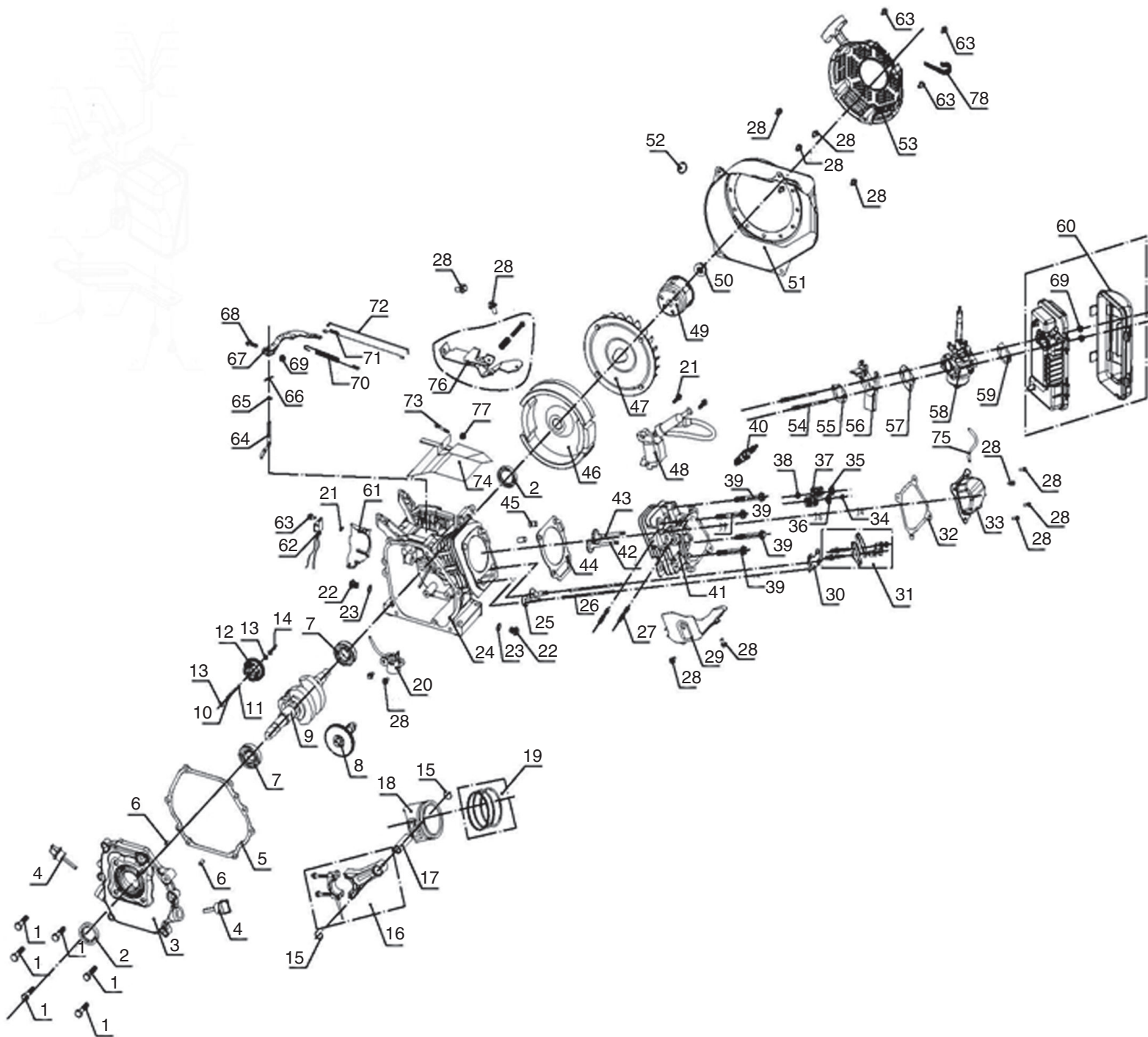


Engine Parts Manual

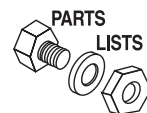
208cc (G24)

NOTICE!

The information in this manual is known to be accurate as of the date of release shown on the cover. However, engineering changes can occur without notice. To obtain the proper parts, please be sure to use the serial number of the unit being serviced when ordering from this manual. Always refer to any part notes and changes before ordering. There may be parts on the unit which are not shown in this manual. For such parts, consult an Authorized Service Dealer.



208cc ENGINE



ITEM	PART NO.	QTY.	DESCRIPTION
1	0H33750125	6	BOLT, M8X33.5
2	0H33750112	2	SEAL, OIL, CRANKSHAFT
3	0H3375A110	1	COVER, CRANKCASE
4	0H33750120	2	DIPSTICK, OIL W/ ORING
5	0H33750122	1	GASKET, CRANKCASE
6	0H33750124	2	PIN,SET, M8X14
7	0H33750123	2	BEARING, (6205)
8	0H33750154	1	CAMSHAFT ASSY.
9	0H3375A114	1	CRANKSHAFT ASSY.
10	0H33750117	1	SHAFT, REGULATING
11	0H33750118	1	RING, SNAP
12	0H33750279	1	GEAR, SPEED GOVERNING
13	0H33750280	2	WASHER, SPEED SWINGING ROD
14	0H33750281	1	DISH, SPEED GOVERNING PUSH
15	0H33750149	2	CIRCLIP, PISTON RING
16	0H33750152	1	ROD ASSY., CONNECTING
17	0H33750151	1	PIN, PISTON
18	0H33750150	1	PISTON
19	0H33750148	1	RING SET, PISTON
20	0H33750165	1	SENSOR, OIL
21	0H33750167	3	BOLT, M6X22
22	0H33750110	2	PLUG, DRAIN
23	0H33750111	2	WASHER, DRAIN PLUG
24	0H33750113	1	CRANKCASE
25	0H33750142	2	TAPPET
26	0H33750143	2	ROD, PUSH
27	0H33750136	2	STUD, AM 8X34
28	0H33750126	16	BOLT, M6X12
29	0H33750145	1	COVER, LEAD WIND
30	0H33750130	1	GUIDE, PUSH
31	0H33750129	2	ROCKER, ASSEMBLY, VALVE
32	0H33750128	1	GASKET, CYLNDR HEAD CVR
33	0H33750127	1	COVER, CYLINDER HEAD
34	0H33750131	1	CAP
35	0H33750133	1	SEAT, INTAKE SPRING
36	0H33750132	1	SEAT, EXHAUST SPRING
37	0H33750134	2	SPRING, VALVE
38	0H33750146	1	SEAL, OIL PIPE
39	0H3375A123	4	BOLT, M8 X 60
40	0H33750169	1	PLUG, SPARK
41	0H3375A117	1	HEAD, CYLINDER

ITEM	PART NO.	QTY.	DESCRIPTION
42	0H33750140	1	VALVE, EXHAUST
43	0H33750141	1	VALVE, INTAKE
44	0H33750138	1	GASKET, CYLINDER HEAD
45	0H33750139	2	PIN, SET
46	0H33750155	1	FLYWHEEL
47	0H33750156	1	FAN, FLYWHEEL
48	0H33750168	1	COIL ASSY., IGNITION
49	0H33750157	1	CUP, STARTING
50	0H33750158	1	NUT, M14X1.5
51	0H33750160	1	HOOD, FAN
52	0H33750282	1	JAM, RUBBER
53	0H33750162	1	STARTER ASSY., RECOIL
54	0H33750277	2	STUD, M6 X 105
55	0H33750175	1	GASKET, INTAKE
56	0H33750176	1	BLOCK, CONNECTING
57	0H33750177	1	GASKET, CARBURETOR
58	0J5343A	1	CARBURETOR ASSY 3250 UP PH3
59	0H33750179	1	GASKET, AIR CLEANER
60	0H3375A122	1	CLEANER, AIR
61	0H33750163	1	SHROUD, COMPLETE
62	0H33750283	1	VALVE, SHEET WIZARD
63	0H3375A124	4	BOLT, M6 X 8, SMALL HEAD
64	0H33750114	1	BAR, SWAY, REGULATING
65	0H33750115	1	WASHER
66	0H33750116	1	PIN, SPLIT
67	0H33750185	1	ARM, REGULATING
68	0H33750184	1	BOLT, LOCK
69	0H33750171	3	NUT, M6
70	0H33750181	1	SPRING, BACK
71	0H33750182	1	SPRING, REGULATING
72	0H33750183	1	ROD, PULLING
73	0H33750275	1	BOLT, M5 X 30
74	0J08180121	1	HOOD, UPPER WIND
75	0H33750172	1	TUBE, BREATHING
76	0H33750180	1	REGULATOR ASSY.
77	0H33750278	1	NUT, M5
78	0J5628C110	1	EVAPORATION PIPE CLAMP
Not Shown	0H33750219		ELEMENT, AIR CLEANER
Not Shown	0H3375B00SM		208cc GASOLINE ENG (G24) SM Kit