



SERVICE PARTS LIST

BULLETIN NO.
54-49-8411

SPECIFY CATALOG NO. AND SERIAL NO. WHEN ORDERING PARTS		REVISED BULLETIN	DATE
M18 FUEL™ PACKOUT™ 2.5 Gal Wet/Dry Vacuum		54-49-8410	July 2025
CATALOG NO.	0970-20	SERIAL NO.	L90B
		WIRING INSTRUCTION Pages 2-3	

EXAMPLE:
00 0 Component Parts (Small #)
Are Included When Ordering
The Assembly (Large #).

★ = Part number change from
previous service parts list.

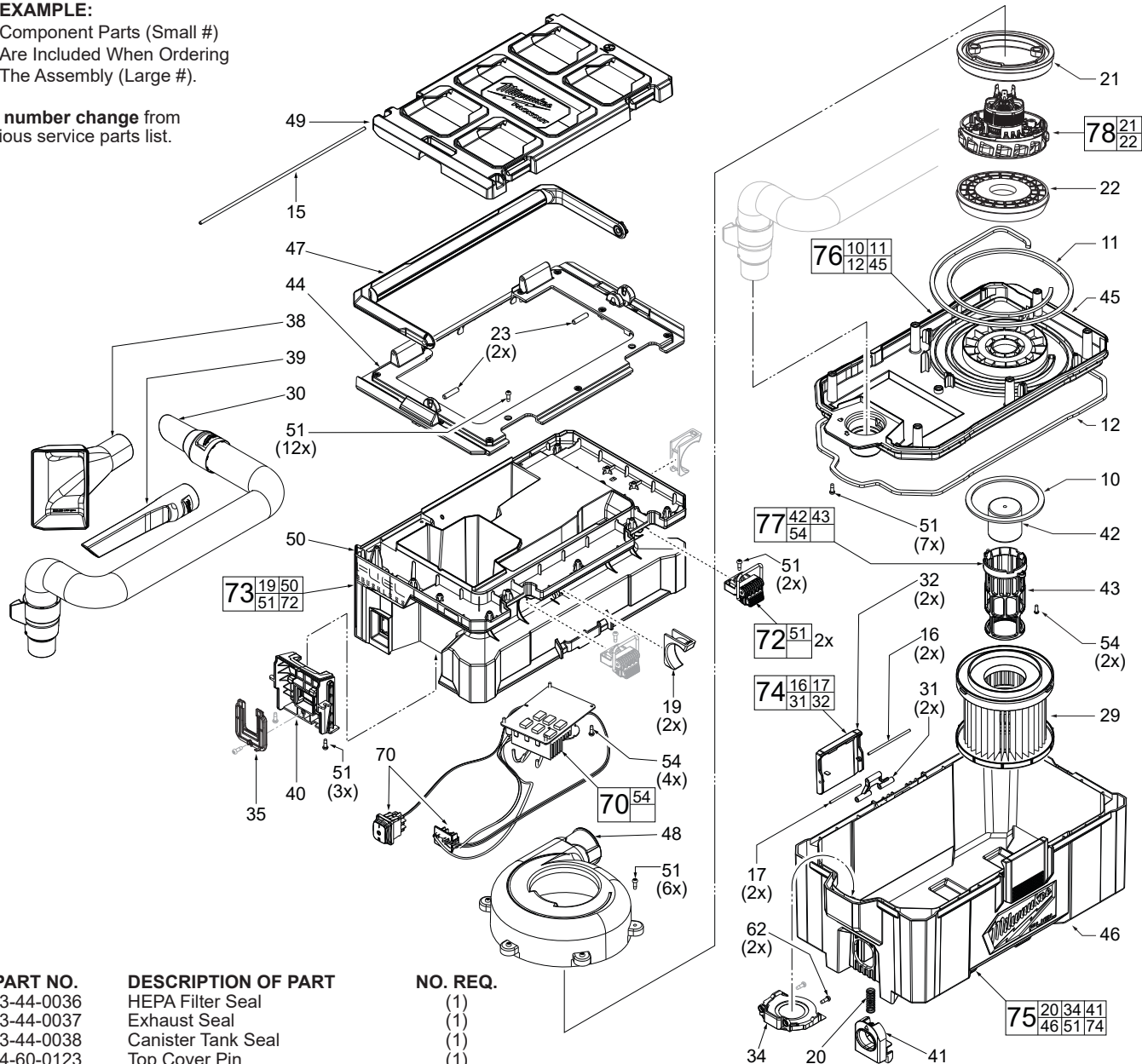
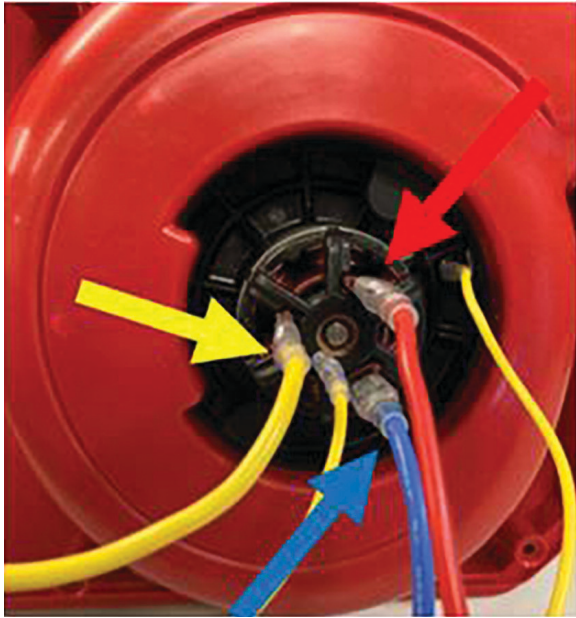


FIG.	PART NO.	DESCRIPTION OF PART	NO. REQ.
10	43-44-0036	HEPA Filter Seal	(1)
11	43-44-0037	Exhaust Seal	(1)
12	43-44-0038	Canister Tank Seal	(1)
15	44-60-0123	Top Cover Pin	(1)
16	-----	Tank Latch Pin-Long	(2)
17	-----	Tank Latch Pin-Short	(2)
19	43-72-0051	Hose Holder	(2)
20	40-50-0213	Latch Spring	(1)
21	-----	Isolator Top	(1)
22	-----	Isolator Bottom	(1)
23	44-60-0124	Handle Pin	(2)
29	49-90-1900	HEPA Filter	(1)
30	49-90-2014	Hose Assembly	(1)
31	-----	Tank Latch Pivot	(2)
32	-----	Tank Latch	(2)
34	42-16-0012	Dust Bag Holder	(1)
35	44-66-0218	Terminal Block Mounting Plate	(1)
38	31-01-0875	Utility Tool	(1)
39	31-01-0855	Crevice Tool	(1)
40	23-33-0018	Battery Receptacle	(1)
41	44-20-0085	PACKOUT™ Latch	(1)
42	-----	Ball Float	(1)
43	-----	Ball Float Cage	(1)
44	31-50-0101	Main Body Cover	(1)
45	-----	Connector Plate	(1)
46	-----	Tank	(1)

FIG.	PART NO.	DESCRIPTION OF PART	NO. REQ.
47	31-44-0236	Carrying Handle	(1)
48	31-15-0167	Exhaust Chute	(1)
49	31-50-0108	Top Cover	(1)
50	-----	Main Body	(1)
51	06-82-1081	M4 x 12mm Pan Hd. ST Screw	(30)
53	12-20-0267	Service Nameplate (Not Shown)	(1)
54	06-82-1083	M3.5 X 10mm Pan Hd. ST Screw	(6)
62	05-74-1011	8-18 x 12mm Hi-Lo T15 Screw	(2)
★ 70	14-20-0241	Service Electronics Assembly	(1)
72	14-46-0316	Service Latch Kit-Main Body	(2)
73	14-38-0116	Main Body Service Assembly	(1)
74	14-46-0422	Service Latch Assembly-Tank (set of 2)	(1)
75	31-01-0173	Tank Service Assembly	(1)
76	44-66-0277	Connector Plate Service Kit	(1)
77	42-46-0027	Float Ball/Cage Service Kit	(1)
★ 78	14-50-0970	Motor/Stator Assembly	(1)

WIRING INSTRUCTIONS



Going in a Clockwise order, starting at the Yellow Ground wire, connect the **YELLOW** PCBA wire to the terminal on the motor's left side.
NOTE - Pull on Motor Wires to ensure they are connected properly.

Connect the **RED** PCBA wire to the terminal on the motor's top right side.
NOTE - Pull on Motor Wires to ensure they are connected properly.

Connect the **BLUE** PCBA wire to the terminal on the bottom right of the motor.
NOTE - Pull on Motor Wires to ensure they are connected properly.

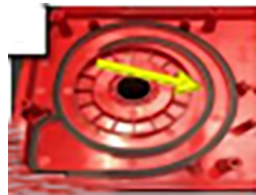
Continued next page

PART 1) Motor and Connector Plate Assembly



STEP 1:
Obtain (1) Y-Strap (22-56-0061)
and secure the wire's longest leg
to the motor clip.

Pull on the Yellow Ground Wire to
ensure it is connected properly.



STEP 2: Obtain (1) Plate Connector.
Ensure the tank seal and exhaust seals are present
and complete with no gaps.



STEP 3: Obtain (1) Bottom Isolator (31-55-0017)
and secure it onto the connector plate.

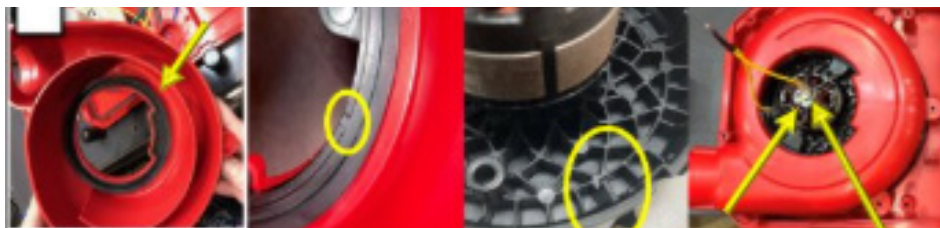


STEP 4: Place (1) Motor and secure it into the
Connector Plate and pass to the next station.

PART 2) Connector Plate and Volute Assembly



STEP 1: Obtain the previously assembled
Connector Plate and Motor Assembly



STEP 2: Obtain (1) Volute, Exhaust and ensure (1) Top, Isolator (31-55-0019) is installed. Set the volute
assembly into place over the motor as shown. Make sure the notch in the isolator matches up correctly with the
notch on the motor. The terminal ground wire should be in the 1 o'clock position as shown.