



SERVICE PARTS LIST

BUL.54-08-0651

3/8" ELECTRIC DRILL

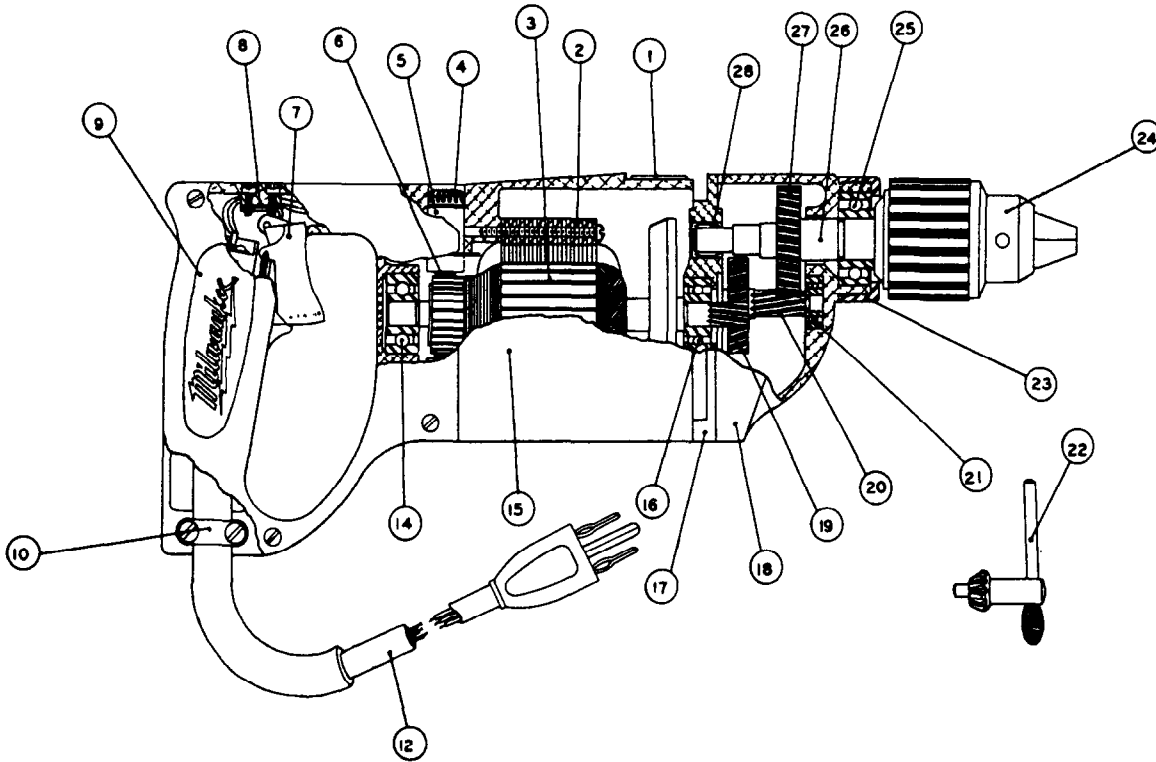
REVISED BUL 650-2 DATE FEB. '68

Catalog No. 0890

Starting Serial No. **50-7001**

WIRING INSTR.

Both Model and Serial No. must be furnished to obtain correct parts.



**CORRECTS AND SUPERCEDES
SERVICE BULLETIN 650-2
DATED 4/8/58**

FIG.	PART NO.	DESCRIPTION OF PART
1	12-98-0800	Name Plate
2	18-42-1040	Field Assembly
3	16-42-1195	Armature Assembly
4	23-44-0060	Brush Retaining Screw
5	22-22-0080	Brush Holder Assembly
6	22-18-0100	Carbon Brush Assembly
7	23-66-0230	Switch
8	45-36-0110	Switch Spacer
9	28-20-3141	Handle Cover
10	28-17-0400	Cord Clamp Strap
12	22-64-0170	Cord Set
14	02-04-0970	Ball Bearing (Comm. End)
15	28-50-4481	Motor Housing

ILLUSTRATED PARTS

FIG.	PART NO.	DESCRIPTION OF PART
16	02-04-0940	Ball Bearing (Pinion End)
17	28-28-0581	Diaphragm
18	28-14-0681	Gear Case
(2)	19	32-40-1241 Intermediate Gear
(2)	20	36-66-2701 Intermediate Pinion Shaft
(2)	21	02-04-0640 Ball Bearing
22	48-66-3280	Chuck Key
23	42-52-0071	Bearing Cap
24	48-66-0840	Chuck (1/2-20 Thread)
25	02-04-1560	Ball Bearing
26	38-50-2551	Spindle
27	32-75-2001	Spindle Gear
28	02-50-2110	Needle Bearing

MISCELLANEOUS PARTS NOT SHOWN

PART NO.	DESCRIPTION OF PART
02-50-1640	Needle Bearing
43-62-0161	Handle
44-90-0130	Handle Ring
06-42-0800	Woodruff Keys (3)
06-81-8400	4-40x1/4" Rd. Hd. Name Plate Scs. (Sems) (2)
06-81-5800	6-32x5/16" Fil. Hd. Sems Switch Mtg. Scs. (2)
23-86-0110	Brush Holder Insul. Washer (2)
23-16-0085	Switch Insulator

PART NO.	DESCRIPTION OF PART
06-81-6150	8-32x1/2" Fil. Hd. Cord Clamp Strap Scs. (Sems) (2)
06-81-8625	6-32x1/4" Rd. Hd. Ground Screw (Brass) (Sems)
06-81-6350	8-32x1" Fil. Hd. Gear Case Screws (Sem)
06-81-6650	8-32x1-3/4" Fil. Hd. Gear Case Screws (Sem) (2)
06-81-6600	8-32x1-3/4" Fil. Hd. Field Screws (Sems) (2)
06-83-2650	1/4-20x3/8 Hd'less Brush Holder Set Screws (2)
06-81-3700	8-32x7/8" Oval Hd. Handle Cover Screws (4)
48-03-0010	Attachment Plug Adaptor

Numbers in brackets indicate number required.