



**BOSCH**

# Angle Grinder

----- | 0 601 323 439

---

## Table of Content

Spare parts list.....	2
Illustration - Type.....	4

**Spare parts list**

Item	Part Number	Description	Illustration
1	1 605 108 119	Motor Housing BLUE	1
2	1 604 336 008	Brush Holder	1
3	1 604 220 099	Field 115V	1
3/8	1 901 350 003	Terminal lug 1,5-4x4	1
4	1 604 011 135	Armature 110-115V	1
6	1 604 652 015	Spiral Spring	1
8	1 605 500 089	Sealing cap BLUE	1
9	1 605 132 093	Handle	1
10/10	2 916 091 118	Sealing washer DIN 85-AM 4x8-4.8	1
12	3 600 703 011	Grommet Ø9,2-Ø12x120 MM	1
13	1 604 460 133	Power supply cord USA/CDN 2,15m 2 x 2,08mm SJ 14/2	1
15	1 601 302 013	Fastening Clamp	1
17	1 601 037 006	Cover Plate	1
20	1 605 808 054	Bearing cover	1
21	1 600 102 012	Cover Disc	1
22	1 603 523 092	Grinding Spindle 5/8"-UNC-2A	1
23	1 600 108 055	Sealing disk	1
27	2 600 910 001	Needle-Roller Bearing Ø14 MM	1
28	1 600 206 020	Rubber Ring 7 MM WIDE	1
29	1 600 502 017	Air-Deflector Ring	1
30	2 916 660 017	Spring retaining ring DIN 472 38X1,5MM	1
32	1 600 290 008	Rotary shaft lip seal WHITE	1
34	1 600 190 004	Shim 0,1 MM THICK	1
34	1 600 190 005	Shim 0,2 MM THICK	1
35	1 601 030 022	Tab Washer	1
36	1 600 206 015	Rubber Ring	1
38	1 601 110 003	Manufacturer's nameplate	1
39	1 601 110 358	Reference Plate CAUTION	1
43	1 601 110 058	Reference Plate DOUBLE INSULATION	1
50	1 900 905 227	groove ball bearing 6203-2 Z DIN 625	1
52	1 900 905 234	groove ball bearing 15x35x11	1
53	1 600 900 029	groove ball bearing	1
54	2 910 021 118	Socket head cap screw DIN 84-AM4x8-8.8	1
55	2 910 021 050	Socket head cap screw DIN 84-AM3x8-8.8	1

**Spare parts list**

Item	Part Number	Description		Illustration
57	2 910 011 157	Socket head cap screw	DIN 84-AM5x15-5.8	1
58	2 910 211 220	Tapping Screw	DIN 7971-B 3,9x19	1
59	1 613 435 009	Tapping Screw	ST-4,8x57,5-TORX,T20	1
60	2 910 211 036	Tapping Screw	DIN 7971-ST4,8x25-F	1
61	2 910 011 162	Socket head cap screw	DIN 84-AM5x20-5.8	1
62	1 603 300 018	Hex Nut		1
63	1 603 435 006	Tapping Screw	B4,8x90 MM	1
65	1 600 150 006	Spring Washer	DIN 137-A4	1
66	2 910 021 116	Socket head cap screw	DIN 84-AM4x6-8.8	1
66	2 910 021 122	Socket head cap screw	DIN 84-AM4x12-8.8	1
69	2 910 211 011	Tapping Screw	DIN 7971-BZ3,5x13	1
86	1 601 110 073	Sticker	DOUBLE INSULATION	1
91	2 916 060 006	Spring Washer	DIN 137-A5-FST	1
100	1 600 390 011	Grooved Ring		1
150	3 604 477 009	End Splice		1
650/6	1 608 039 008	Storage Ledge		1
650/7	2 910 021 196	Socket head cap screw	DIN 84-AM6x15-8.8	1
800	1 607 014 103	Carbon-Brush Set		1
803	1 604 440 004	Connecting Cable		1
804	1 606 333 223	Crown Gear	Z=51	1
805	1 606 333 224	Bevel Gear	Z=10	1
813	1 607 000 161	Parts Set		1
816	1 607 000 906	Parts Set		1
817	1 607 000 229	Assembly Of Service Parts		1
888	1 601 11A 3H3	Nameplate		1
10/1	1 607 200 064	Switch		2
55/1	2 910 211 021	Tapping Screw	DIN 7971-ST3,9x22-F	2
815	1 605 132 083	Handle	BLUE	2

Illustration - Type - E

Typ 0 601 323 4 . .

Stand 87-02  
Issue 94-09

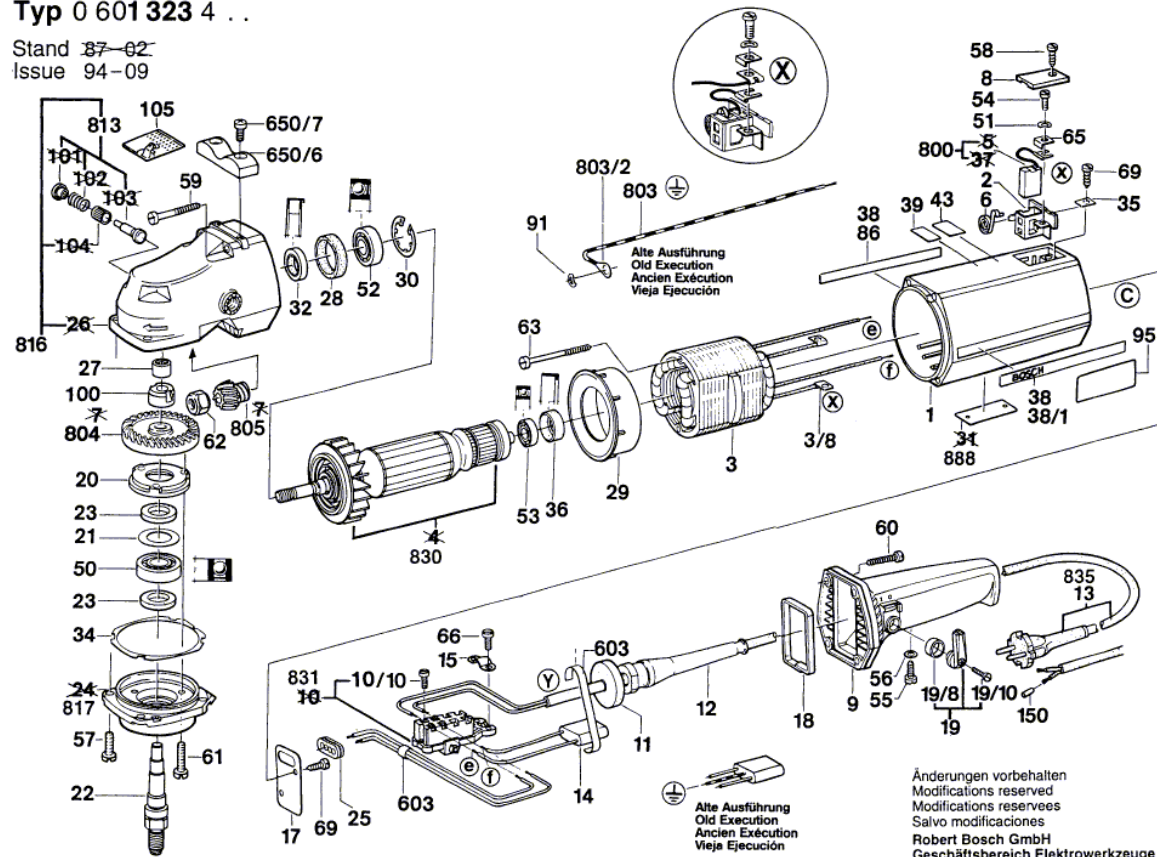
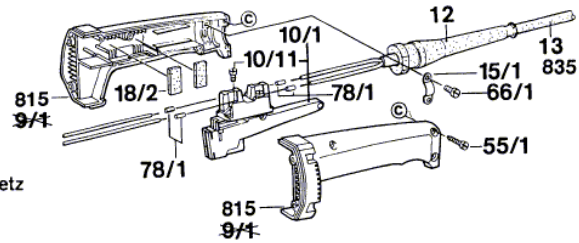
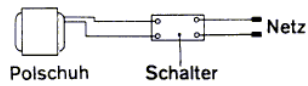


Illustration - Type - E

Typ 0 601323 4 . .

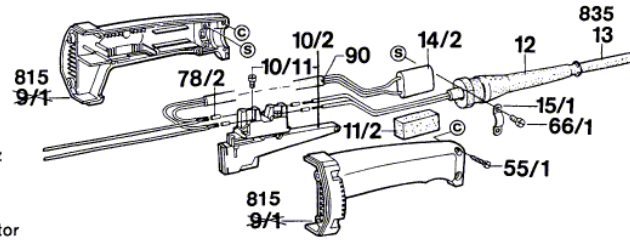
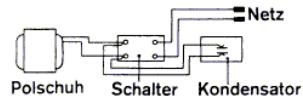
Stand 87-02  
Issue 94-09

Typ 1323 439



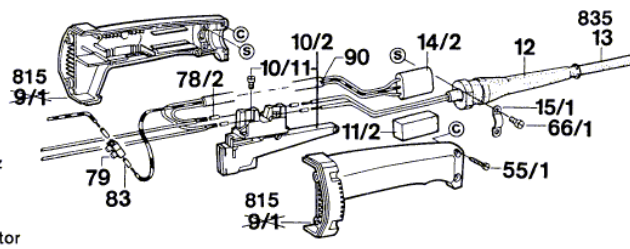
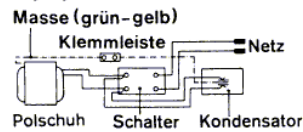
Typ . . 448  
465

Neue Ausführung  
New Execution  
Nouvelle Exécution  
Nueva Ejecución



Typ . . 448  
465

Alte Ausführung  
Old Execution  
Ancien Exécution  
Vieja Ejecución



Änderungen vorbehalten  
Modifications reserved  
Modifications réservées  
Salvo modificaciones