



SERVICE PARTS LIST

BUL. 54-08-0102

1/4" ELECTRIC DRILL

REVISED BUL
54-08-0101

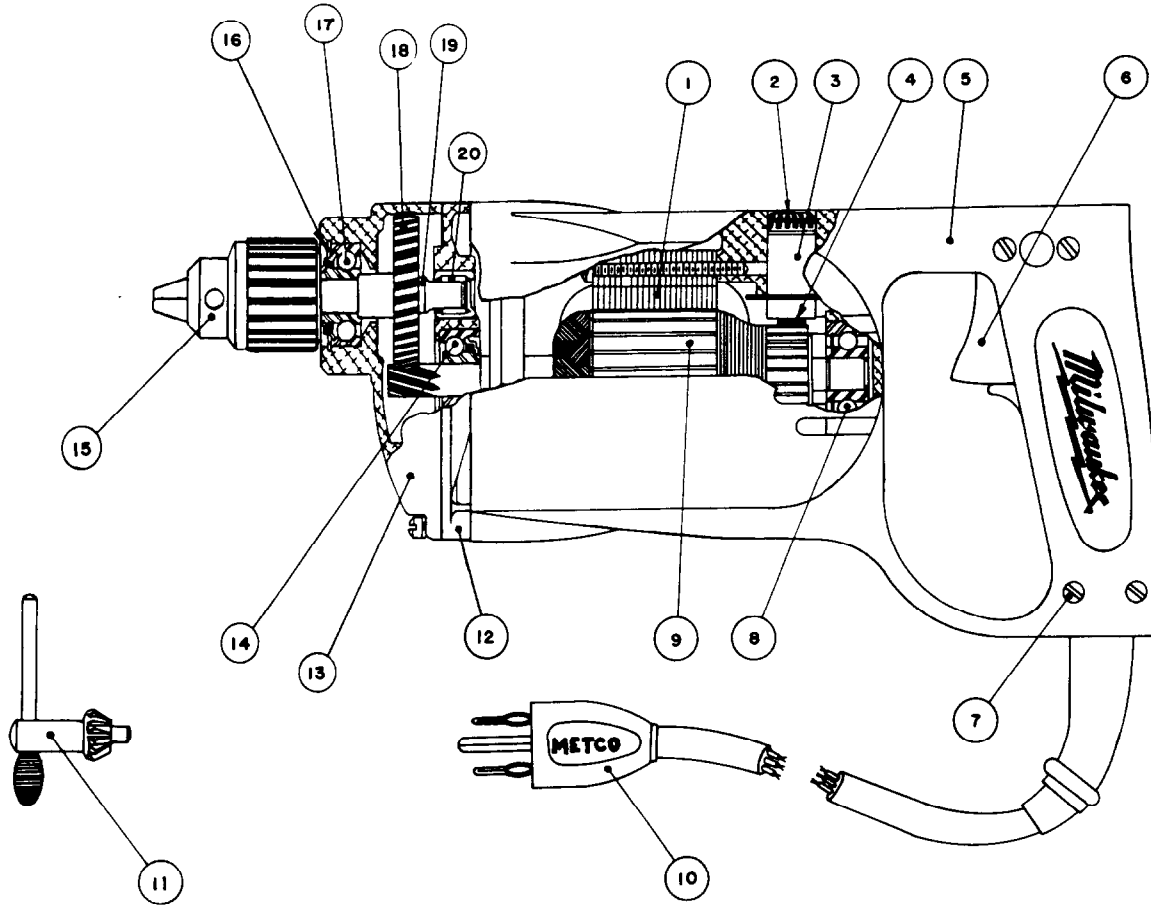
DATE
May '69

Catalog No. 0600

Starting
Serial No. **9-56412**

WIRING INSTR.
58-01-0180

Both Model and Serial No. must be furnished to obtain correct parts.



230 V
16-46-1150 Armature
18-46-1040 Field

ILLUSTRATED PARTS

FIG.	PART NO.	DESCRIPTION OF PART	NO. REQ.	FIG.	PART NO.	DESCRIPTION OF PART	NO. REQ.
1	18-42-1040	Field Assembly		12	28-28-0821	Diaphragm	
2	23-44-0060	Carbon Brush Ret. Screw	(2)	13	28-14-0841	Gear Case	
3	22-22-0080	Brush Holder Assembly	(2)	14	02-04-0970	Ball Bearing (Pinion End)	
4	22-18-0100	Carbon Brush Assemblies	(2)	15	48-66-0260	Chuck, 3-Jaw (3/8-24 Thread)	
5	28-50-4682	Motor Housing		16	34-80-2200	Retaining Ring	
6	23-66-0230	Switch Assembly		17	02-04-1060	Ball Bearing	
7	45-04-0100	Cord Ret. Screws	(2)	18	32-75-1741	Spindle Gear	
8	02-04-0970	Ball Bearing (Comm. End)		19	38-50-3151	Spindle	
9	16-42-1170	Armature Assembly		20	02-50-2110	Needle Bearing	
10	22-64-0180	Cord Set, 3 Wire, 3 Prong Plug					
11	48-66-3200	Chuck Key					

MISCELLANEOUS PARTS NOT SHOWN

PART NO.	DESCRIPTION OF PART	NO. REQ.	PART NO.	DESCRIPTION OF PART	NO. REQ.
26-16-0390	Switch Insulator		06-42-0800	Woodruff Key	
06-81-8625	6-32x1/4" Rd. Hd. Sem (Brass) Ground Screw		06-81-8400	4-40x1/4" Name Plate Screws	(2)
06-81-6300	8-32x7/8" Fil. Hd. Sem Gear Case Screw		12-98-0500	Name Plate	
06-81-6500	8-32x1-3/8" Fil. Hd. Sem Gear Case Scs. (2)	(2)	06-81-8650	6-32x1/4" Rd. Hd. Sem Switch Bracket Scr. (2)	(2)
06-81-6600	8-32x1-3/4" Fil. Hd. Field Screws	(2)	06-81-3400	6-32x1/4" Oval Hd. Switch Locating Scs. (2)	(2)
06-65-0825	1/8" x 1/2" Type 5 Groove Pin		42-36-0170	Switch Bracket	
23-86-0110	Brush Holder Insul. Washer (Fiber)	(2)	06-83-2670	1/4-20 x 1/2" Soc. Hd. Set Scr. (Brush Holder) (2)	(2)
★ 48-66-4080	Rubber Key Holder		06-97-1800	Lock Washer	(4)