



# SERVICE PARTS LIST

**BUL. 54-08-0101**

## 1/4" ELECTRIC DRILL

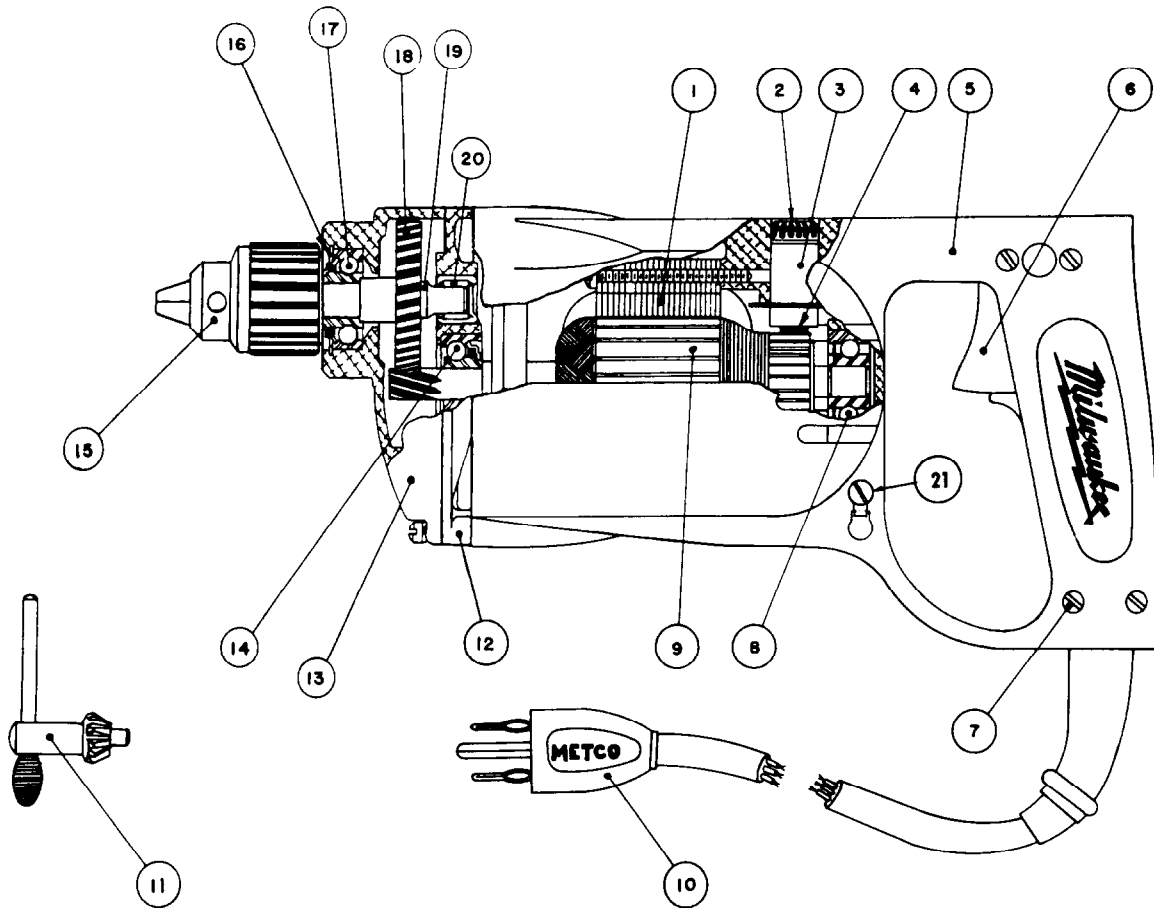
REVISED BUL 609-11 DATE May '68

**Catalog No. 0600**

Starting Serial No. **9-32301**

WIRING INSTR. **58-01-0180**

**Both Model and Serial No. must be furnished to obtain correct parts.**



230 V  
16-46-1150 Armature  
18-46-1040 Field

### ILLUSTRATED PARTS

FIG.	PART NO.	DESCRIPTION OF PART	NO. REQ.	FIG.	PART NO.	DESCRIPTION OF PART	NO. REQ.
1	18-42-1040	Field Assembly		12	28-28-0821	Diaphragm	
2	23-44-0060	Carbon Brush Ret. Screw	(2)	13	28-14-0841	Gear Case	
3	22-22-0080	Brush Holder Assembly	(2)	14	02-04-0970	Ball Bearing (Pinion End)	
4	22-18-0100	Carbon Brush Assemblies	(2)	15	48-66-0260	Chuck, 3-Jaw (3/8-24 Thread)	
5	28-50-4682	Motor Housing		16	34-80-2200	Retaining Ring	
6	23-66-0230	Switch Assembly		17	02-04-1060	Ball Bearing	
7	45-04-0100	Cord Ret. Screws	(2)	18	32-75-1741	Spindle Gear	
8	02-04-0970	Ball Bearing (Comm. End)		19	38-50-3151	Spindle	
9	16-42-1170	Armature Assembly		20	02-50-2110	Needle Bearing	
10	22-64-0180	Cord Set, 3 Wire, 3 Prong Plug		21	42-70-0080	Key Clip	
11	48-66-3200	Chuck Key					

### MISCELLANEOUS PARTS NOT SHOWN

PART NO.	DESCRIPTION OF PART	NO. REQ.	PART NO.	DESCRIPTION OF PART	NO. REQ.
*06-81-8650	6-32x1/4 Rd. Hd. Key Clip Screw		06-42-0800	Woodruff Keys	
06-81-8625	6-32x1/4" Rd. Hd. Sem (Brass) Ground Screw		06-81-8400	4-40x1/4" Name Plate Screws	(2)
06-81-6300	8-32x7/8" Fil. Hd. Sem Gear Case Screw		12-98-0500	Name Plate	
06-81-6500	8-32x1-3/8" Fil. Hd. Sem Gear Case Scs.	(2)	06-81-8650	6-32x1/4" Rd. Hd. Sem Switch Bracket Scr.	(2)
06-81-6600	8-32x1-3/4" Fil. Hd. Field Screws	(2)	06-81-3400	6-32x1/4" Oval Hd. Switch Locating Scs.	(2)
06-65-0825	1/8" x 1/2" Type 5 Groove Pin		42-36-0170	Switch Bracket	
23-86-0110	Brush Holder Insul. Washer (Fiber)	(2)	06-83-2670	1/4-20 x 1/2" Soc. Hd. Set Scr. (Brush Holder)	(2)
*48-03-0010	Plug Adapter		*06-97-1800	Lock Washer	(4)
			*26-16-0390	Switch Insulator	