



SERVICE PARTS LIST

BULLETIN NO.
54-05-0126

SPECIFY CATALOG NO. AND SERIAL NO. WHEN ORDERING PARTS		REVISED BULLETIN 54-05-0125	DATE May '82
REVERSING HEAVY-DUTY DRAIN CLEANER			
CATALOG NO. 0566-1		STARTING SERIAL NO. 496-20000	
CAT. NO. 0566-6		START SER. NO. 496-20000	BILINGUAL LABEL 10-98-6120

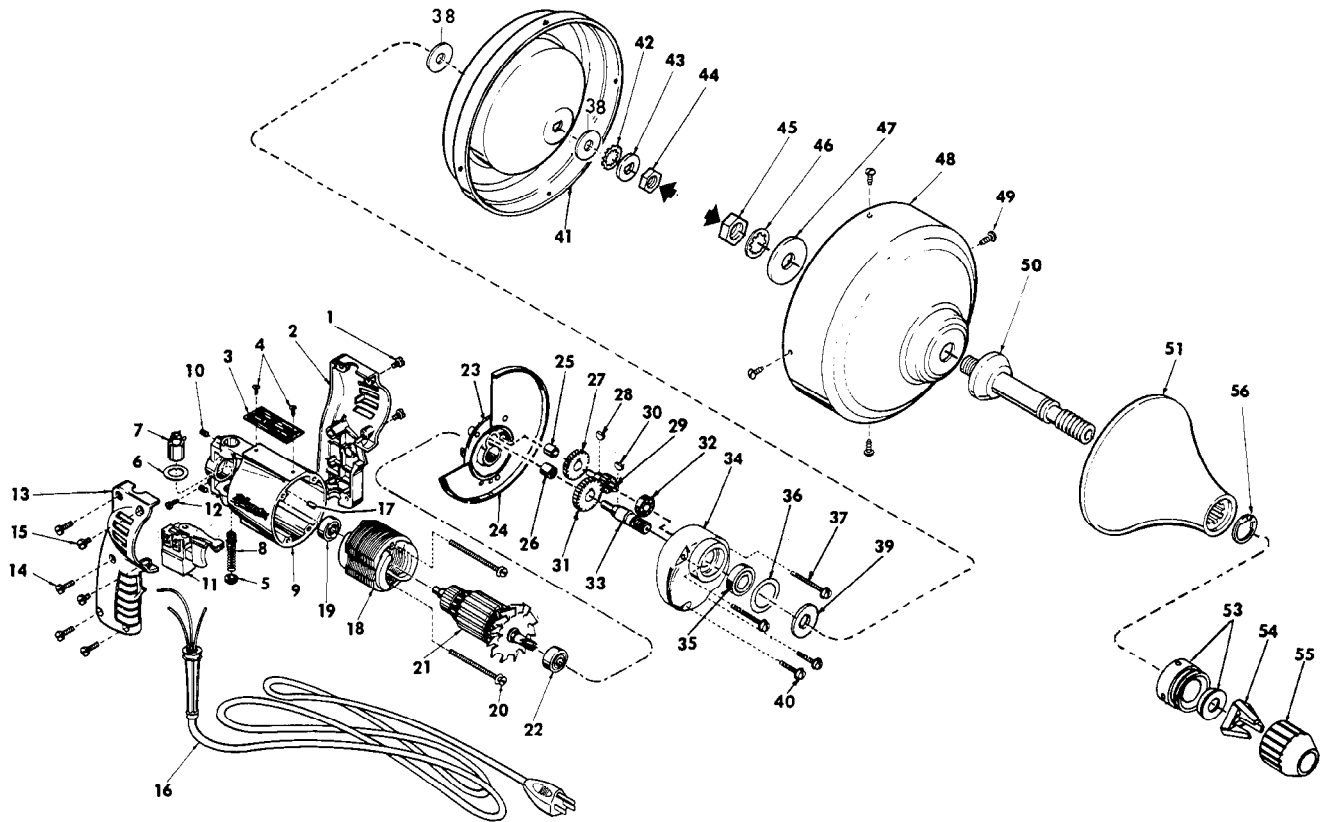


FIG.	PART NO.	DESCRIPTION OF PART	NO. REQ.	FIG.	PART NO.	DESCRIPTION OF PART	NO. REQ.
★ 1	06-81-0453	8-32x3/8 Pan Hd. Screw	(2)	30	06-42-0800	Woodruff Key	(1)
★ 2	31-44-0626	L.H. Handle Half	(1)	31	32-75-1101	Spindle Gear	(1)
3	12-99-0022	Nameplate Blank	(1)	32	02-04-0640	Ball Bearing	(1)
4	06-85-0200	Nameplate Screws	(2)	33	38-50-4001	Spindle	(1)
5	23-44-0020	Brush Retaining Cap	(2)	34	28-14-0363	Gear Case	(1)
6	23-86-0105	Insulating Washer	(2)	35	02-04-1020	Ball Bearing	(1)
7	22-22-1251	Brush Holder Assy.	(2)	36	34-80-1400	Retaining Ring	(1)
8	22-18-0155	Carbon Brush Assy.	(2)	37	06-81-6575	8-32x1-5/8 Fil. Hd. Sems	(2)
★ 9	28-50-6096	Motor Housing (Incl. Fig. No. 17)	(1)	★ 38	45-88-7730	Washer	(2)
10	06-83-2430	10-32x1/4 Hdls. Skt. Screw	(2)	39	45-36-0621	Spacer	(1)
11	23-66-0797	Rev. Speed Control Switch	(1)	40	06-81-6350	8-32x1 Fil. Hd. Sems	(2)
12	06-81-8625	6-32x1/4 Ground Screw	(1)	★ 41	43-11-0021	Upper Drum Section	(1)
★ 13	31-44-0616	R.H. Handle Half	(1)	42	06-97-4130	Lock Washer	(1)
★ 14	06-95-0220	8-18x3/4 Thread Form Screw	(4)	43	45-88-7235	"D" Hole Washer	(1)
★ 15	06-81-0453	8-32x3/8 Pan Hd. Screw	(2)	44	06-55-2450	3/8-24 Hex Nut	(1)
16	22-64-0665	Cord Set	(1)	45	06-55-3760	Hex Nut	(1)
17	45-30-0120	Ball Bearing Ret. Slug	(1)	46	06-97-3010	Internal Lockwasher	(1)
18	18-22-1060	Field	(1)	47	45-88-7175	Wrought Washer	(1)
19	02-04-0740	Ball Bearing	(1)	★ 48	43-11-0031	Lower Drum Section	(1)
20	06-81-5950	6-32x1-7/8 Fil. Hd. Sems	(2)	49	06-85-0380	6-20x3/8 Phillips Pan Hd. Tek Screw	(4)
21	16-22-1221	Armature Assy.	(1)	50	38-50-5055	Spindle Assembly	(1)
22	02-04-0740	Ball Bearing	(1)	51	43-54-0320	Hand Guard Assembly	(1)
23	28-28-0221	Diaphragm	(1)	52	48-66-0270	Chuck (Fig. Nos. 53 thru 55)	(1)
24	45-12-0210	Shield	(1)	53	42-30-0270	Chuck Body and Thrust Plug	(1)
25	02-50-1210	Needle Bearing	(1)	54	42-77-0010	Chuck Collet	(1)
26	02-50-1640	Needle Bearing	(1)	55	45-22-0310	Chuck Sleeve	(1)
27	32-40-1121	Intermediate Gear	(1)	56	34-60-2310	Retaining Ring	(1)
28	06-42-0400	Woodruff Key	(1)	▶ 57	12-98-7082	Caution Plate (Not Shown)	(1)
29	36-66-0851	Intermediate Pinion Shaft	(1)				

▶ Omit for Canadian Tools