



SERVICE PARTS LIST

BULLETIN NO.
54-42-5725

SPECIFY CATALOG NO. AND SERIAL NO. WHEN ORDERING PARTS		REVISED BULLETIN	DATE
12 VOLT CORDLESS SCREWDRIVER			Dec. '96
CATALOG NO. 0456-20	STARTING SERIAL NO. 912A	WIRING INSTRUCTION 58-01-1605	

EXAMPLE:

00	0
----	---

 Component Parts (Small #)
Are Included When Ordering
The Assembly (Large #).

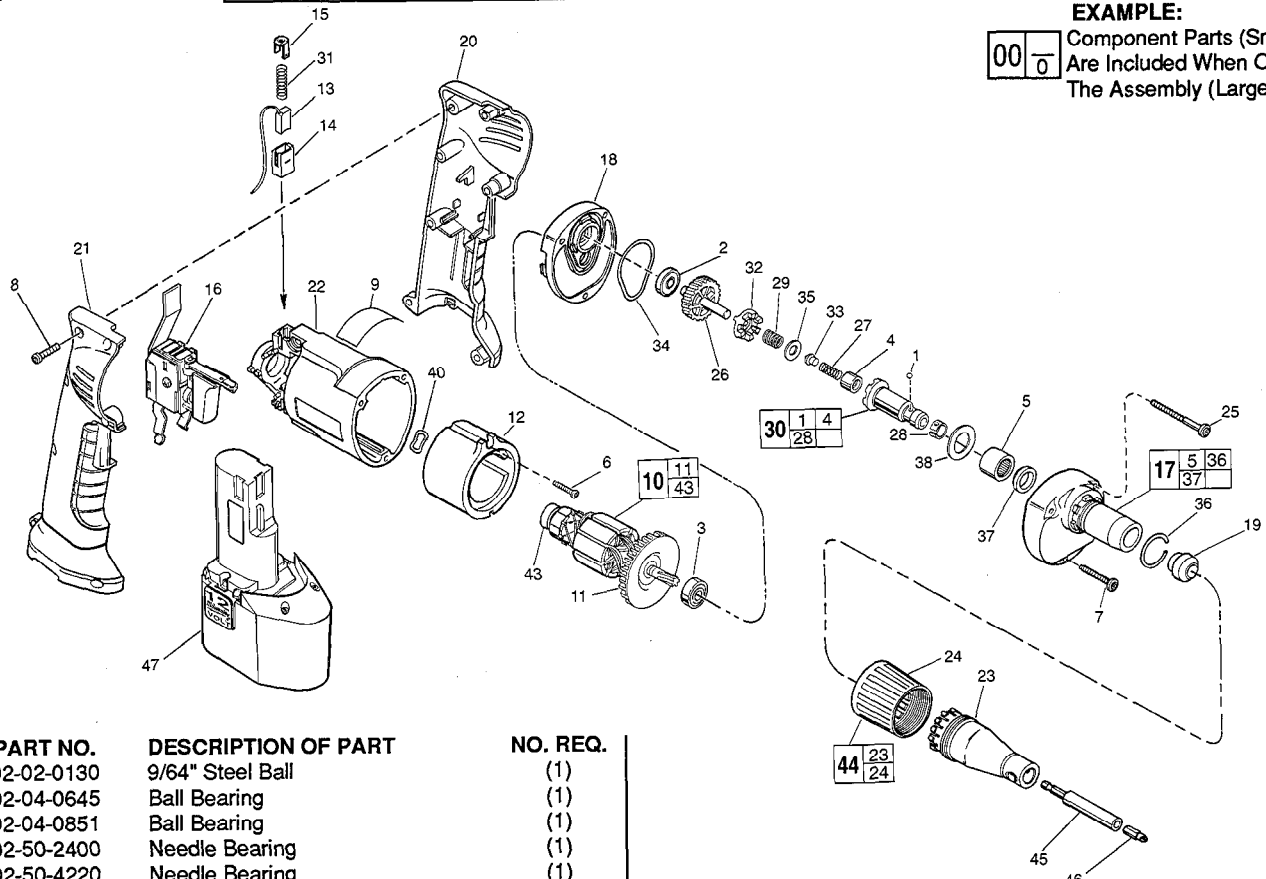


FIG.	PART NO.	DESCRIPTION OF PART	NO. REQ.
1	02-02-0130	9/64" Steel Ball	(1)
2	02-04-0645	Ball Bearing	(1)
3	02-04-0851	Ball Bearing	(1)
4	02-50-2400	Needle Bearing	(1)
5	02-50-4220	Needle Bearing	(1)
6	06-82-7261	6-19 x 11/16" Pan Hd. Slit. Plast. T-20	(1)
7	06-82-7320	7-18 x 1-1/4" Pan Hd. Slit. Plast. T-20	(1)
8	06-82-9207	6-32 x 11/16" Pan Hd. Slit. Plast. T-20	(7)
9	12-20-0456	Service Nameplate Kit	(1)
10	16-01-0050	Armature	(1)
11	22-84-0830	Fan Assembly	(1)
12	18-01-0040	Field	(1)
13	22-18-0840	Brush Assembly - Top	(1)
13	22-18-0845	Brush Assembly - Bottom	(1)
14	22-20-0860	Brush Tube	(2)
15	22-32-0400	Brush Spring Clip	(2)
16	23-66-2300	Speed Control Switch	(1)
17	14-30-0435	Gear Case Assembly	(1)
18	25-28-1990	Diaphragm	(1)
19	30-37-0046	Nose Guide	(1)
20	31-44-1880	Left Handle Half	(1)
21	31-44-1885	Right Handle Half	(1)
22	31-50-1080	Motor Housing	(1)
23	31-51-0090	Locator	(1)
24	31-58-0510	Locator Sleeve	(1)
25	06-82-7368	7-18 x 1-3/4" Pan Hd. Slit. Plast T-20	(2)
26	32-10-0456	Clutch Gear Assembly	(1)
27	40-50-0095	Separator Spring	(1)
28	40-50-0510	Retaining Spring	(1)
29	40-50-8515	Bias Spring	(1)
30	42-66-0710	Clutch Chuck Assembly	(1)
31	40-50-8775	Brush Spring	(2)
32	42-70-0310	Drive Clutch	(1)
33	44-60-0505	Thrust Pin	(1)
34	43-44-0940	Gasket	(1)
35	45-88-0555	Thrust Washer	(1)
36	44-90-0401	Locator Ring	(1)
37	45-06-0570	Oil Seal	(1)
38	45-88-8350	Stop Washer	(1)
40	45-88-5615	Wavy Spring Washer	(1)

FIG.	PART NO.	DESCRIPTION OF PART	NO. REQ.
43	02-04-5130	Ball Bearing	(1)
44	49-26-1035	Locator Assembly	(1)
45	48-32-3065	Magnetic Bit Holder	(1)
46	48-32-1050	Insert Bit - #2 Phillips	(1)
47	48-11-0200	12 Volt Battery	(1)
	10-15-9485	Warning Label	(1)
	10-15-9490	Logo Label	(1)

FIG. LUBRICATION

- 10 1/64 Oz. On Each Side Of Armature Pinion At Clutch Gear.
- 17 3/16 Oz. In Pinion Pocket Of Gear Case.
- 26 1/64 Oz. In The Clutch Pockets Of The Clutch Gear.
- 29 1/64 Oz. Type "E" Grease, No. 49-08-4122, On Bias Spring.

Apply A Light Film Of "E" Grease To Ball And Needle Bearing Pockets Of The Diaphragm And Gear Case Prior To Pressing Bearings. Apply A Light Film Of "E" Grease To The Lead Chamfer Of Clutch Chuck, Thrust Pin And Separator Spring Prior To Assembly.

FIG. NOTES

- 6 Torque To 20 In./Lbs.
- 7,25 Torque To 15-20 In./Lbs.
- 8 Torque To 16 In./Lbs.
- 12 Press chamfer end first.
- 13,14,22 Slot on brush tube must be assembled on the same side as slot on motor housing. Brush assemblies must be inserted with the wire laying inside of brush tube slot. Brush must slide freely inside brush tube.
- 14,15 Brush spring clip must snap into detent of brush tube.

MILWAUKEE ELECTRIC TOOL CORPORATION
13135 W. LISBON RD., BROOKFIELD, WI 53005