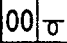




# SERVICE PARTS LIST

**BULLETIN NO.**  
**55-06-1050**

SPECIFY CATALOG NO. AND SERIAL NO. WHEN ORDERING PARTS		REVISED BULLETIN	DATE
12 VOLT 3/8" CORDLESS DRILL			June '95
CATALOG NO. 0436-4	STARTING SERIAL NO. 848A	WIRING INSTRUCTION 58-01-1605	

**EXAMPLE:**  
 Component Parts (Small #) Are Included  
 When Ordering The Assembly (Large #).

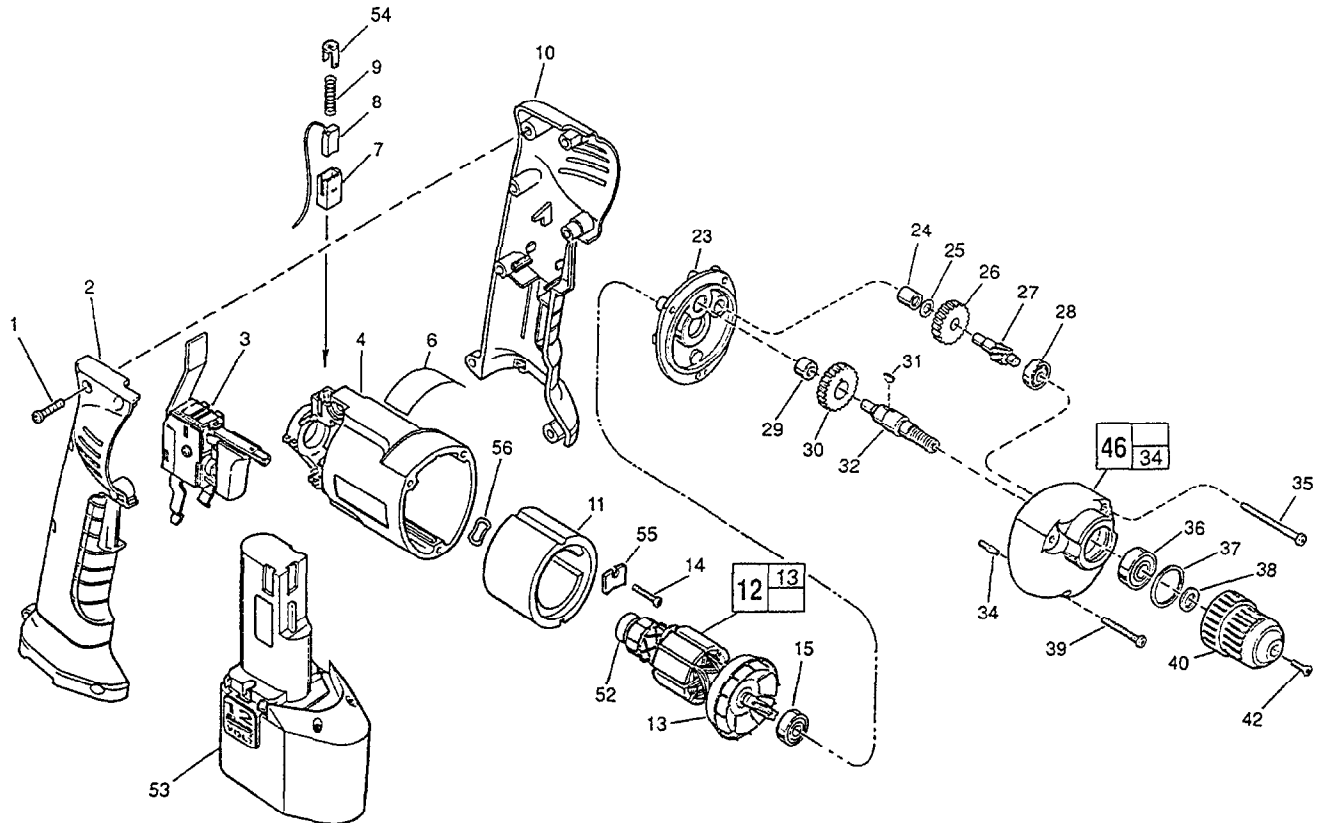


FIG.	PART NO.	DESCRIPTION OF PART	NO. REQ.
	1	6-32 x 11/16" Pan Hd. Slit. Plast. T-20	(7)
	2	Right Handle Half	(1)
	3	Speed Control Switch	(1)
	4	Motor Housing	(1)
	6	Service Nameplate Kit	(1)
	7	Brush Tube	(2)
	8	Brush Assembly - Top	(1)
		Brush Assembly - Bottom	(1)
	9	Brush Spring	(2)
	10	Left Handle Half	(1)
	11	Field	(1)
	12	Armature	(1)
	13	Fan Assembly	(1)
	14	6-19 x 11/16" Pan Hd. Slit. Plast. T-20	(1)
	15	Ball Bearing	(1)
	23	Diaphragm	(1)
	24	Needle Bearing	(1)
	25	Heat Treated Washer	(1)
	26	Intermediate Gear	(1)
	27	Intermediate Pinion Shaft	(1)
	28	Ball Bearing	(1)
	29	Needle Bearing	(1)
	30	Spindle Gear	(1)
	31	Woodruff Key	(1)
	32	Reversing Spindle	(1)
	34	1/8 x 1/2" Groove Pin 5	(1)
	35	7-18 x 1-3/4" Pan Hd. Slit. Plast. T-20	(2)
	36	Ball Bearing	(1)
	37	Retaining Ring	(1)
	38	Chuck Washer	(1)
	39	7-18 x 1-1/8" Pan Hd. Slit. Plast. T-20	(1)
	40	3/8" Chuck	(1)
	42	Chuck Screw - L.H. Thread	(1)

FIG.	PART NO.	DESCRIPTION OF PART	NO. REQ.
	46	14-30-0620 Gear Case Assembly	(1)
	52	02-04-5130 Ball Bearing	(1)
	53	12 Volt Battery - Select From Catalog	(1)
	54	22-32-0400 Brush Spring Clip	(2)
	55	44-66-6140 Mounting Plate	(1)
	56	45-88-5615 Wavy Spring Washer	(1)
		10-15-9490 Logo Label	(1)

**FIG. LUBRICATION**  
 46 1/2 Oz. Type "E" Grease, No. 49-08-4122. Place near intermediate shaft ball bearing in gear case.

**FIG. NOTES**  
 4,7,8 Slot on brush tube must be assembled on the same side as slot on motor housing. Brush assemblies must be inserted with the wire laying inside of brush tube slot. Brush must slide freely inside brush tube.  
 7,54 Brush spring clip must snap into detent of brush tube.  
 11 Press chamfer end first.  
 15 Seal towards armature.  
 24,29 Press flush to casting surface.  
 35,39 Torque to 15-20 In./Lbs.  
 36 Seal towards chuck.

**MILWAUKEE ELECTRIC TOOL CORPORATION**  
 13135 W. LISBON RD., BROOKFIELD, WI 53005