



# SERVICE PARTS LIST

**BULLETIN NO.**  
**54-24-0051**

SPECIFY CATALOG NO. AND SERIAL NO. WHEN ORDERING PARTS		REVISED BULLETIN	DATE
<b>12 VOLT PISTOL HAMMER DRILL</b>		54-24-0050	May '96
CATALOG NO. <b>0420-1</b>	STARTING SERIAL NO. <b>851B</b>	WIRING INSTRUCTION <b>58-01-1605</b>	



**EXAMPLE:**  
Component Parts (Small #) Are Included  
When Ordering The Assembly (Large #).

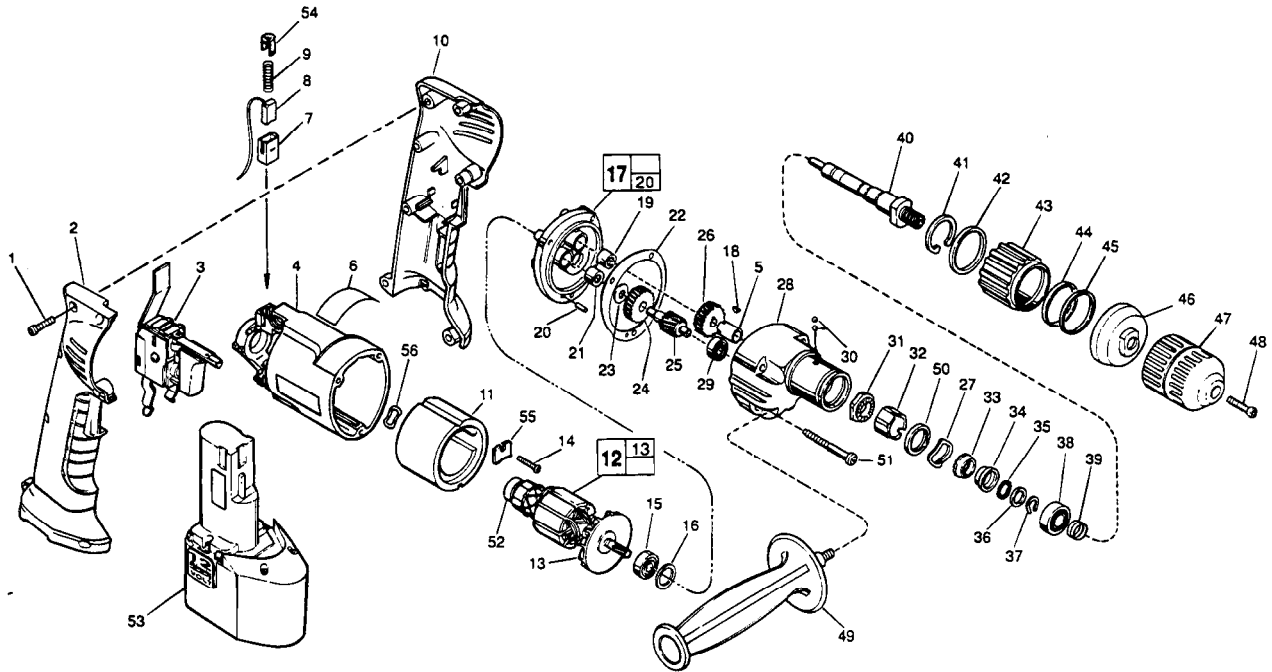


FIG.	PART NO.	DESCRIPTION OF PART	NO. REQ.
	1	06-82-9207 6-32 x 11/16" Pan Hd. Stt. Plast. T-20	(7)
	2	31-44-1885 Right Handle Half	(1)
	3	23-66-2300 Speed Control Switch	(1)
	4	31-50-1080 Motor Housing	(1)
	5	45-36-1260 Gear Spacer	(1)
	6	12-20-1155 Service Nameplate Kit	(1)
	7	22-20-0860 Brush Tube	(2)
	8	22-18-0840 Brush Assembly - Top	(1)
	8	22-18-0845 Brush Assembly - Bottom	(1)
	9	40-50-8840 Brush Spring	(2)
	10	31-44-1880 Left Handle Half	(1)
	11	18-01-0010 Field	(1)
	12	16-01-0010 Armature	(1)
	13	22-84-0830 Fan Assembly	(1)
	14	06-82-7261 6-19 x 11/16" Pan Hd. Stt. Plast. T-20	(1)
	15	02-04-0848 Ball Bearing	(1)
	16	45-88-0355 Fiber Washer	(1)
★	17	14-13-0540 Diaphragm Assembly	(1)
	18	06-42-0400 Woodruff Key	(1)
	19	02-50-1611 Needle Bearing	(1)
★	20	06-65-0880 Ground Pin	(1)
	21	02-50-1640 Needle Bearing	(1)
	22	43-44-0900 Gasket	(1)
	23	45-88-7721 Thrust Washer	(1)
	24	32-40-2260 Intermediate Gear	(1)
	25	36-66-4360 Intermediate Pinion Shaft	(1)
	26	32-75-3175 Spindle Gear	(1)
	27	45-88-0940 Overlap Wave Washer	(1)
★	28	28-14-2105 Gear Case	(1)
	29	02-04-0640 Ball Bearing	(1)
	30	02-02-0180 3/16" Steel Ball	(6)
	31	44-84-0240 Fixed Ratchet	(1)
	32	45-36-1225 Bearing Spacer	(1)
	33	44-84-0235 Rotating Ratchet	(1)
	34	45-36-1215 Shift Spacer	(1)
	35	02-02-0120 1/8" Steel Ball	(15)
	36	45-88-0935 Thrust Washer	(1)
	37	34-60-0920 Retaining Ring	(1)
	38	02-08-0510 Ball Bearing	(1)

FIG.	PART NO.	DESCRIPTION OF PART	NO. REQ.
	39	40-50-0220 Compression Spring	(1)
	40	38-50-5515 Spindle	(1)
	41	34-80-2020 Internal Retaining Ring	(1)
	42	34-40-4040 O-Ring	(1)
	43	31-58-0055 Locking Collar	(1)
	44	34-40-1500 O-Ring	(1)
	45	34-60-2125 Retaining Ring	(1)
	46	45-12-0520 Hammer Dust Shield	(1)
	47	48-66-0400 3/8" Chuck	(1)
★	48	45-04-0755 Chuck Screw	(1)
	49	43-62-0905 Side Handle	(1)
	50	45-36-1255 Flanged Spacer	(1)
	51	06-82-7393 7-18 x 2" Pan Hd. Stt. Plast. T-20	(3)
	52	02-04-5130 Ball Bearing	(1)
	53	48-11-0200 12.0 Volt Battery Pack	(1)
	54	22-32-0400 Brush Spring Clip	(2)
	55	44-66-6140 Mounting Plate	(1)
	56	45-88-5615 Wave Spring Washer	(1)
		10-15-9485 Warning Label	(1)

FIG.	NOTES
1	Torque to 15-20 In./Lbs.
4,7,8	Slot on brush tube must be assembled on the same side as slot on motor housing. Brush assemblies must be inserted with the wire laying inside of brush tube slot. Brush must slide freely inside brush tube.
7,54	Brush spring clip must snap into detent of brush tube.
14	Torque field screw to 15-20 In./Lbs.
15	Press flush to casting surface. Seal towards armature.
19	Press only on end with manufacturer ID.
19,21	Press flush to casting surface.
48	Apply type 242 blue loctite and torque to 40-45 in./lbs.
51	Torque gear case screws to 30-38 In./Lbs.

FIG.	LUBRICATION
28	1/2 oz. type "K" grease, No. 49-08-4161.
31,33	1/2 tsp. type "K" grease, No. 49-08-4161.
34,35	1/4 tsp. type "K" grease, No. 49-08-4161.
42,44	Coat with type "K" grease, No. 49-08-4161.

**MILWAUKEE ELECTRIC TOOL CORPORATION**  
13135 W. LISBON RD., BROOKFIELD, WI 53005