



SERVICE PARTS LIST

BULLETIN NO.
55-06-8025

SPECIFY CATALOG NO. AND SERIAL NO. WHEN ORDERING PARTS			REVISED BULLETIN	DATE
10mm ANGLE DRILL				Aug. 2002
CATALOG NO.	0375-55	STARTING SERIAL NO.	WIRING INSTRUCTION	
		A27A	58-03-0374	

EXAMPLE:
Component Parts (Small #)
Are Included When Ordering
The Assembly (Large #).

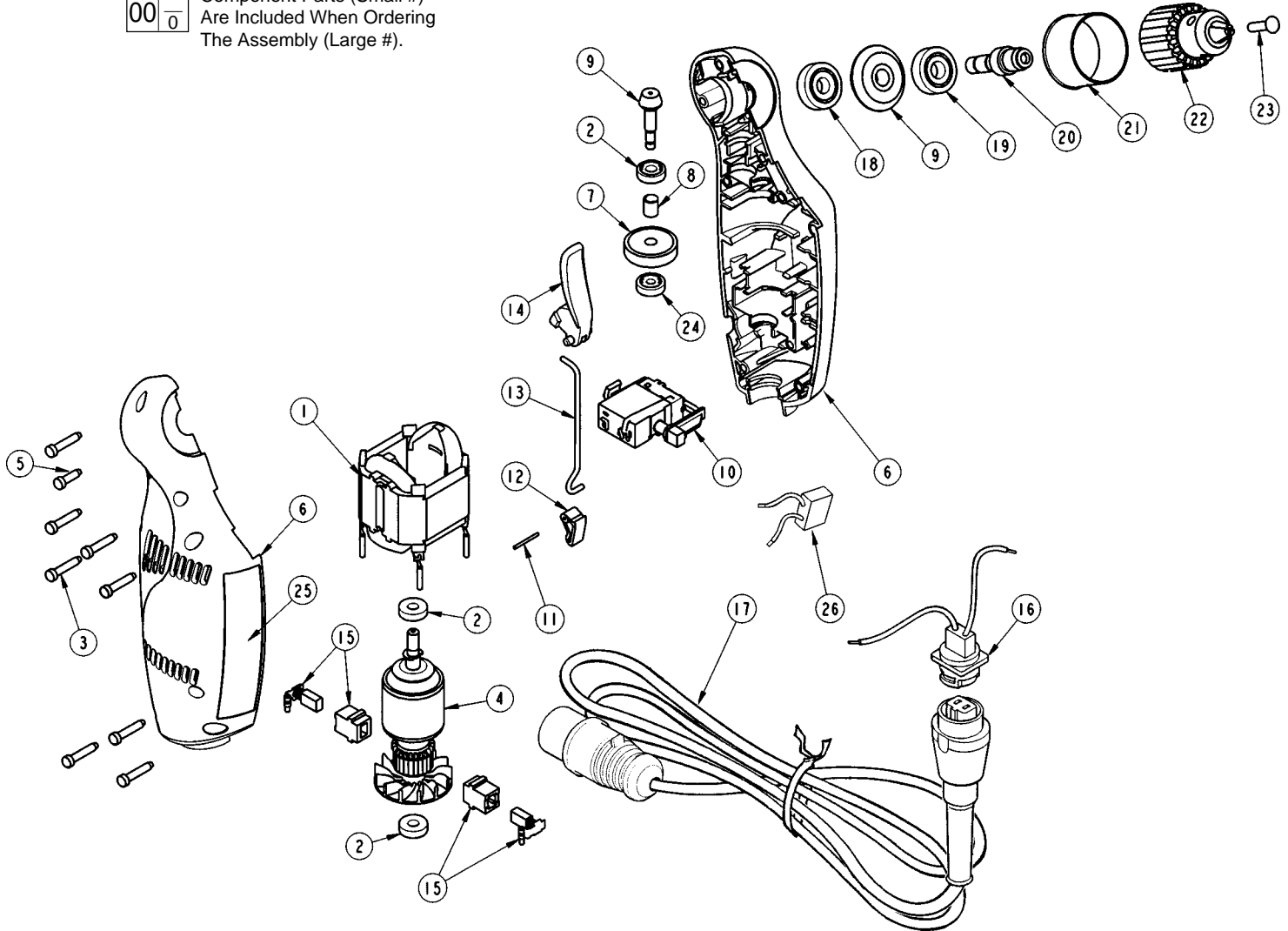


FIG.	PART NO.	DESCRIPTION OF PART	NO. REQ.
	1	18-10-0116 Field	(1)
	2	02-04-0300 Ball Bearing	(3)
	3	05-74-0025 8-16 x .750 Fillister Hd. Screw	(8)
	4	16-10-0645 Armature	(1)
	5	05-74-0500 8-16 x .562 Fillister Hd. Screw	(1)
	6	31-50-0462 Housing Assembly	(1)
	7	32-42-1155 Helical Gear	(1)
	8	45-36-1233 Spacer	(1)
	9	32-60-2395 Gear & Pinion Assembly	(1)
	10	23-66-1377 Switch	(1)
	11	06-65-0550 Pin	(1)
	12	36-17-0070 Bell Crank	(1)
	13	44-94-0295 Switch Rod	(1)
	14	45-72-0135 Trigger	(1)
	15	22-22-1345 Brush & Holder Assembly	(2)
	16	22-56-1018 Blade Housing Assembly	(1)
	17	22-64-0676 Quik-Lok Cord Set	(1)
	18	02-04-0911 Ball Bearing	(1)
	19	02-04-1000 Ball Bearing	(1)
	20	38-50-5525 Output Shaft	(1)
	21	43-54-0525 Chuck Shroud	(1)

FIG.	PART NO.	DESCRIPTION OF PART	NO. REQ.
	22	48-66-2115 10mm Chuck	(1)
	23	05-74-0513 M5 x .8 x 25 L.H. Chuck Screw	(1)
	24	02-04-0450 Ball Bearing	(1)
	25	12-20-0323 Service Nameplate Kit	(1)
	26	22-33-0550 Suppressor	(1)
		48-66-3240 Chuck Key	(1)

FIG. LUBRICATION:

- 6 Place .80 oz. (22 gm) of Type "Z" Grease, No. 49-08-7655, in the gear cavities of the housing assembly.