



SERVICE PARTS LIST

BULLETIN NO.
54-06-0580

SPECIFY CATALOG NO. AND SERIAL NO. WHEN ORDERING PARTS		REVISED BULLETIN	DATE Aug. '83
D.I. 3/8" ANGLE DRILL		WIRING INSTRUCTION	
CATALOG NO. 0375-1	STARTING SERIAL NO. 611-1001	58-01-0372	
CAT. NO.	START SER. NO.	BILINGUAL LABEL	

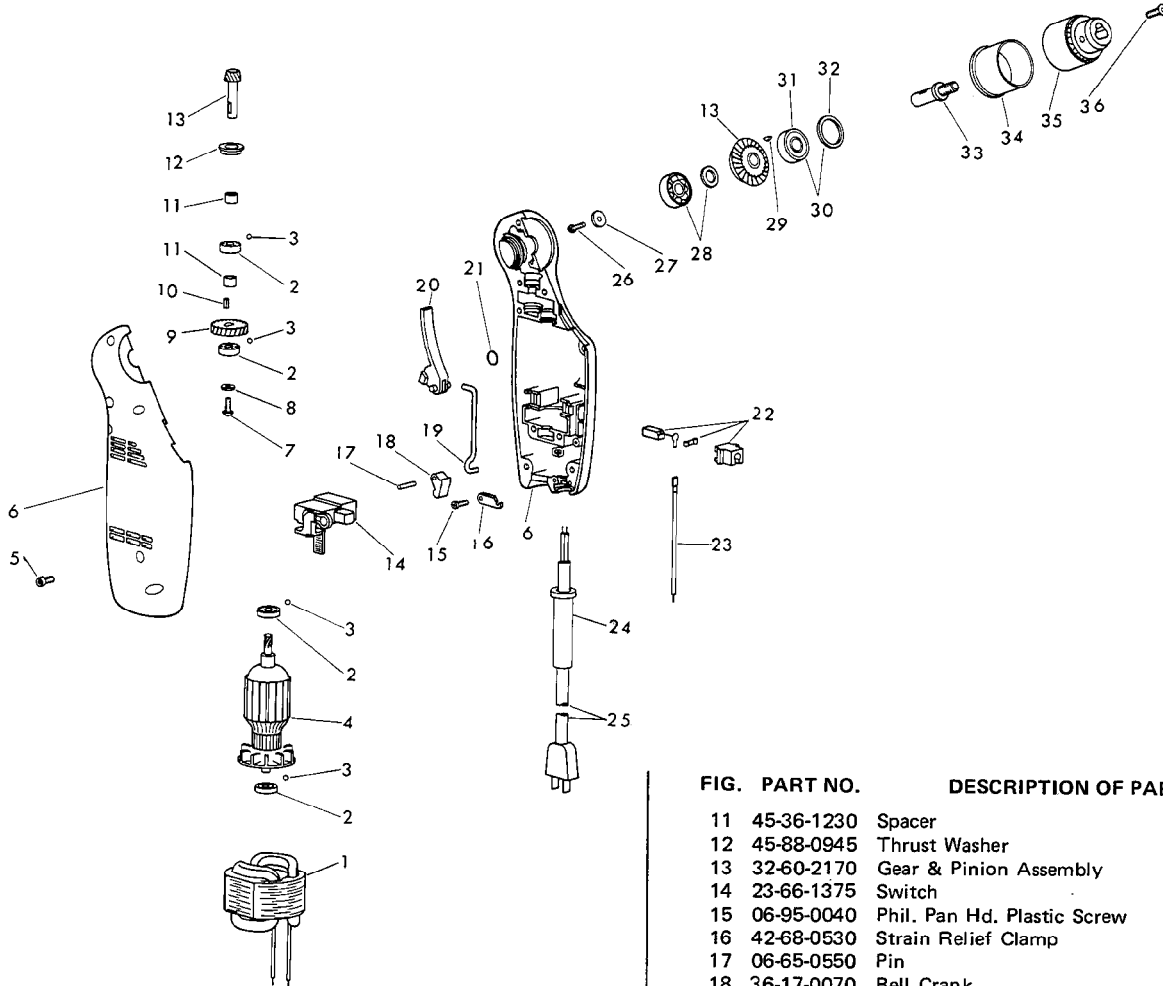


FIG.	PART NO.	DESCRIPTION OF PART	NO. REQ.
1	18-10-0110	115 V. Field	(1)
2	02-04-0300	Ball Bearing	(4)
3	02-02-1500	1/8" Rubber Ball	(4)
4	16-10-0330	115 V. Armature	(1)
5	05-74-0400	M4 x .7 x 10 Socket Hd. Cap Screw	(8)
6	31-50-0455	Housing Assy. (L.H. & R.H. Halves & Fig. No. 3)	(1)
7	06-81-3310	No. 4 - 40 x 3/8" Button Hd. Socket Cap. Screw	(1)
8	45-88-1005	Washer	(1)
9	32-42-1150	Helical Gear	(1)
10	43-96-0130	Shaft Key	(1)

FIG.	PART NO.	DESCRIPTION OF PART	NO. REQ.
11	45-36-1230	Spacer	(2)
12	45-88-0945	Thrust Washer	(1)
13	32-60-2170	Gear & Pinion Assembly	(1)
14	23-66-1375	Switch	(1)
15	06-95-0040	Phil. Pan Hd. Plastic Screw	(2)
16	42-68-0530	Strain Relief Clamp	(1)
17	06-65-0550	Pin	(1)
18	36-17-0070	Bell Crank	(1)
19	44-94-0290	Switch Rod	(1)
20	45-72-0130	Trigger	(1)
21	34-40-0110	O-Ring	(1)
22	22-22-1340	Brush & Holder Assembly	(2)
23	23-94-9800	Wire Assembly	(2)
24	44-76-0160	Cord Protector	(1)
25	22-64-0830	Cord Set	(1)
26	05-74-0410	M4 x .7 x 10 Socket Hd. Cap Screw	(1)
27	45-88-1010	Washer	(1)
28	42-24-0270	Bearing & Washer Assembly	(1)
29	06-42-0310	Woodruff Key	(1)
30	42-24-0280	Bearing & Washer Assembly	(1)
31	-	Ball Bearing	(1)
32	45-88-1015	Washer Assembly	(1)
33	38-50-5520	Output Shaft	(1)
34	43-54-0525	Chuck Schroud	(1)
35	48-66-0795	3/8" Chuck	(1)
36	05-74-0514	M5 x .8 x 20 L.H. Chuck Screw	(1)
37	48-66-3240	Chuck Key (Not Shown)	(1)
38	12-15-1681	Service Nameplate (Not Shown)	(1)