



# SERVICE PARTS LIST

**BULLETIN NO.**  
**54-06-0694**

<b>SPECIFY CATALOG NO. AND SERIAL NO. WHEN ORDERING PARTS</b>		REVISED BULLETIN 54-06-0693	DATE May '99
<b>1/2" T.S.C. REV. HOLE-SHOOTER</b>			
<b>CATALOG NO.</b> 0238-1	<b>STARTING SERIAL NO.</b> 723-48500 or 723A	<b>WIRING INSTRUCTION</b> <b>58-01-0023</b>	

**EXAMPLE:**  
Component Parts (Small #)  
Are Included When Ordering  
The Assembly (Large #).

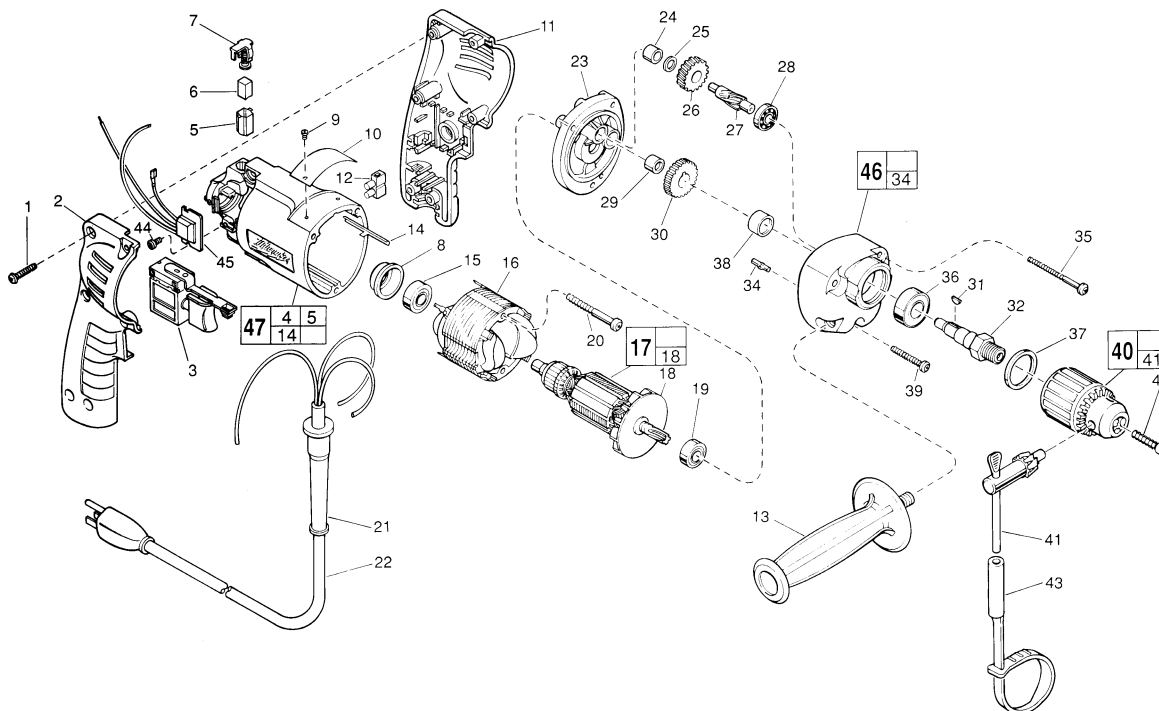


FIG.	PART NO.	DESCRIPTION OF PART	NO. REQ.
	1	06-82-7284 8-16 x 3/4" Pan Hd. Slit. Plast. T-20	(6)
★	2	31-44-1745 Right Handle Half	(1)
★	3	23-66-2145 Speed Control Switch	(1)
	4	23-94-6225 Ground Wire Assembly (Not Shown)	(1)
★	5	22-20-0830 Brush Tube	(2)
★	6	22-16-0275 Carbon Brush	(2)
	7	23-52-1560 Brush Spring Assembly	(2)
	8	22-72-0100 Bearing Cup	(1)
	9	06-85-0200 Nameplate Screw	(2)
	10	12-99-0850 Service Nameplate	(1)
★	11	31-44-1740 Left Handle Half	(1)
	12	22-56-0456 Terminal Block	(1)
	13	43-62-0905 Side Handle	(1)
	14	44-60-0530 Ground Pin	(1)
	15	02-04-0645 Ball Bearing	(1)
	16	18-11-0150 Field	(1)
	17	16-10-0370 Armature	(1)
	18	22-84-0830 Fan Assembly	(1)
	19	02-04-0851 Ball Bearing	(1)
	20	06-82-7393 7-18 x 2" Pan Hd. Slit. Plast. T-20	(2)
	21	44-76-0210 Cord Protector	(1)
★	22	22-64-1120 Cord Set	(1)
	23	28-28-1970 Diaphragm	(1)
	24	02-50-1210 Needle Bearing	(1)
	25	45-88-7301 Heat Treated Washer	(1)
	26	32-40-2010 Intermediate Gear	(1)
	27	36-66-4500 Intermediate Pinion Shaft	(1)
	28	02-04-0640 Ball Bearing	(1)
	29	02-50-1611 Needle Bearing	(1)
	30	32-75-3320 Spindle Gear	(1)
	31	06-42-1200 Woodruff Key	(1)
	32	38-50-5740 Reversing Spindle	(1)
	34	06-65-0825 1/8 x 1/2" Groove Pin 5	(1)
	35	06-82-7440 7-18 x 2-1/2" Pan Hd. Slit. Plast. T-20	(2)

FIG.	PART NO.	DESCRIPTION OF PART	NO. REQ.
	36	02-04-1229 Ball Bearing	(1)
	37	34-80-2300 Retaining Ring	(1)
	38	45-36-1100 Spindle Spacer	(1)
	39	06-82-7344 7-18 x 1-1/2" Pan Hd. Slit. Plast. T-20	(1)
	40	48-66-1360 1/2 Chuck	(1)
	41	48-66-3280 Chuck Key	(1)
	42	06-75-3150 Chuck Screw - L.H. Thread	(1)
	43	48-66-4040 Key Holder	(1)
	44	06-82-7212 4-20 x 1/4" Pan Hd. Slit. Plastite T-10	(1)
★	45	14-20-0650 Remote Electronic Assembly	(1)
	46	14-30-0521 Gear Case Assembly	(1)
★	47	14-38-0600 Motor Housing Assembly	(1)

**FIG. LUBRICATION**  
46 1-1/2 Oz. Type "E" Grease, No. 49-08-4122. Place Grease Near Intermediate Shaft Ball Bearing In Gear Case.

FIG.	NOTES
1	Torque to 18-28 In./Lbs.
20, 35, 39	Torque to 15-20 In./Lbs.
42	Torque to 40-45 In./Lbs.
44	Torque to 3-5 In./Lbs.
8	Place in motor housing before inserting armature.
24, 29	Press flush to casting surface.
29	Press only on end with manufacturer ID.
15	Seal towards armature.
36	Seal towards retaining ring.