



# SERVICE PARTS LIST

**BULLETIN NO.**  
**54-06-0693**

<b>SPECIFY CATALOG NO. AND SERIAL NO. WHEN ORDERING PARTS</b>		REVISED BULLETIN	DATE
<b>1/2" T.S.C. REV. HOLE-SHOOTER</b>		54-06-0692	May '99
<b>CATALOG NO. 0238-1</b>	<b>STARTING SERIAL NO. 723-34112</b>	WIRING INSTRUCTION	
		<b>58-01-0021</b>	

**EXAMPLE:**  
Component Parts (Small #)  
Are Included When Ordering  
The Assembly (Large #).

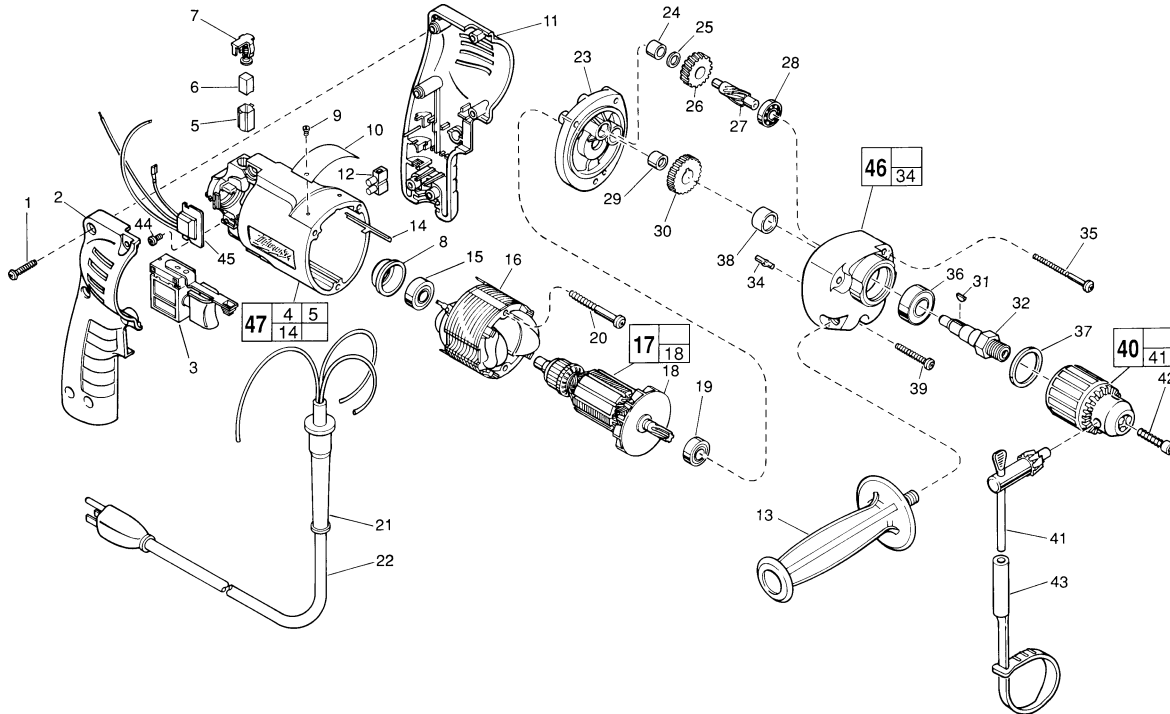


FIG.	PART NO.	DESCRIPTION OF PART	NO. REQ.
★ 1	06-82-7284	8-16 x 3/4" Pan Hd. Slit. Plast. T-20	(6)
★ 2	31-44-1705	Right Handle Half	(1)
3	23-66-1655	Speed Control Switch	(1)
★ 4	23-94-6225	Ground Wire Assembly (Not Shown)	(1)
5	22-20-0790	Brush Tube	(2)
6	22-16-0275	Carbon Brush	(2)
★ 7	23-52-1560	Brush Spring Assembly	(2)
★ 8	22-72-0100	Bearing Cup	(1)
9	06-85-0200	Nameplate Screw	(2)
10	12-99-0850	Service Nameplate	(1)
★ 11	31-44-1700	Left Handle Half	(1)
12	22-56-0456	Terminal Block	(1)
13	43-62-0905	Side Handle	(1)
14	44-60-0530	Ground Pin	(1)
15	02-04-0645	Ball Bearing	(1)
★ 16	18-11-0150	Field	(1)
17	16-10-0370	Armature	(1)
★ 18	22-84-0830	Fan Assembly	(1)
19	02-04-0851	Ball Bearing	(1)
20	06-82-7393	7-18 x 2" Pan Hd. Slit. Plast. T-20	(2)
★ 21	44-76-0210	Cord Protector	(1)
22	22-64-3180	Cord Set	(1)
★ 23	28-28-1970	Diaphragm	(1)
24	02-50-1210	Needle Bearing	(1)
25	45-88-7301	Heat Treated Washer	(1)
26	32-40-2010	Intermediate Gear	(1)
27	36-66-4500	Intermediate Pinion Shaft	(1)
28	02-04-0640	Ball Bearing	(1)
29	02-50-1611	Needle Bearing	(1)
30	32-75-3320	Spindle Gear	(1)
31	06-42-1200	Woodruff Key	(1)
32	38-50-5740	Reversing Spindle	(1)
34	06-65-0825	1/8 x 1/2" Groove Pin 5	(1)
35	06-82-7440	7-18 x 2-1/2" Pan Hd. Slit. Plast. T-20	(2)

FIG.	PART NO.	DESCRIPTION OF PART	NO. REQ.
36	02-04-1229	Ball Bearing	(1)
37	34-80-2300	Retaining Ring	(1)
38	45-36-1100	Spindle Spacer	(1)
39	06-82-7344	7-18 x 1-1/2" Pan Hd. Slit. Plast. T-20	(1)
40	48-66-1360	1/2 Chuck	(1)
41	48-66-3280	Chuck Key	(1)
42	06-75-3150	Chuck Screw - L.H. Thread	(1)
43	48-66-4040	Key Holder	(1)
★ 44	06-82-7212	4-20 x 1/4" Pan Hd. Slit. Plastite T-10	(1)
★ 45	14-20-0405	Remote Electronic Assembly	(1)
46	14-30-0521	Gear Case Assembly	(1)
★ 47	14-38-0550	Motor Housing Assembly	(1)

**FIG. LUBRICATION**  
46 1-1/2 Oz. Type "E" Grease, No. 49-08-4122. Place Grease Near Intermediate Shaft Ball Bearing In Gear Case.

FIG.	NOTES
1	Torque to 18-28 In./Lbs.
20, 35, 39	Torque to 15-20 In./Lbs.
42	Torque to 40-45 In./Lbs.
44	Torque to 3-5 In./Lbs.
8	Place in motor housing before inserting armature.
24, 29	Press flush to casting surface.
29	Press only on end with manufacturer ID.
15	Seal towards armature.
36	Seal towards retaining ring.

**MILWAUKEE ELECTRIC TOOL CORPORATION**  
13135 W. LISBON RD., BROOKFIELD, WI 53005