



# SERVICE PARTS LIST

**BULLETIN NO.**  
54-06-0576  
**DATE**  
May '99

SPECIFY CATALOG NO. AND SERIAL NO. WHEN ORDERING PARTS		REVISED BULLETIN	DATE
<b>3/8" T.S.C. REV. HOLE-SHOOTER</b>		54-06-0575	May '99
<b>CATALOG NO.</b> 0228-1	<b>STARTING SERIAL NO.</b> 689C / 689D	<b>WIRING INSTRUCTION</b> 58-01-0031	

**EXAMPLE:**  
Component Parts (Small #)  
Are Included When Ordering  
The Assembly (Large #).

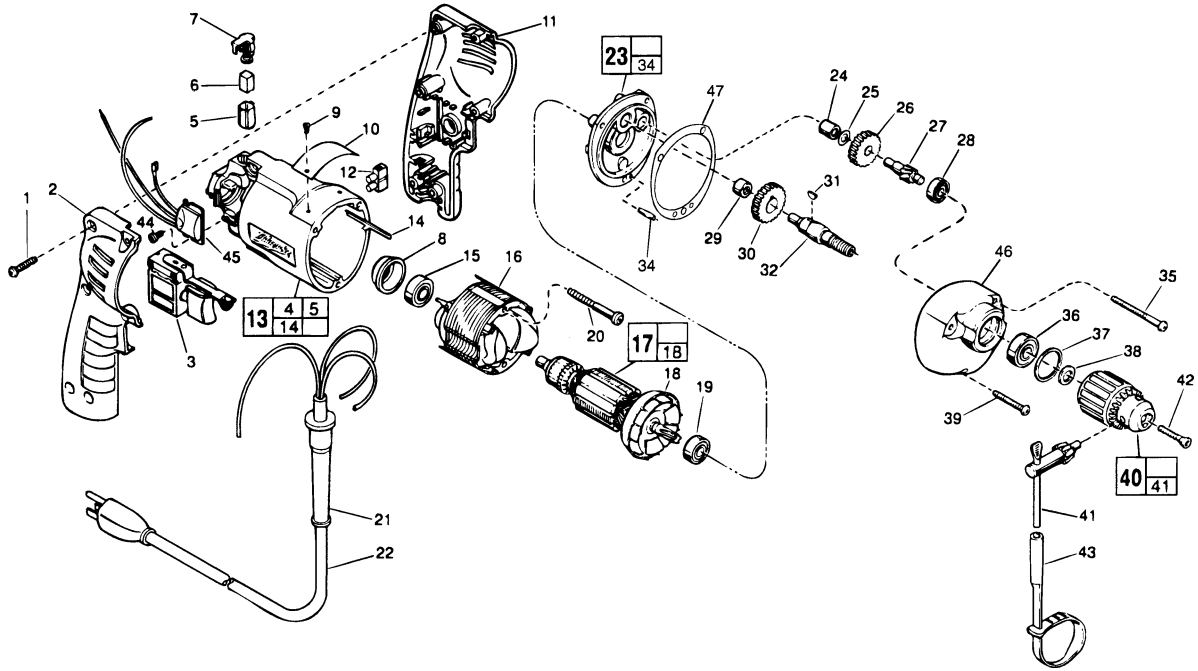


FIG.	PART NO.	DESCRIPTION OF PART	NO. REQ.
1	06-82-7284	8-16 x 3/4" Pan Hd. Slit. Plast. T-20	(6)
2	31-44-1745	Right Handle Half	(1)
3	23-66-2145	Speed Control Switch	(1)
4	23-94-6225	Ground Wire Assembly (Not Shown)	(1)
5	22-20-0830	Brush Tube	(2)
6	22-16-0275	Carbon Brush	(2)
7	23-52-1560	Brush Spring Assembly	(2)
8	22-72-0100	Bearing Cup	(1)
9	06-72-1720	Nameplate Rivet	(2)
10	12-99-0850	Service Nameplate	(1)
11	31-44-1740	Left Handle Half	(1)
12	22-56-0456	Terminal Block	(1)
13	14-38-0601	Motor Housing Assembly	(1)
14	44-60-0530	Ground Pin	(1)
15	02-04-0645	Ball Bearing	(1)
16	18-11-0060	120 Volt Field	(1)
17	16-10-0470	120 Volt D.I. Armature	(1)
18	22-84-0760	Fan Assembly	(1)
19	02-04-0851	Ball Bearing	(1)
20	06-82-7393	7-18 x 2" Pan Hd. Slit. Plast. T-20	(2)
21	44-76-0210	Cord Protector	(1)
22	22-64-1120	Cord Set	(1)
★	23	14-13-0530 Diaphragm Assembly	(1)
	24	02-50-1210 Needle Bearing	(1)
	25	45-88-7301 Heat Treated Washer	(1)
	26	32-40-1950 Intermediate Gear	(1)
	27	36-66-4380 Intermediate Pinion Shaft	(1)
	28	02-04-0640 Ball Bearing	(1)
	29	02-50-1620 Needle Bearing	(1)
	30	32-75-3230 Spindle Gear	(1)

FIG.	PART NO.	DESCRIPTION OF PART	NO. REQ.
	31	06-42-0800 Woodruff Key	(1)
	32	38-50-5660 Reversing Spindle	(1)
★	34	06-65-0880 Ground Pin	(1)
	35	06-82-7368 7-18 x 1-3/4" Pan Hd. Slit. Plast T-20	(2)
	36	02-04-1020 Ball Bearing	(1)
	37	34-80-1400 Retaining Ring	(1)
	38	45-88-7940 Chuck Washer	(1)
	39	06-82-7308 7-18 x 1-1/8" Pan Hd. Slit. Plast. T-20	(1)
	40	48-66-0795 3/8" Chuck	(1)
	41	48-66-3240 Chuck Key	(1)
	42	45-04-0750 Chuck Screw - L.H. Thread	(1)
	43	48-66-4040 Key Holder	(1)
	44	06-82-7212 4-20 x 1/4" Pan Hd. Slit. Plast. T-10	(1)
	45	14-20-0750 Remote Electronic Assembly	(1)
★	46	28-14-1825 Gear Case	(1)
★	47	43-44-0925 Gasket	(1)

**FIG. LUBRICATION**  
46 1-1/2 Oz. Type "E" Grease, No. 49-08-4122. Place Grease Near Intermediate Shaft Ball Bearing In Gear Case.

FIG.	NOTES
1	Torque to 18-28 In./Lbs.
20, 35, 39	Torque to 15-20 In./Lbs.
42	Torque to 30-50 In./Lbs.
44	Torque to 3-5 In./Lbs.
8	Place in motor housing before inserting armature.
24,29	Press flush to casting surface.
15	Seal towards armature.
36	Seal towards chuck.

**MILWAUKEE ELECTRIC TOOL CORPORATION**  
13135 W. LISBON RD., BROOKFIELD, WI 53005  
Drwg. 3