

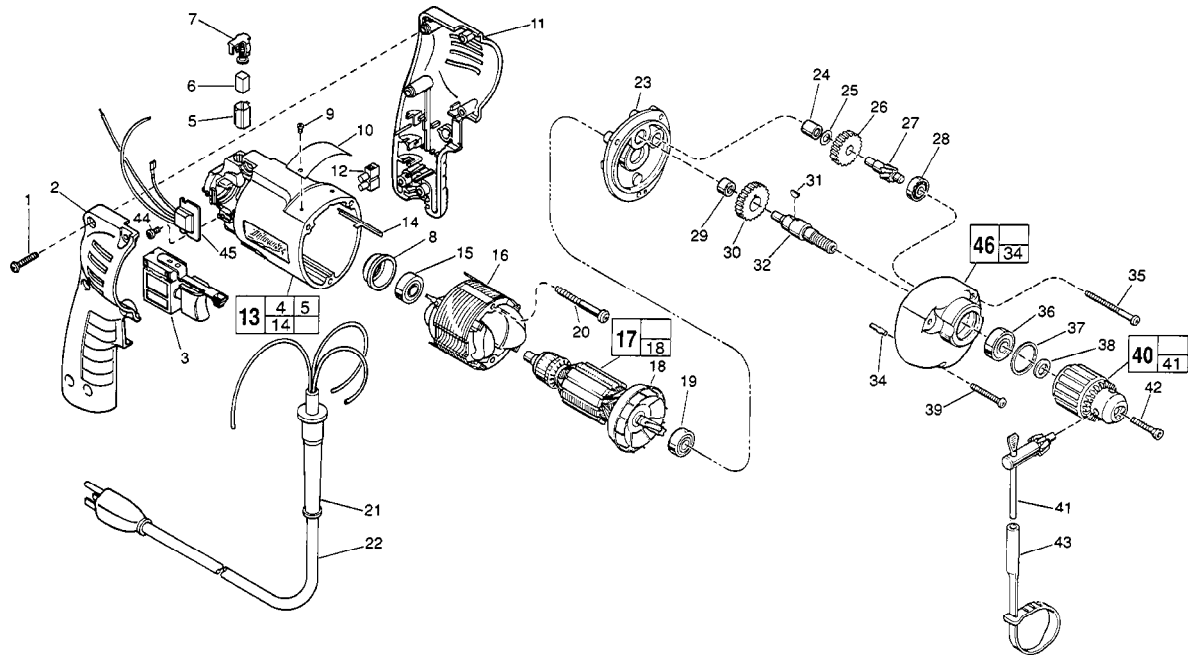


SERVICE PARTS LIST

BULLETIN NO.
54-06-2309

| SPECIFY CATALOG NO. AND SERIAL NO. WHEN ORDERING PARTS | | REVISED BULLETIN | DATE |
|--|--|--|----------|
| 3/8" T.S.C. REV. HOLE-SHOOTER | | 54-06-2308 | Apr. '93 |
| CATALOG NO. 0222-1 | STARTING SERIAL NO. 430-1091259 | WIRING INSTRUCTION 58-01-0021 | |

EXAMPLE:
Component Parts (Small #)
Are Included When Ordering
The Assembly (Large #).



| FIG. | PART NO. | DESCRIPTION OF PART | NO. REQ. |
|------|------------|---------------------------------------|----------|
| ★ 1 | 06-82-7284 | 8-16 x 3/4" Pan Hd. Slit. Plast. T-20 | (6) |
| ★ 2 | 31-44-1705 | Right Handle Half | (1) |
| 3 | 23-66-1655 | Speed Control Switch | (1) |
| ★ 4 | 23-94-6225 | Ground Wire Assembly (Not Shown) | (1) |
| ★ 5 | 22-20-0790 | Brush Tube | (2) |
| 6 | 22-16-0275 | Carbon Brush | (2) |
| ★ 7 | 23-52-1560 | Brush Spring Assembly | (2) |
| ★ 8 | 22-72-0100 | Bearing Cup | (1) |
| 9 | 06-85-0200 | Nameplate Screw | (2) |
| 10 | 12-99-0850 | Service Nameplate | (1) |
| ★ 11 | 31-44-1700 | Left Handle Half | (1) |
| 12 | 22-56-0456 | Terminal Block | (1) |
| 13 | 14-38-0550 | Motor Housing Assembly | (1) |
| 14 | 44-60-0530 | Ground Pin | (1) |
| 15 | 02-04-0645 | Ball Bearing | (1) |
| ★ 16 | 18-11-0060 | 120 Volt Field | (1) |
| 17 | 16-10-0470 | 120 Volt D.I. Armature | (1) |
| 18 | 22-84-0760 | Fan Assembly | (1) |
| 19 | 02-04-0847 | Ball Bearing | (1) |
| ★ 20 | 06-82-7393 | 7-18 x 2" Pan Hd. Slit. Plast. T-20 | (2) |
| ★ 21 | 44-76-0210 | Cord Protector | (1) |
| ★ 22 | 22-64-3180 | Cord Set | (1) |
| ★ 23 | 28-28-1940 | Diaphragm | (1) |
| 24 | 02-50-1210 | Needle Bearing | (1) |
| 25 | 45-88-7301 | Heat Treated Washer | (1) |
| 26 | 32-40-1950 | Intermediate Gear | (1) |
| 27 | 36-66-4380 | Intermediate Pinion Shaft | (1) |
| 28 | 02-04-0640 | Ball Bearing | (1) |
| 29 | 02-50-1620 | Needle Bearing | (1) |
| 30 | 32-75-3230 | Spindle Gear | (1) |

| FIG. | PART NO. | DESCRIPTION OF PART | NO. REQ. |
|------|------------|---|----------|
| 31 | 06-42-0800 | Woodruff Key | (1) |
| 32 | 38-50-5660 | Reversing Spindle | (1) |
| 34 | 06-65-0825 | 1/8 x 1/2" Groove Pin 5 | (1) |
| 35 | 06-82-7368 | 7-18 x 1-3/4" Pan Hd. Slit. Plast. T-20 | (2) |
| 36 | 02-04-1020 | Ball Bearing | (1) |
| 37 | 34-80-1400 | Retaining Ring | (1) |
| 38 | 45-88-7940 | Chuck Washer | (1) |
| 39 | 06-82-7308 | 7 x 1-1/8" Pan Hd. Slit. Plast. T-20 | (1) |
| 40 | 48-66-0805 | 3/8" Chuck | (1) |
| 41 | 48-66-3080 | Chuck Key | (1) |
| 42 | 45-04-0750 | Chuck Screw - L.H. Thread | (1) |
| 43 | 48-66-4040 | Key Holder | (1) |
| 44 | 06-82-7212 | 4-20 x 1/4" Pan Hd. Slit. Plast. T-10 | (1) |
| ★ 45 | 14-20-0405 | Remote Electronic Assembly | (1) |
| 46 | 14-30-0620 | Gear Case Assembly | (1) |

FIG LUBRICATION

46 1-1/2 Oz. Type "E" Grease, No. 49-08-4122. Place Grease Near Intermediate Shaft Ball Bearing in Gear Case.

FIG. NOTES

- 1 Torque to 18-22 In./Lbs.
- 20, 35, 39 Torque to 15-20 In./Lbs.
- 42 Torque to 30-35 In./Lbs.
- 44 Torque to 3-5 In./Lbs.
- 8 Place in motor housing before inserting armature.
- 24, 29 Press flush to casting surface.
- 15, 19 Seal towards armature.
- 36 Seal towards chuck.

MILWAUKEE ELECTRIC TOOL CORPORATION
13135 W. LISBON RD., BROOKFIELD, WI 53005