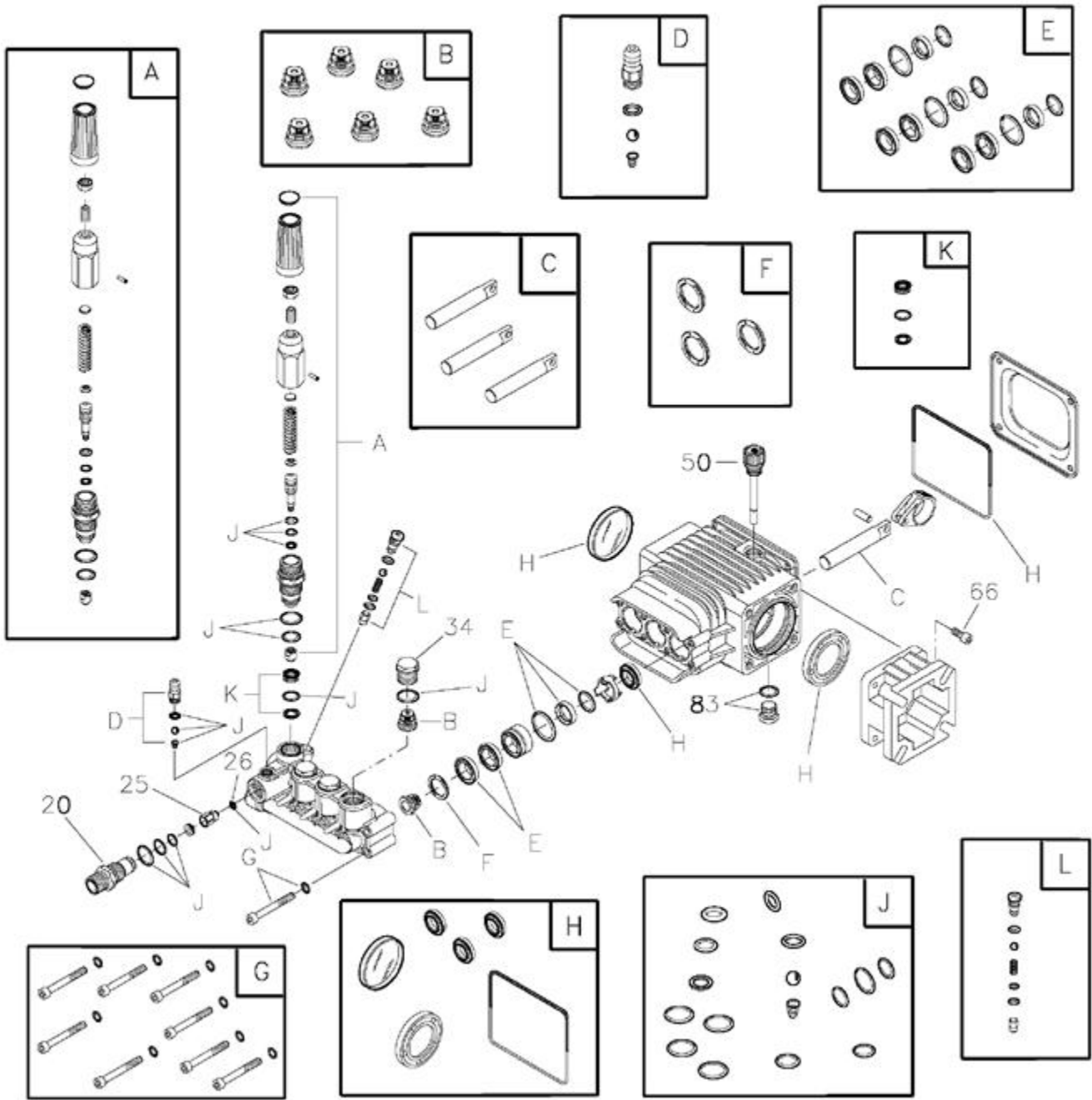


| Ref # | Part # | Description | Qty | Context Note | Foot Note |
|--------------|---------------|----------------------------------|------------|--------------------------------|------------------|
| 1 | M204417GS | BASE, w/Mounts | | | |
| 2 | M201453GS | HANDLE | | | |
| 3 | 203301GS | HOSE | | | |
| 4 | 205380GS | KIT, Spray Tips | | | |
| | 195983NGS | Nozzle, QC, Red | | | |
| | 195983PGS | Nozzle, QC, Yellow | | | |
| | 195983QGS | Nozzle, QC, Green | | | |
| | 195983RGS | Nozzle, QC, White | | | |
| | 195846ZZGS | Nozzle, QC, Black | | | |
| 5 | 192134GS | KIT, Engine Mounting Hardware | | | |
| 6 | 202771GS | KIT, Pump Mounting Hardware | | | |
| 7 | 202388GS | KIT, Wheel | | | |
| | 191265GS | E-Ring | | | |
| 8 | 192796GS | KIT, Chemical Hose/Filter | | | |
| 9 | 202772GS | ASSY, Pump | | | |
| | 194298GS | Thermal Relief | | | |
| | 23139DGS | Key | | | |
| 10 | 95458GS | FITTING, Quick Connect | | | |
| 11 | 199310GS | KIT, Garden Hose Inlet | | | |
| 12 | 199956GS | GUN | | | |
| 13 | 200595GS | EXTENSION, QC | | | |
| 14 | 203040GS | KIT, Handle Fastening | | | |
| 15 | 192310GS | KIT, Vibration Mount | | | |
| 900 | § | ENGINE | | Contact Engine Manufacturer | |
| | 203293GS | MANUAL, Operator`s | | Items Not Illustrated | |
| | 191267SGS | AXLE | | Items Not Illustrated | |
| | 30809GS | GROMMET | | Items Not Illustrated | |
| | BB3061BGS | OIL BOTTLE | | Items Not Illustrated | |
| | 87815GS | GOGGLES | | Items Not Illustrated | |
| | 203290GS | DECAL, Unit | | Items Not Illustrated | |
| | 204058GS | DECAL, Air Cleaner | | Items Not Illustrated | |
| | 200658GS | DECAL, Recoil | | Items Not Illustrated | |
| | 194256GS | KIT, Tag Warning, w/Clip | | Items Not Illustrated | |
| | 6048 | KIT, O-Ring Maintenance | | Optional Accessories | |
| | 6039 | PUMP SAVER | | Optional Accessories | |



| Ref # | Part # | Description | Qty | Context Note | Foot Note |
|-------|----------|----------------------------|-----|--|-----------|
| 20 | 198851GS | INJTR, Detergent 3/8NPT | | | |
| 25 | 204860GS | JET | | | |
| 26 | 204859GS | O-RING | | | |
| 34 | 198850GS | PLUG | | | |
| 50 | 198849GS | CAP, Oil Dipstick | | | |
| 66 | 198297GS | SCREW, M8 x 20 | | | |
| 83 | 203034GS | KIT, Drain Plug | | | |
| A | 198736GS | KIT, Unloader | | Service kits and include all parts shown within the box | |
| B | 198843GS | KIT, Valves | | Service kits and include all parts shown within the box | |
| C | 198844GS | KIT, Piston | | Service kits and include all parts shown within the box | |
| D | 192914GS | KIT, Hose Tail | | Service kits and include all parts shown within the box | |
| E | 198845GS | KIT, Water Seals | | Service kits and include all parts shown within the box | |
| F | 198848GS | KIT, Support Ring | | Service kits and include all parts shown within the box | |
| G | 198852GS | KIT, Pump Head Hardware | | Service kits and include all parts shown within the box | |
| H | 198846GS | KIT, Oil Seals | | Service kits and include all parts shown within the box | |
| J | 198847GS | KIT, O-Rings | | Service kits and include all parts shown within the box | |
| K | 202902GS | KIT, Seat | | Service kits and include all parts shown within the box | |
| L | 202800GS | KIT, EZ Start | | Service kits and include all parts shown within the box | |
| | B2384GS | FILTER Inlet | | Parts Not Illustrated | |
| | 194298GS | Thermal Relief | | Parts Not Illustrated | |
| | 6039 | PUMP SAVER | | Optional Accessories | |
| | 6033 | OIL BOTTLE, Pump | | Optional Accessories | |