



SERVICE PARTS LIST

BULLETIN NO.
54-06-2876

SPECIFY CATALOG NO. AND SERIAL NO. WHEN ORDERING PARTS			REVISED BULLETIN	DATE
3/8 INCH DRILL			54-06-2875	June 2011
CATALOG NO.	0201-20	STARTING SERIAL NO.	WIRING INSTRUCTION	
		067B	58-01-1806	

EXAMPLE:

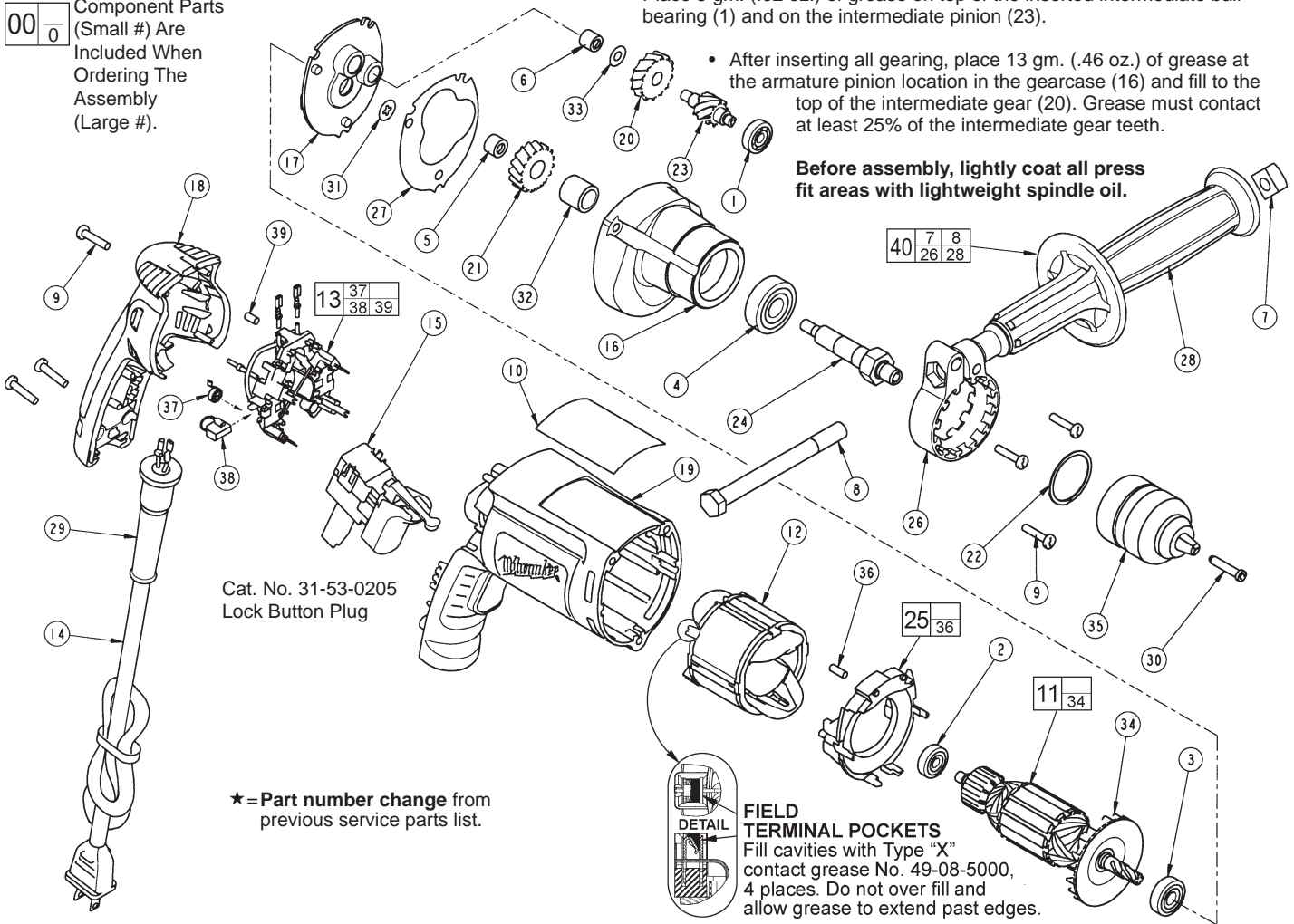
Component Parts
(Small #) Are
Included When
Ordering The
Assembly
(Large #).

00	0
----	---

LUBRICATION (Type "Y" Grease, No. 49-08-5270)

- Place 5 gm. (.02 oz.) of grease on top of the inserted intermediate ball bearing (1) and on the intermediate pinion (23).
- After inserting all gearing, place 13 gm. (.46 oz.) of grease at the armature pinion location in the gearcase (16) and fill to the top of the intermediate gear (20). Grease must contact at least 25% of the intermediate gear teeth.

Before assembly, lightly coat all press fit areas with lightweight spindle oil.



Cat. No. 31-53-0205
Lock Button Plug

★ = Part number change from previous service parts list.

FIELD TERMINAL POCKETS
Fill cavities with Type "X" contact grease No. 49-08-5000, 4 places. Do not over fill and allow grease to extend past edges.

FIG.	PART NO.	DESCRIPTION OF PART	NO. REQ.
1	02-04-0640	Ball Bearing	(1)
2	02-04-0645	Ball Bearing	(1)
3	02-04-0852	Ball Bearing	(1)
4	02-04-1229	Ball Bearing	(1)
5	02-50-1611	Needle Bearing	(1)
6	02-50-2400	Needle Bearing	(1)
7	06-54-0325	3/8-16 Square Nut	(1)
8	06-75-2850	3/8-16 x 5-1/2 Hex Cap Screw	(1)
9	06-82-7275	7-18 x 3/4 Slotted Plastite T-20	(6)
10	12-99-2665	Service Nameplate	(1)
11	16-10-2215	Armature	(1)
12	18-07-2200	Field	(1)
13	22-18-1210	Brush Card Assembly	(1)
14	22-64-6510	Cord Assembly	(1)
★ 15	23-66-2605	Switch	(1)
16	28-14-2390	Gearcase	(1)
17	28-28-2320	Diaphragm	(1)
18	31-15-2010	Handle Halve	(1)
★ 19	31-50-4050	Motor Housing	(1)
20	32-40-0100	Intermediate Gear	(1)
21	32-75-0115	Spindle Gear	(1)
22	34-80-2300	Retaining Ring	(1)
23	36-66-0125	Intermediate Shaft	(1)
24	38-50-5750	Spindle	(1)
25	42-14-0460	Baffle Assembly	(1)

FIG.	PART NO.	DESCRIPTION OF PART	NO. REQ.
26	42-68-0800	Side Handle Clamp	(1)
27	43-44-0985	Gasket	(1)
28	43-62-0845	Side Handle	(1)
29	44-76-0210	Cord Protector	(1)
30	45-04-0750	Chuck Screw	(1)
32	45-36-1095	Spindle Spacer	(1)
33	45-88-7990	Thrust Washer	(1)
34	22-84-0845	Fan	(1)
35	48-66-1530	3/8 Two Sleeve Keyless Chuck	(1)
36	45-30-0030	Slug	(2)
37	23-52-1610	Brush Spring	(2)
38	22-18-1310	Brush Assembly	(2)
39	45-30-0035	Slug	(1)
40	49-15-0265	Side Handle Assembly	(1)

- FIG. NOTES:**
- 4,21 Support the output ball bearing inside the gearcase before pressing off the spindle gear.
 - 5,6 Needle bearings to be pressed flush to .010 under flush from the end which has the vendors identification.