



# SERVICE PARTS LIST

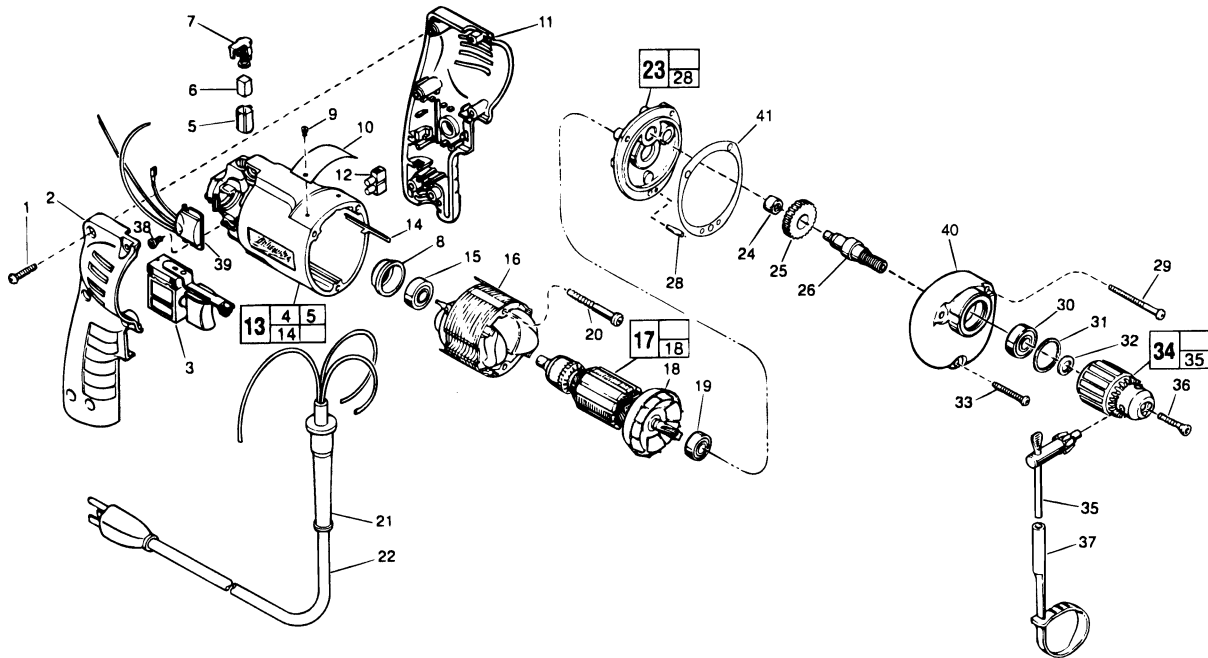
**BULLETIN NO.**  
**54-06-0675**

|   |  |   |                  |
|---|--|---|------------------|
| <b>SPECIFY CATALOG NO. AND SERIAL NO. WHEN ORDERING PARTS</b> |  | REVISED BULLETIN<br>54-06-0674          | DATE<br>Aug. '99 |
| <b>1/4" T.S.C. REV. HOLE-SHOOTER</b>                          |  |   |                  |
| CATALOG NO. <b>0141-1</b>                                     | STARTING SERIAL NO. <b>708C / 708D</b> | WIRING INSTRUCTION<br><b>58-01-1591</b> |                  |

**EXAMPLE:**

00 0

Component Parts (Small #)  
Are Included When Ordering  
The Assembly (Large #).



| FIG. | PART NO. | DESCRIPTION OF PART                                | NO. REQ. |
|------|----------|--|----------|
|      | 1        | 06-82-7284 8-16 x 3/4" Pan Hd. Slit. Plast. T-20   | (6)      |
|      | 2        | 31-44-1745 Right Handle Half                       | (1)      |
|      | 3        | 23-66-2145 Speed Control Switch                    | (1)      |
|      | 4        | 23-94-6225 Ground Wire Assembly (Not Shown)        | (1)      |
|      | 5        | 22-20-0830 Brush Tube                              | (2)      |
|      | 6        | 22-16-0275 Carbon Brush                            | (2)      |
|      | 7        | 23-52-1560 Brush Spring Assembly                   | (2)      |
|      | 8        | 22-72-0100 Bearing Cup                             | (1)      |
|      | 9        | 06-72-1720 Nameplate Rivet                         | (2)      |
|      | 10       | 12-99-0850 Service Nameplate                       | (1)      |
|      | 11       | 31-44-1740 Left Handle Half                        | (1)      |
|      | 12       | 22-56-0456 Terminal Block                          | (1)      |
|      | 13       | 14-38-0601 Motor Housing Assembly                  | (1)      |
|      | 14       | 44-60-0530 Ground Pin                              | (1)      |
|      | 15       | 02-04-0645 Ball Bearing                            | (1)      |
|      | 16       | 18-11-0060 120 Volt Field                          | (1)      |
|      | 17       | 16-10-0460 120 Volt Armature                       | (1)      |
|      | 18       | 22-84-0760 Fan Assembly                            | (1)      |
|      | ★ 19     | 02-04-0851 Ball Bearing                            | (1)      |
|      | 20       | 06-82-7393 7-18 x 2" Pan Hd. Slit. Plast. T-20     | (2)      |
|      | 21       | 44-76-0210 Cord Protector                          | (1)      |
|      | 22       | 22-64-1120 Cord Set                                | (1)      |
|      | ★ 23     | 14-13-0525 Diaphragm Assembly                      | (1)      |
|      | 24       | 02-50-1620 Needle Bearing                          | (1)      |
|      | 25       | 32-75-3250 Spindle Gear                            | (1)      |
|      | 26       | 38-50-5670 Spindle                                 | (1)      |
|      | ★ 28     | 06-65-0880 Ground Pin                              | (1)      |
|      | 29       | 06-82-7344 7-18 x 1-1/2" Pan Hd. Slit. Plast. T-20 | (2)      |

| FIG. | PART NO. | DESCRIPTION OF PART                                | NO. REQ. |
|------|----------|--|----------|
|      | 30       | 02-04-1020 Ball Bearing                            | (1)      |
|      | 31       | 34-80-1400 Retaining Ring                          | (1)      |
|      | 32       | 45-88-7940 Chuck Washer                            | (1)      |
|      | 33       | 06-82-7308 7-18 x 1-1/8" Pan Hd. Slit. Plast. T-20 | (1)      |
|      | 34       | 48-66-0070 1/4" Chuck                              | (1)      |
|      | 35       | 48-66-3200 Chuck Key                               | (1)      |
|      | 36       | 45-04-0750 Chuck Screw-L.H. Thread                 | (1)      |
|      | 37       | 48-66-4080 Key Holder                              | (1)      |
|      | 38       | 06-82-7212 4-20 x 1/4" Pan Hd. Plast. T-10         | (1)      |
|      | 39       | 14-20-0750 Remote Electronic Assembly              | (1)      |
|      | ★ 40     | 28-14-1835 Gear Case                               | (1)      |
|      | ★ 41     | 43-44-0925 Gasket                                  | (1)      |

**FIG. LUBRICATION**

40 1-1/8 Oz. Type "E" Grease, No. 49-08-4122.  
Place In Center Of Gear Case.

**FIG. NOTES**

- 1 Torque to 18- 28 In./Lbs.
- 20, 29, 33 Torque to 15-20 In./Lbs.
- 36 Torque to 30-50 In./Lbs.
- 38 Torque to 3-5 In./Lbs.
- 8 Place in motor housing before inserting armature.
- 24 Press flush to casting surface.
- 15,19 Seal towards armature.
- 30 Seal towards chuck.

**MILWAUKEE ELECTRIC TOOL CORPORATION**  
13135 W. LISBON RD., BROOKFIELD, WI 53005  
Drwg. 3