



SERVICE PARTS LIST

BULLETIN NO.
54-06-0674

SPECIFY CATALOG NO. AND SERIAL NO. WHEN ORDERING PARTS		REVISED BULLETIN 54-06-0673	DATE Aug. '99
1/4" T.S.C. REV. HOLE-SHOOTER			
CATALOG NO. 0141-1	STARTING SERIAL NO. 708B	WIRING INSTRUCTION 58-01-1591	

EXAMPLE:



Component Parts (Small #)
Are Included When Ordering
The Assembly (Large #).

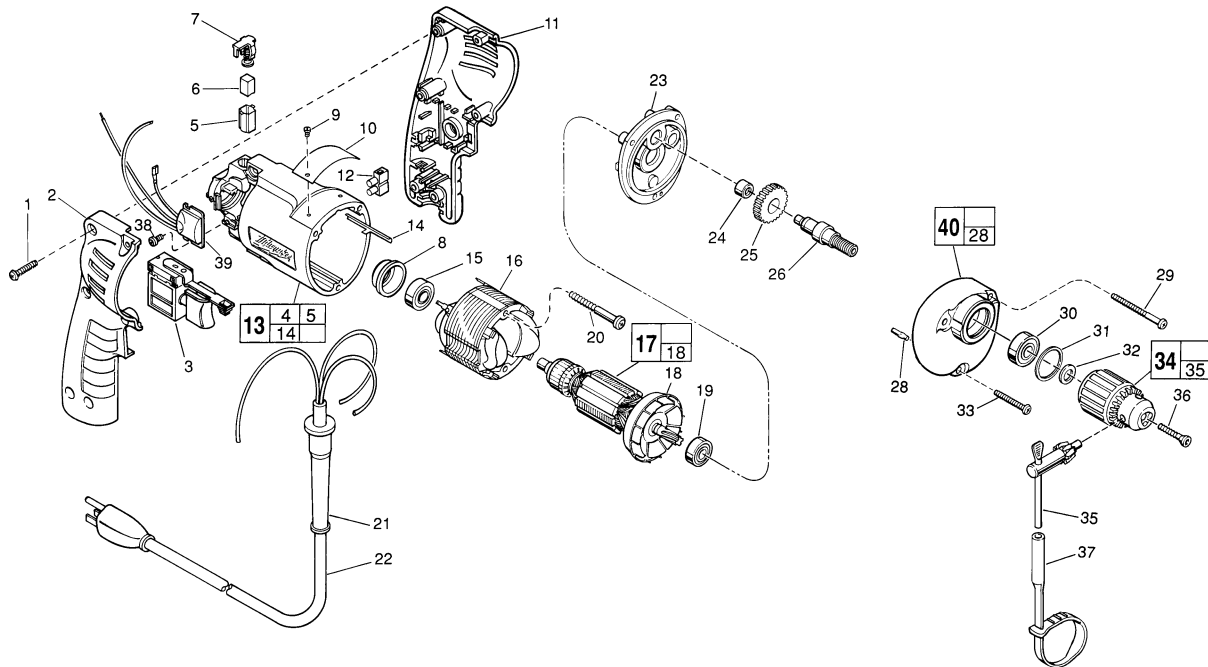


FIG.	PART NO.	DESCRIPTION OF PART	NO. REQ.
	1	06-82-7284 8-16 x 3/4" Pan Hd. Slit. Plast. T-20	(6)
	2	31-44-1745 Right Handle Half	(1)
	3	23-66-2145 Speed Control Switch	(1)
	4	23-94-6225 Ground Wire Assembly (Not Shown)	(1)
	5	22-20-0830 Brush Tube	(2)
	6	22-16-0275 Carbon Brush	(2)
	7	23-52-1560 Brush Spring Assembly	(2)
	8	22-72-0100 Bearing Cup	(1)
★	9	06-72-1720 Nameplate Rivet	(2)
	10	12-99-0850 Service Nameplate	(1)
	11	31-44-1740 Left Handle Half	(1)
	12	22-56-0456 Terminal Block	(1)
★	13	14-38-0601 Motor Housing Assembly	(1)
	14	44-60-0530 Ground Pin	(1)
	15	02-04-0645 Ball Bearing	(1)
	16	18-11-0060 120 Volt Field	(1)
	17	16-10-0460 120 Volt Armature	(1)
	18	22-84-0760 Fan Assembly	(1)
	19	02-04-0847 Ball Bearing	(1)
	20	06-82-7393 7-18 x 2" Pan Hd. Slit. Plast. T-20	(2)
	21	44-76-0210 Cord Protector	(1)
	22	22-64-1120 Cord Set	(1)
	23	28-28-1950 Diaphragm	(1)
	24	02-50-1620 Needle Bearing	(1)
	25	32-75-3250 Spindle Gear	(1)
	26	38-50-5670 Spindle	(1)
	28	06-65-0825 1/8 x 1/2" Groove Pin 5	(1)
	29	06-82-7344 7-18 x 1-1/2" Pan Hd. Slit. Plast. T-20	(2)

FIG.	PART NO.	DESCRIPTION OF PART	NO. REQ.
	30	02-04-1020 Ball Bearing	(1)
	31	34-80-1400 Retaining Ring	(1)
	32	45-88-7940 Chuck Washer	(1)
	33	06-82-7308 7-18 x 1-1/8" Pan Hd. Slit. Plast. T-20	(1)
	34	48-66-0070 1/4" Chuck	(1)
	35	48-66-3200 Chuck Key	(1)
	36	45-04-0750 Chuck Screw-L.H. Thread	(1)
	37	48-66-4080 Key Holder	(1)
	38	06-82-7212 4-20 x 1/4" Pan Hd. Plast. T-10	(1)
★	39	14-20-0750 Remote Electronic Assembly	(1)
★	40	14-30-0611 Gear Case Assembly	(1)

FIG. LUBRICATION
40 1-1/8 Oz. Type "E" Grease, No. 49-08-4122.
Place In Center Of Gear Case.

FIG. NOTES
1 Torque to 18- 28 In./Lbs.
20, 29, 33 Torque to 15-20 In./Lbs.
36 Torque to 30-50 In./Lbs.
38 Torque to 3-5 In./Lbs.
8 Place in motor housing before inserting armature.
24 Press flush to casting surface.
15,19 Seal towards armature.
30 Seal towards chuck.

MILWAUKEE ELECTRIC TOOL CORPORATION
13135 W. LISBON RD., BROOKFIELD, WI 53005
Drwg. 1