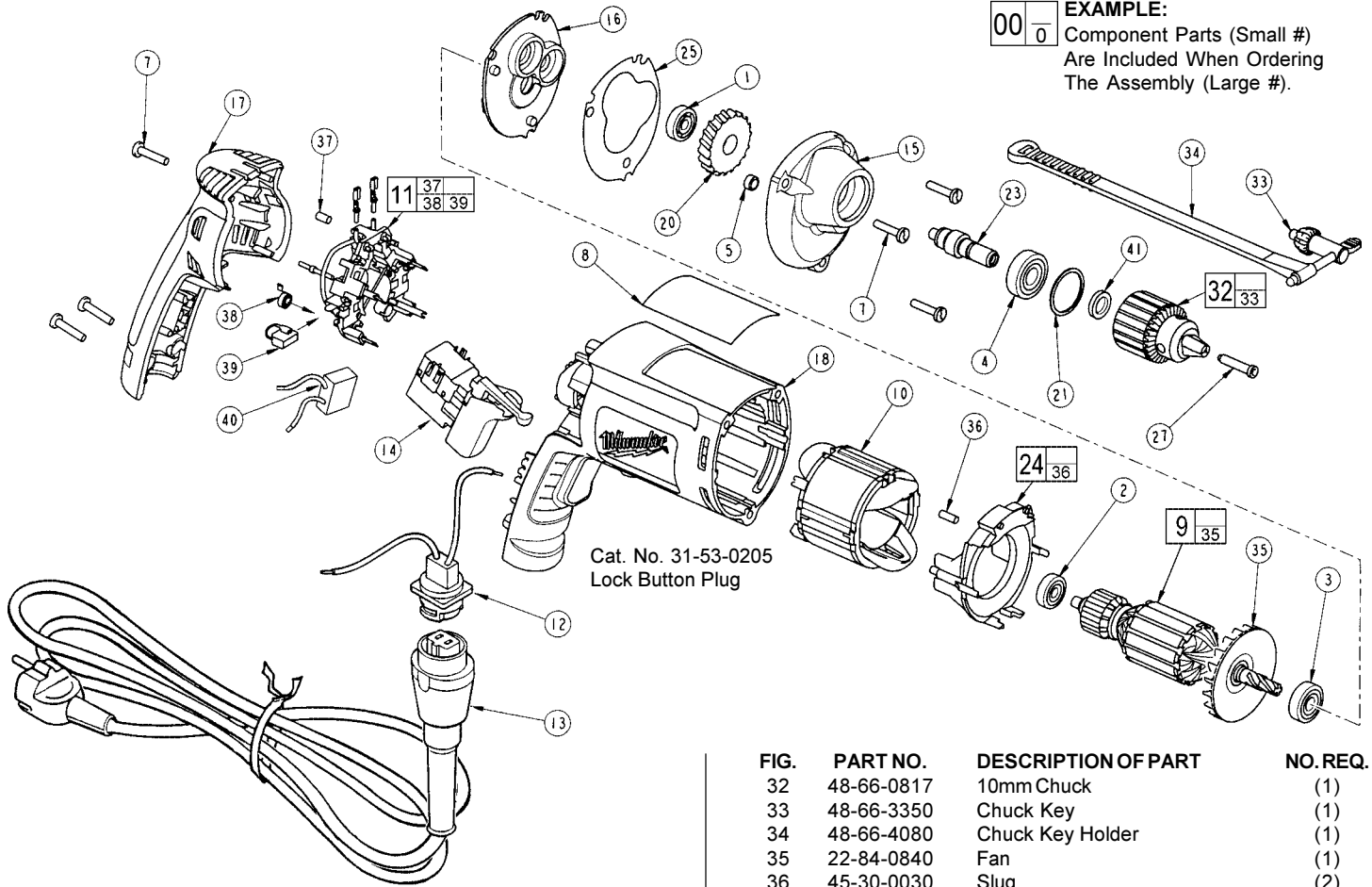




SERVICE PARTS LIST

BULLETIN NO.
55-06-2825

SPECIFY CATALOG NO. AND SERIAL NO. WHEN ORDERING PARTS			REVISED BULLETIN	DATE
10mm DRILL				Feb. 2002
CATALOG NO.	0101-50	STARTING SERIAL NO.	WIRING INSTRUCTION	
		064A	58-03-1800	



EXAMPLE:

00	0
----	---

 Component Parts (Small #)
 Are Included When Ordering
 The Assembly (Large #).

FIG.	PART NO.	DESCRIPTION OF PART	NO. REQ.
1	02-04-0640	Ball Bearing	(1)
2	02-04-0645	Ball Bearing	(1)
3	02-04-0852	Ball Bearing	(1)
4	02-04-1020	Ball Bearing	(1)
5	42-40-0045	Armature Bushing	(1)
7	06-82-7275	7-18 x 3/4 Slotted Plastite T-20	(6)
8	12-99-2680	Service Nameplate	(1)
9	16-14-2200	Armature	(1)
10	18-04-2200	Field	(1)
11	22-18-1220	Brush Card Assembly	(1)
12	22-56-1015	Blade Housing Assembly	(1)
13	48-76-5012	Quik-Lok Cord Set	(1)
13	22-64-0684	Quik-Lok Cord Set (Australia)	(1)
14	23-66-2135	Switch	(1)
15	28-14-2385	Gearcase	(1)
16	28-28-2315	Diaphragm	(1)
17	31-15-2030	Handle Halve	(1)
18	31-50-2030	Motor Housing	(1)
20	32-75-0120	Spindle Gear	(1)
21	34-80-1400	Retaining Ring	(1)
23	38-50-5745	Spindle	(1)
24	42-14-0460	Baffle Assembly	(1)
25	43-44-0985	Gasket	(1)
27	45-04-0750	Chuck Screw	(1)

FIG.	PART NO.	DESCRIPTION OF PART	NO. REQ.
32	48-66-0817	10mm Chuck	(1)
33	48-66-3350	Chuck Key	(1)
34	48-66-4080	Chuck Key Holder	(1)
35	22-84-0840	Fan	(1)
36	45-30-0030	Slug	(2)
37	45-30-0035	Slug	(1)
38	23-52-1610	Brush Spring	(2)
39	22-18-1320	Brush Assembly	(2)
40	22-33-0550	Suppressor	(1)
41	45-88-7940	Chuck Washer	(1)

FIG. LUBRICATION:
 15 Place .24 oz. (6.8 grams) of type "Y" grease, No. 49-08-5270, at the armature pinion location in the gearcase pocket and push down .20".

Before assembly, lightly coat all press fit areas with type "Y" grease.

MILWAUKEE ELECTRIC TOOL CORPORATION
 13135 W. LISBON RD., BROOKFIELD, WI 53005