



SERVICE PARTS LIST

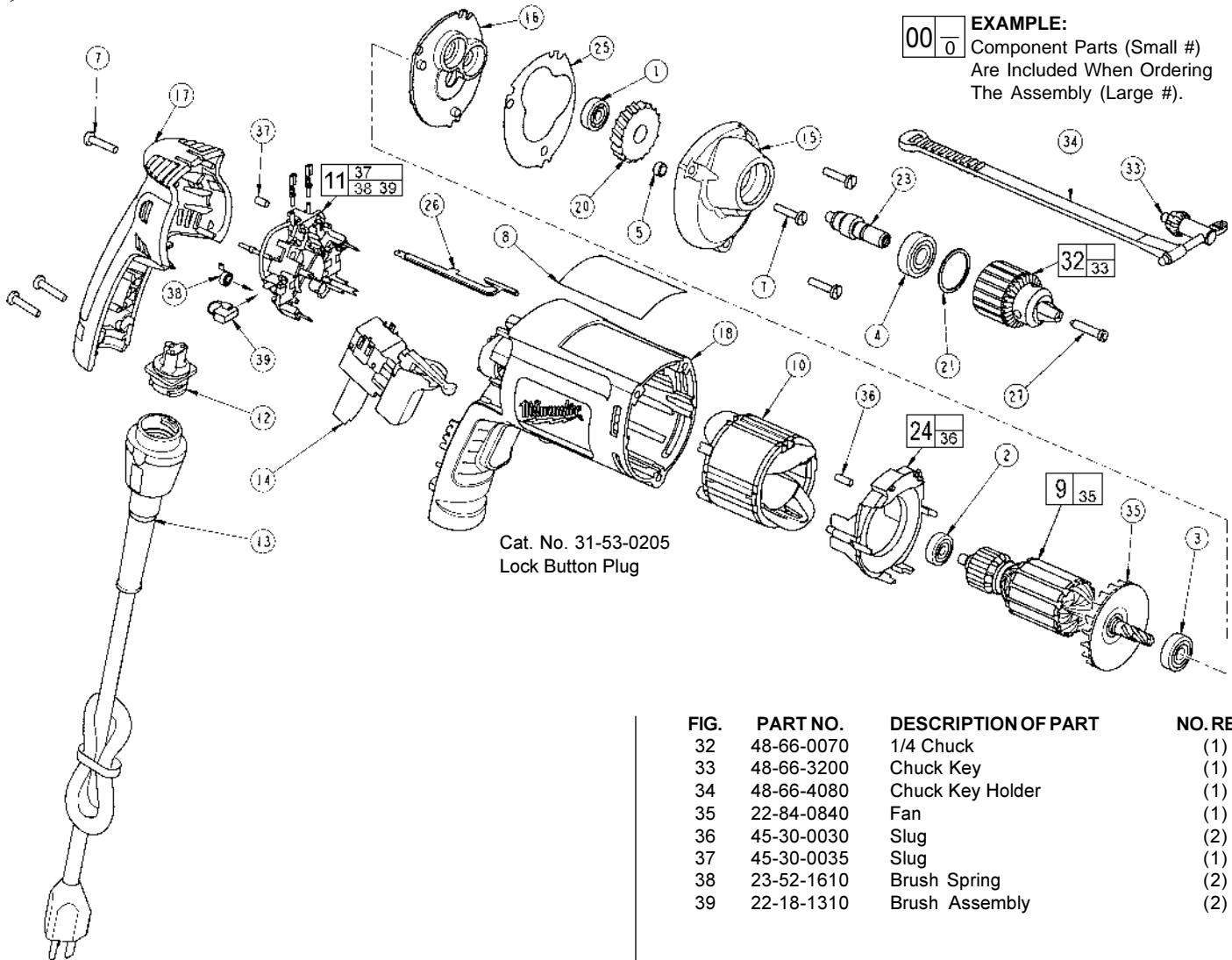
BULLETIN NO.
54-06-2825

SPECIFY CATALOG NO. AND SERIAL NO. WHEN ORDERING PARTS			REVISED BULLETIN	DATE
1/4 INCH DRILL				Jan. 2001
CATALOG NO.	0101-20	STARTING SERIAL NO.	064A	
			WIRING INSTRUCTION 58-01-1800	

EXAMPLE:

00	0
----	---

 Component Parts (Small #)
 Are Included When Ordering
 The Assembly (Large #).



Cat. No. 31-53-0205
Lock Button Plug

FIG.	PART NO.	DESCRIPTION OF PART	NO. REQ.
1	02-04-0640	Ball Bearing	(1)
2	02-04-0645	Ball Bearing	(1)
3	02-04-0852	Ball Bearing	(1)
4	02-04-1020	Ball Bearing	(1)
5	42-40-0045	Armature Bearing	(1)
7	06-82-7275	7-18 x 3/4 Slotted Plastite T-20	(6)
8	12-99-2565	Service Nameplate	(1)
9	16-10-2200	Armature	(1)
10	18-07-2200	Field	(1)
11	22-18-1210	Brush Card Assembly	(1)
12	22-56-1010	Pin Housing Assembly	(1)
13	48-76-4008	Quik-Lok Cord Set	(1)
14	23-66-2585	Switch	(1)
15	28-14-2385	Gearcase	(1)
16	28-28-2315	Diaphragm	(1)
17	31-15-2030	Handle Halve	(1)
18	31-50-2030	Motor Housing	(1)
20	32-75-0120	Spindle Gear	(1)
21	34-80-1400	Retaining Ring	(1)
23	38-50-5745	Spindle	(1)
24	42-14-0460	Baffle Assembly	(1)
25	43-44-0985	Gasket	(1)
26	44-60-1700	Ground Pin	(1)
27	45-04-0750	Chuck Screw	(1)

FIG.	PART NO.	DESCRIPTION OF PART	NO. REQ.
32	48-66-0070	1/4 Chuck	(1)
33	48-66-3200	Chuck Key	(1)
34	48-66-4080	Chuck Key Holder	(1)
35	22-84-0840	Fan	(1)
36	45-30-0030	Slug	(2)
37	45-30-0035	Slug	(1)
38	23-52-1610	Brush Spring	(2)
39	22-18-1310	Brush Assembly	(2)

FIG. LUBRICATION:
 15 Place .24 oz. (6.8 grams) of type "Y" grease, No. 49-08-5270, at the armature pinion location in the gearcase pocket and push down .20".

Before assembly, lightly coat all press fit areas with type "Y" grease.

MILWAUKEE ELECTRIC TOOL CORPORATION
 13135 W. LISBON RD., BROOKFIELD, WI 53005