

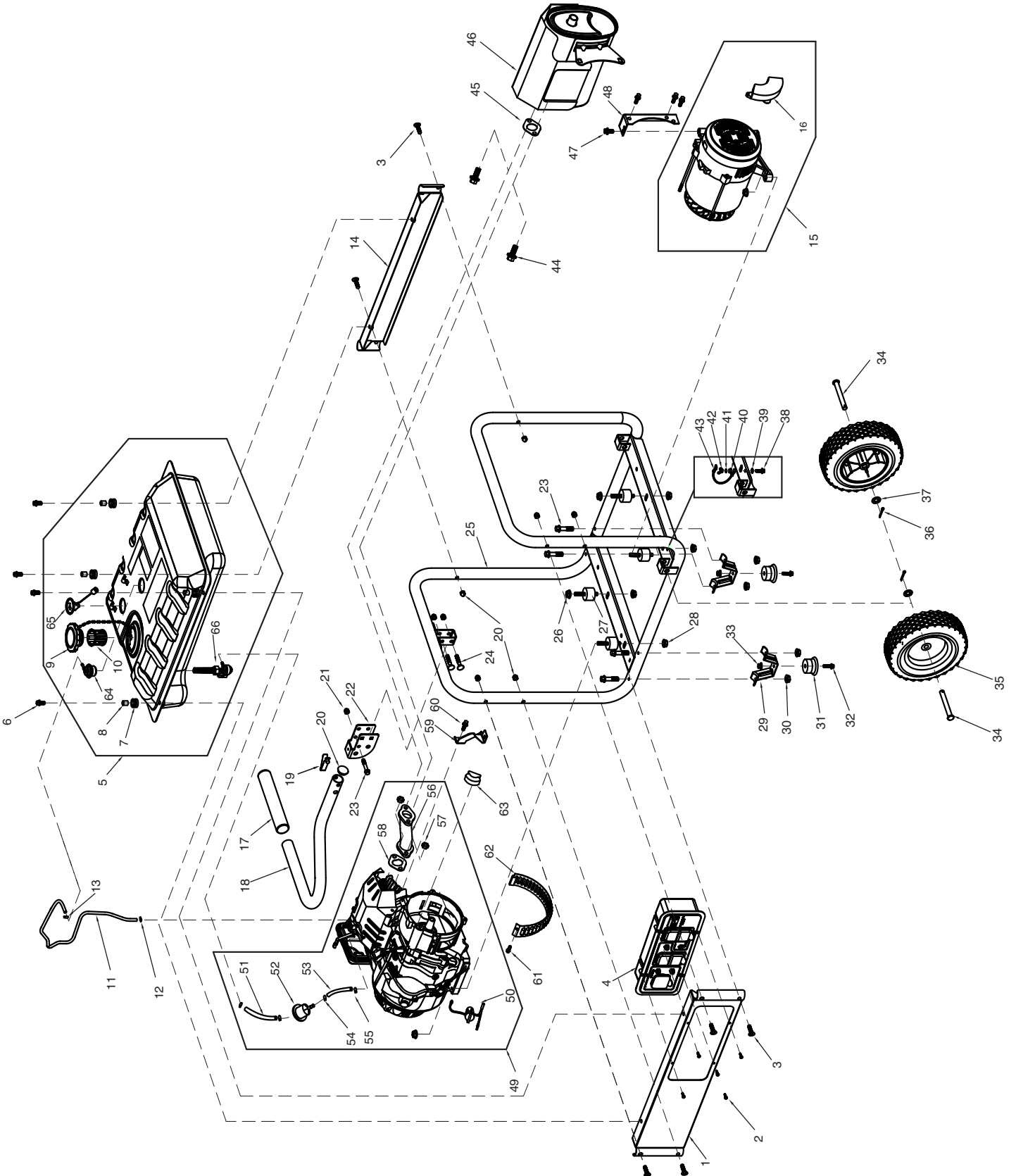


Parts Manual

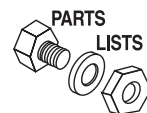
GP5500kW 389CC (Model 0061103)

NOTICE!

The information in this manual is known to be accurate as of the date of release shown on the cover. However, engineering changes can occur without notice. To obtain the proper parts, please be sure to use the serial number of the unit being serviced when ordering from this manual. Always refer to any parts notes and changes before ordering. All other parts not shown in this manual can be found on Generac's exploded view drawings online on GENservice at www.generac.com.



GP5500



| Item | Part # | Qty | Description |
|------|-------------|-----|--------------------------------|
| 1 | 0H97480ST03 | 1 | FRAME RAIL PAINT: BLACK |
| 2 | 0G8382 | 8 | SCREW PPPH #8-16 X .66" BZC |
| 3 | 0H1780 | 6 | CURVED HEAD M8-1.25 X 41MM LNG |
| 4 | 0H9775D | 1 | CONTROL PANEL ASSY. |
| 5 | 0H7510A0SRV | 1 | FUEL TANK ASSY. 7 GAL |
| 6 | 0E9507C | 4 | SCREW HHFC M8-1.25 X 20 W/M10 |
| 7 | 0H1411B | 4 | RUBBER MOUNT,10.3 ID X 11 HGT |
| 8 | 0H1610A | 4 | ANTI-CRUSH 10.8OD 9ID 10LG |
| 9 | 0H0958 | 1 | FUEL CAP |
| 10 | 0H1326 | 1 | FUEL FILTER |
| 11 | 0K0091 | 1 | HOSE FORMED ROV-AIRBOX GP EPA |
| 12 | 0J35220173 | 1 | CLAMP,Ø12 |
| 13 | 0J35220174 | 1 | CLAMP,Ø10 |
| 14 | 0H9749AST03 | 1 | BACK RAIL PAINT: BLACK |
| 15 | 0J8363 | 1 | ALTERNATOR ASSY. 5.5kW |
| 16 | 0H2579B | 1 | AVR |
| 17 | 0G8442C113 | 1 | HANDLE GRIP |
| 18 | 0H97560ST15 | 1 | HANDLE |
| 19 | 0G5442 | 1 | SNAP BUTTON - .437" DIA. HEAD |
| 20 | 0H9760 | 1 | PLUG |
| 21 | 0H1782 | 9 | CAP NUT LOCKING M8 |
| 22 | 0H97670ST15 | 1 | BRACKET |
| 23 | 0B1214 | 5 | BOLT M8X45 |
| 24 | 0H1781 | 2 | CARRIAGE HEAD BOLT M8X46 |
| 25 | 0H97620ST15 | 1 | ASSEMBLY FRAME GP5-6.5KW PS |
| 26 | 0G84420107 | 4 | NUT M10 |
| 27 | 0H1783 | 4 | VIB MOUNT RUBBER |
| 28 | 067989 | 4 | NUT M8 |
| 29 | 0K0097 | 2 | FRAME, BENT FOOT |
| 30 | 0K0098 | 4 | NUT M8 |
| 31 | 0K0099 | 2 | RUBBER FOOT |

| Item | Part # | Qty | Description |
|------|------------|-----|---------------------------|
| 32 | 0K0100 | 2 | BOLT M6X28 |
| 33 | 0K0105 | 2 | NUT M6 |
| 34 | 0H0204 | 2 | AXLE PIN |
| 35 | 0K6011 | 2 | WHEEL COMP |
| 36 | 0D4999 | 2 | COTTER PIN |
| 37 | 022304 | 2 | WASHER FLAT Ø13X2 |
| 38 | 0J35220156 | 1 | BOLT M6X20 |
| 39 | 0K0093 | 1 | WASHER LOCK SPECIAL |
| 40 | 0G84420272 | 1 | NUT M6 |
| 41 | 0J47870118 | 1 | WASHER FLAT Ø6X0.8 |
| 42 | 0K0094 | 1 | NUT M6 |
| 43 | 0K0092 | 1 | ASSY GND WIRE |
| 44 | 0E9507C | 2 | BOLT M8X25 |
| 45 | 0J4691 | 1 | GASKET, EXAUST, MUFFLER |
| 46 | 0J8672 | 1 | MUFFLER |
| 47 | 0E9470 | 4 | BOLT M8X16 |
| 48 | 0G8542 | 1 | BRACKET, MUFFLER |
| 49 | 0G8442C | 1 | ENGINE 390FA |
| 50 | 0G9911 | 1 | ENGINE SWITCH |
| 51 | 0G9757A | 1 | FUEL HOSE Ø8X55 |
| 52 | 0G9914 | 1 | FUEL FILTER |
| 53 | 0G9757B | 1 | FUEL HOSE Ø8X80 |
| 54 | 0G84420259 | 3 | CLAMP HOSE Ø8 |
| 55 | 0J00620118 | 1 | CLAMP HOSE Ø9.5 |
| 56 | 0J4535A | 1 | MANIFOLD EXHAUST GP5-7.5E |
| 57 | 0J35220161 | 2 | NUT M8 |
| 58 | 0G9028 | 1 | GASKET, EXAUST,CYLINDER |
| 59 | 0G8442C112 | 1 | BRACKET, AIR CLEANER |
| 60 | 0G84420194 | 3 | BOLT M6X12 |
| 61 | 0J00620100 | 1 | BOLT M5X10 |
| 62 | 0H9761 | 1 | COVER, DUST |
| 63 | 0J86620104 | 1 | PLATE, GAURD |
| 64 | 0J7921 | 1 | ROV |
| 65 | 0H9005 | 1 | FUEL GAUGE 130LG |
| 66 | 0J0974 | 1 | VALVE FUEL SHUTOFF |

©2014 Generac Power Systems, Inc. All rights reserved.
Specifications are subject to change without notice
No reproduction allowed in any form without prior written consent from Generac Power Systems, Inc.