

EXPLODED VIEW: 100A 3R SERVICE ENTRANCE

DRAWING #: 0G6207A

GROUP C

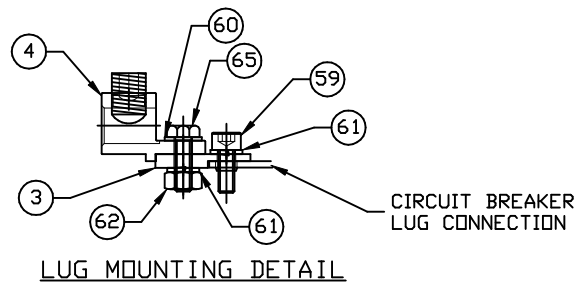
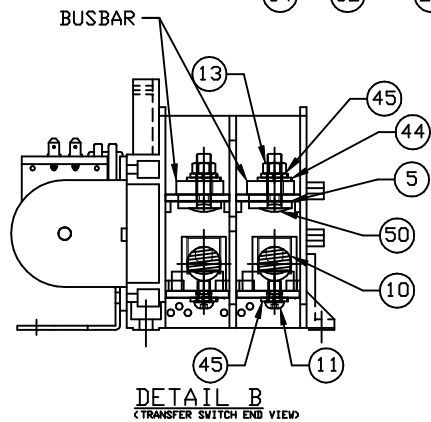
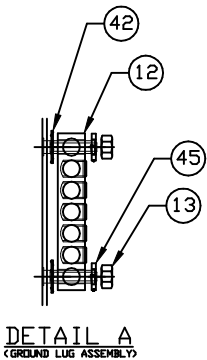
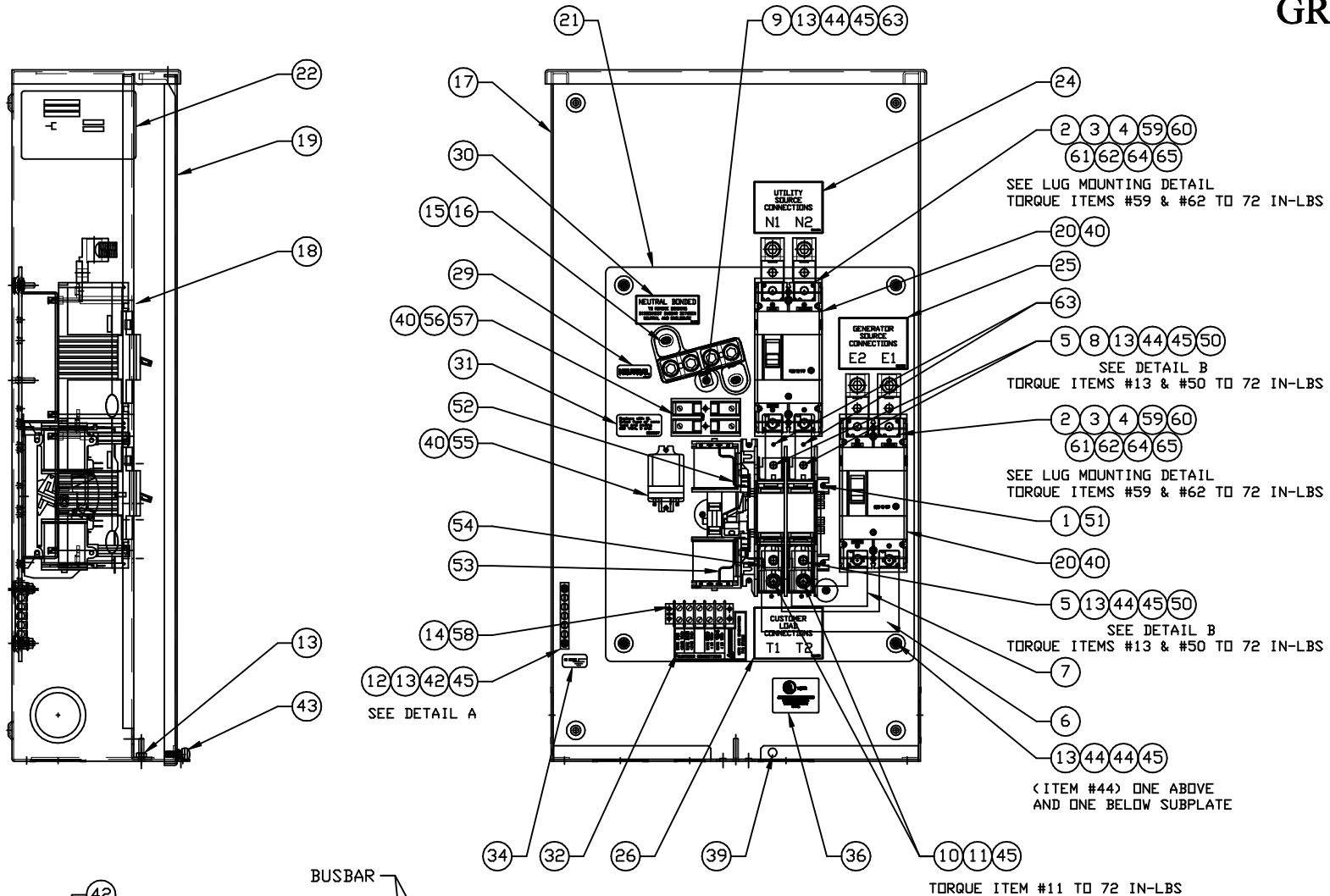
APPLICABLE TO:

ITEM	PART #	QTY.	DESCRIPTION
1	0C2237	1	TR SW-HSB 100A 2P 250V
2	074908	8	SCREW HHTT M5-0.8 X 10 BP
3	0G2000	6	LUG SLDLSS 1/0-#14X9/16 AL/CU
4	036933	6	SCREW, PPHMS 10-32 X 3/8"
5	022152	6	WASHER, LOCK # 10
6	0E7886H	2	CB 100A 2P BACK MNT SIEMENS
7	0E7890	2	C/BKR MOUNTING BRACKET
8	0A1495	12	SCREW HHTT M4-0.7 X 10 BP
9	0G6025	1	WIRING HARNESS HSB (NOT SHOWN)
(3) 10	063617	1	RELAY PNL 12VDC DPDT
(3) 11	0D2806	1	FUSEBLOCK 30A 600V 2 POLE
12	073590A	2	FUSE 5A X BUSS HLDR73591
(3) 13	048850	1	BLOCK, TERM 20A 5 X 6
14	0A1661	2	RIVET, POP .156 X .67
15	0E3717	1	ASSY-NEUT BLK 100A W/TAP
16	090388	2	SCREW HHTT M6-1.0 X 12 MM
17	0G51590AL08	1	ENCLOSURE, 100/200A TRANSFER SWITCH
18	0G55940AL08	1	COVER, INSIDE TRANSFER SWITCH ENCL
19	0G51740AL08	1	COVER, TRANSFER SWITCH
20	0G55920AL08	1	SUBPLATE, 100/200A XFER SW
21	0G55930AL08	2	RISER, 100A SERVICE ENTRANCE
22	0G0242	1	DECAL, FRNT CVR ATS 3R SER DIS
23	0G5910C	REF.	DECAL, XFER SW SE 100A 120/240
24	0E3484	1	DECAL, MANUAL OPERATING HANDLE
25	0F9969	1	DECAL, UTILITY DISCONNECT
26	0F9970	1	DECAL, GENERATOR DISCONNECT
27	067210A	1	DECAL, GROUNDING LUG
28	0A9457	1	DECAL, NEUTRAL
29	0D3587	1	DECAL, FUSE REPLACEMENT
30	0C2262	1	DECAL, TERMINAL STRIP
31	0F0776	1	DECAL, TEST SEQUENCE
32	0G0900	1	DECAL, UL LIST HSB
33	0G3259	1	DECAL, TERMINAL SHOCK HZD BI
34	0G3274	1	DECAL, LIVE CIRCUIT ENG/FRN/SPN
35	0G4220	1	DECAL, NEUTRAL CONNECTION
36	0E6523	1	GROUND BAR (5) 4-14 AWG CONN
37	0C6748	2	NUT HEX LOCK M4-0.7 SS NYL INS
38	026579	2	WASHER SHAKEPROOF EXT #8 STEEL
39	043180	2	WASHER FLAT M4
40	085889	6	NUT HEX 1/4-20 SS
41	022473	8	WASHER FLAT 1/4-M6 ZINC
42	022097	5	WASHER LOCK M6-1/4
43	0E6193	1	BRACKET, ARM EXTENDER
44	0D6162	2	RIVET POP .156 X .362 AL
(2) 45	0E6155	1	ARM EXTENDER PIN
46	0G5780A	1	WIRE ASM, 2AWG 100A 2-P T/S N1A
47	0G5780B	1	WIRE ASM, 2AWG 100A 2-P T/S N2A
48	0G5780C	1	WIRE ASM, 2AWG 100A 2-P T/S E1A
49	0G5780D	1	WIRE ASM, 2AWG 100A 2-P T/S E2A
50	0E6303	2	WIRE-A
52	0E6303C	1	WIRE-E1
53	058000E	1	NUT TRIC 1/4-20 X .525
54	0C3992	1	SCREW HHTT M4-0.7 X 16 BP
55	0G6417	1	BUSBAR, NEUTRAL BLOCK
56	0G7226	1	5/16" BRASS SPACER
57	0E7213	1	THUMB SCREW 1/4-20x1/2

(2) SUPPLIED WITH TRANSFER SWITCH ITEM #1

(3) SUPPLIED WITH WIRE HARNESS ITEM #9

GROUP C



APPLICABLE TO:

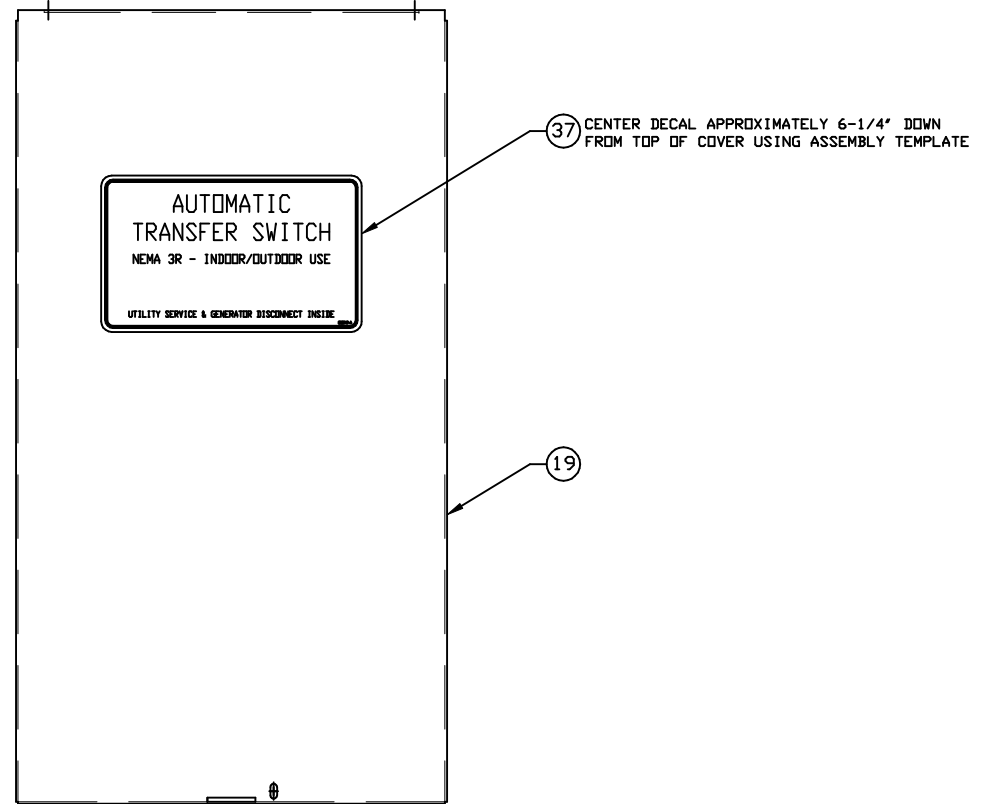
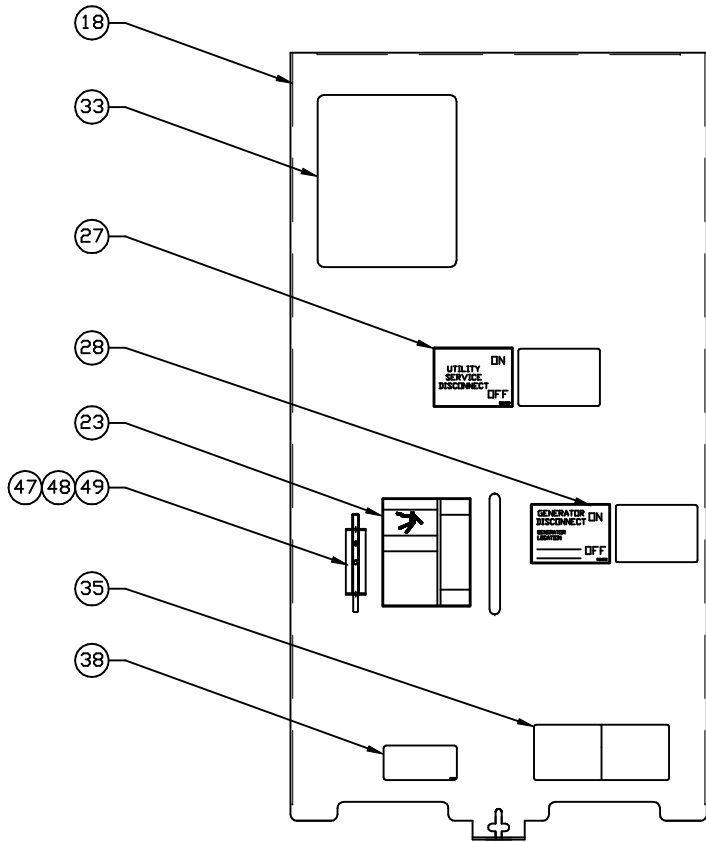
ITEM	PART #	QTY.	DESCRIPTION
1	0D9618	1	TRANSFER SW. HSB 200A 2P 250V
2	0G4478	2	CIRCUIT BREAKER, 200A 2-POLE
3	0F8843	4	BUSBAR, 200A LUG ADAPTER
4	0F8451	4	LUG 300 MCM-6STR
5	0G4413	4	SPACER 200 AMP TRANSFER
6	0G6350	1	BUSBAR, 200A TRANSFER SW E1
7	0G6351	1	BUSBAR, 200A TRANSFER SW E2
8	0G6352	2	BUSBAR, 200A TRANSFER SW N1,N2
9	0G6417	1	BUSBAR, NEUTRAL BLOCK
10	0E3375	2	LUG SOLDERLESS 250-#6 AL/CU
11	0F1252	2	SCREW BHSC 1/4-20 X 3/8
12	0G6320	1	GROUND BAR (5) 2-14 AWG CONN
13	085889	12	NUT HEX 1/4-20 SS
14	0A1661	2	RIVET, POP .156 X .67
15	0E3717A	1	ASSY-NEUT BLK 200-400A WTAP
16	090388	2	SCREW HHTT M6-1.0 X 12 MM
17	0G63430AL08	1	ENCLOSURE, 200A SE XFER SW
18	0G63460AL08	1	COVER, INSIDE 200A DUAL BREAKER
19	0G63440AL08	1	COVER, TRANSFER SWITCH
20	0G44200AL08	2	RISER, CIRCUIT BREAKER
21	0G63450AL08	1	SUBPLATE, 200A SE XFER SW
22	0G5910B	REF.	DECAL, TRANSFER SWITCH DATA
23	0E3484	1	DECAL, MANUAL OPERATING HANDLE
24	0G6413A	1	DECAL, UTILITY SOURCE CONN
25	0G6413B	1	DECAL, GENERATOR SOURCE CONN
26	0G6413C	1	DECAL, CUSTOMER LOAD CONN
27	0G6413D	1	DECAL, UTILITY DISCONNECT
28	0G6413E	1	DECAL, GENERATOR DISCONNECT
29	0A9457	1	DECAL, NEUTRAL
30	0G4220	1	DECAL, NEUTRAL CONNECTION
31	0D3587	1	DECAL, FUSE REPLACEMENT
32	0C2262	1	DECAL, TERMINAL STRIP
33	0G4591	1	DECAL, TEST SEQUENCE
34	067210A	1	DECAL, GROUNDING LUG
35	0G3259	1	DECAL, TERMINAL SHOCK HZD BI
36	0G0900	1	DECAL, UL LIST HSB
37	0G0242	1	DECAL, FRNT CVR ATS 3R SER DIS
38	0G3274	1	DECAL LIVE CIRCUIT ENG/FRN/SPN
39	058000E	1	NUT TRIC 1/4-20 X .525
40	0A1495	12	SCREW HHTT M4-0.7 X 10 BP
41	064761	4	TIE WRAP UL 5.6 X .10 (NOT SHOWN)
42	026850	2	WASHER SHAKEPROOF EXT 1/4 STL
43	0E7213	1	THUMB SCREW 1/4-20x1/2
44	022473	13	WASHER FLAT 1/4-M6 ZINC
45	022097	13	WASHER LOCK M6-1/4
46	0H2538	1	WIRING HARNESS HSB (NOT SHOWN)
47	0E6193	1	BRACKET, ARM EXTENDER
48	0D6162	2	RIVET POP .156 X .362 AL
(1) 49	0E6155	1	ARM EXTENDER PIN
50	024334	4	BOLT CARR 1/4-20 X 1"
51	074908	5	SCREW HHTT M5-0.8 X 10 BP
52	0E6303	2	WIRE-A
54	0E6303C	1	WIRE-E1
(2) 55	063617	1	RELAY PNL 12VDC DPDT
(2) 56	0D2806	1	FUSEBLOCK 30A 600V 2 POLE
57	073590A	2	FUSE 5A X BUSS HLDR73591
(2) 58	048850	1	BLOCK TERM 20A 5 X 6 X 1100V
59	049897	8	SCREW SHC M8-1.25 X 20 G8
60	022145	8	WASHER FLAT 5/16-M8 ZINC
61	022129	12	WASHER LOCK M8-5/16
62	045771	4	NUT HEX M8-1.25 G8 CLEAR ZINC
63	026902	4	SCREW HHTT #8-32 X 1/4 CZ
64	053640	4	SCREW RHM #8-32 X 3-1/4
65	043107	4	SCREW HHC M8-1.25 X 25 C8.8

(1) SUPPLIED WITH TRANSFER SWITCH ITEM #1

(2) SUPPLIED WITH HARNESS ITEM #46

DECAL DETAILS

VIEWS SHOWN WITH ITEMS #18 & #19 FULLY ASSEMBLED



APPLICABLE TO:

THIS PAGE IS LEFT INTENTIONALLY BLANK